

BUILD THE MILL



INTERNATIONAL ASSOCIATION
OF OPERATIVE MILLERS



BUILD THE MILL



In order to guarantee maximum functionality, investment cost optimization and management efficiency of a mill installation some elements are fundamental...



BUILD THE MILL

Technological
Design

Project
Design

Technology
and
innovation

Installation



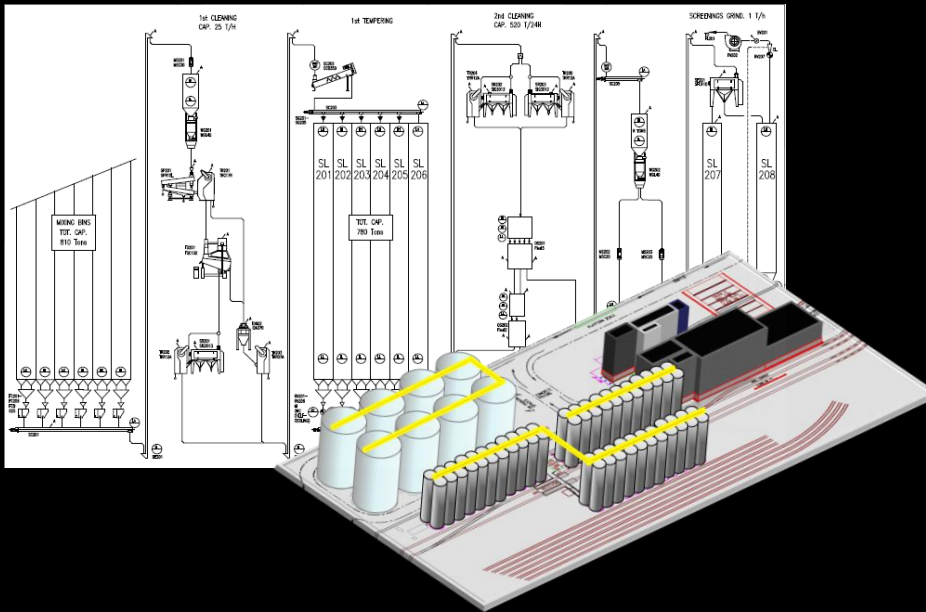
BUILD THE MILL

Technological
Design

Project
Design

Technology
and
innovation

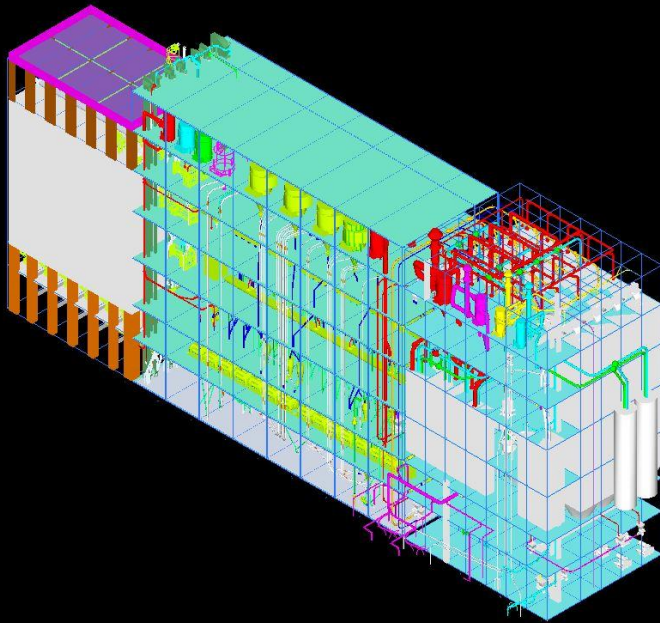
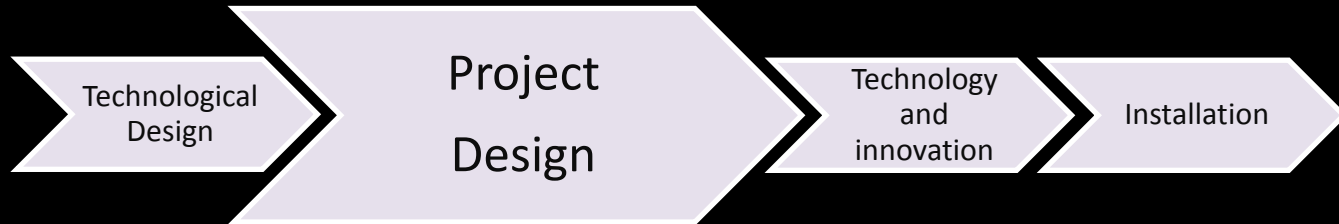
Installation



Flow sheet drawings
tailor to customers and
markets requirements



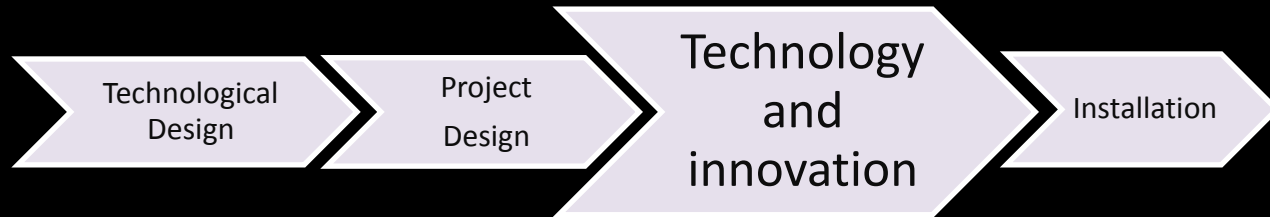
BUILD THE MILL



Functional project with
support of 3D design



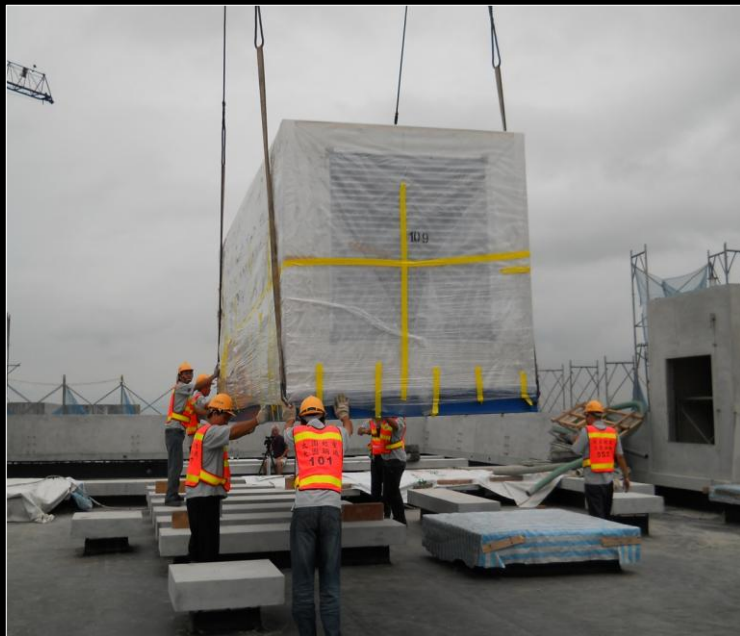
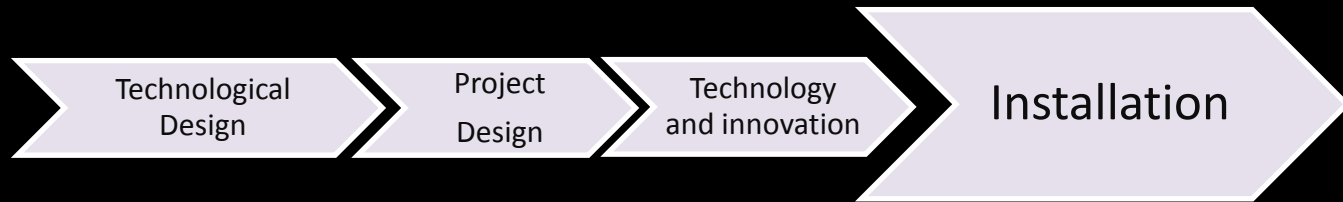
BUILD THE MILL



Latest technology and qualitative manufacturing process
& use of innovative materials/ solutions



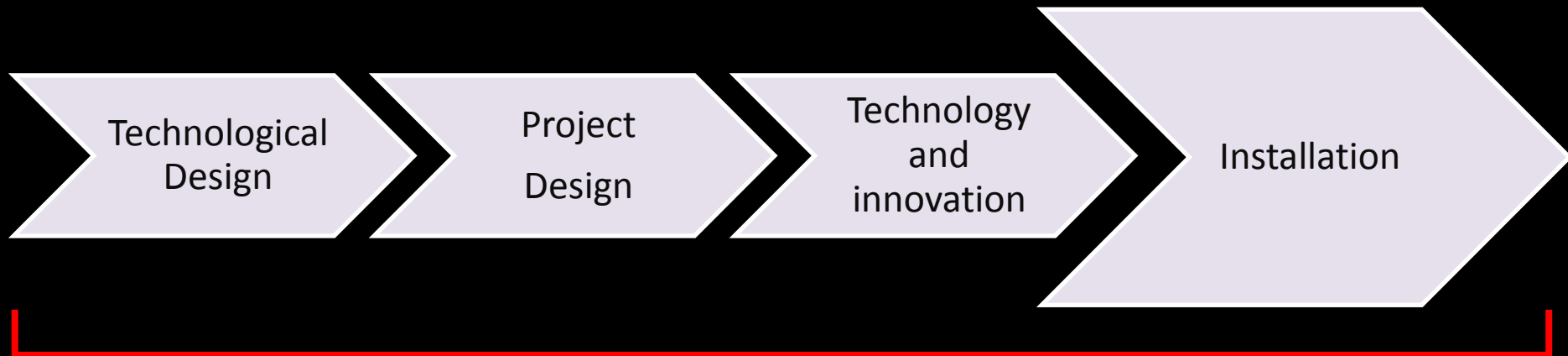
BUILD THE MILL



Awareness in building
installation



BUILD THE MILL



OCRIM'S ESTABLISHED
KNOW-HOW



OCRIM, with its well-known experience and maturity in the milling sector, has developed

BUILD THE MILL



A software created to optimize building times from planning up to building site assembly management.



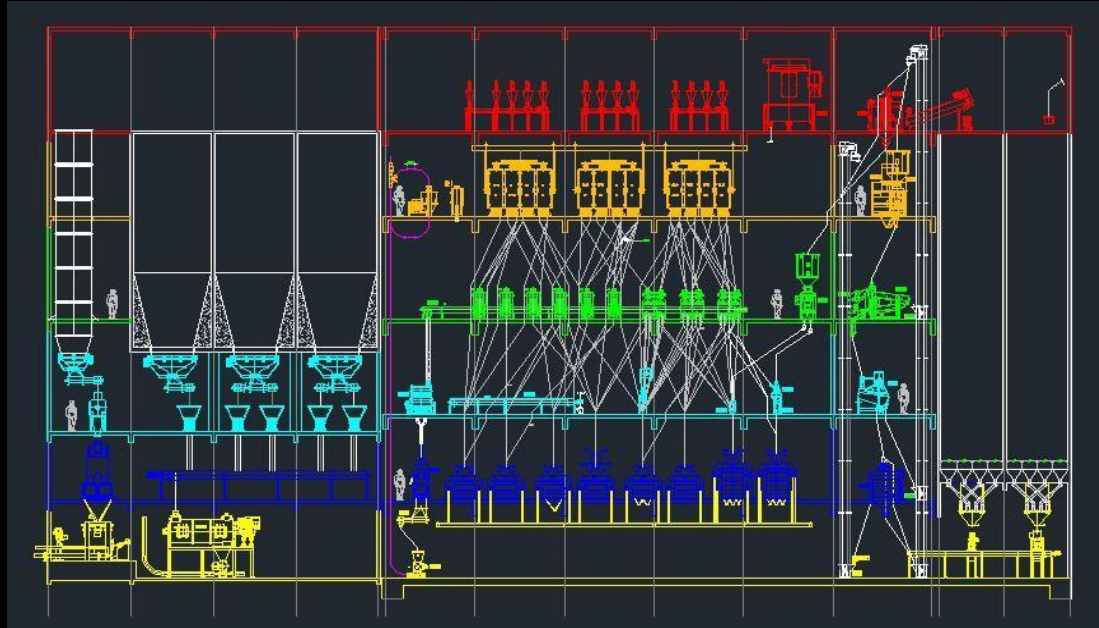
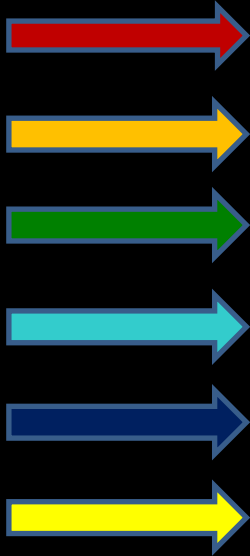
BUILD THE MILL



HOW DOES IT WORK?



BUILD THE MILL



During design, every single level of the mill & single machine contained will be assigned with a specific colour for identification purposes



BUILD THE MILL



Before shipping departure, every single package delivered is assigned considering the colour previously assigned



BUILD THE MILL



Single machinery will be also identified with barcode number



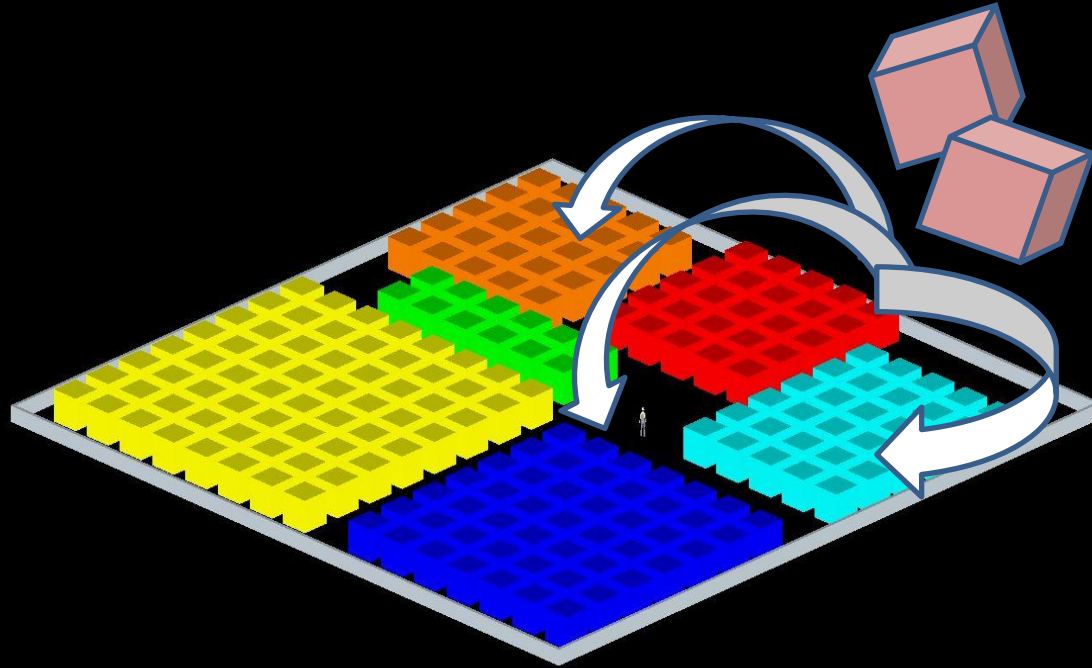
BUILD THE MILL



Single components are identified by specific barcode number



BUILD THE MILL

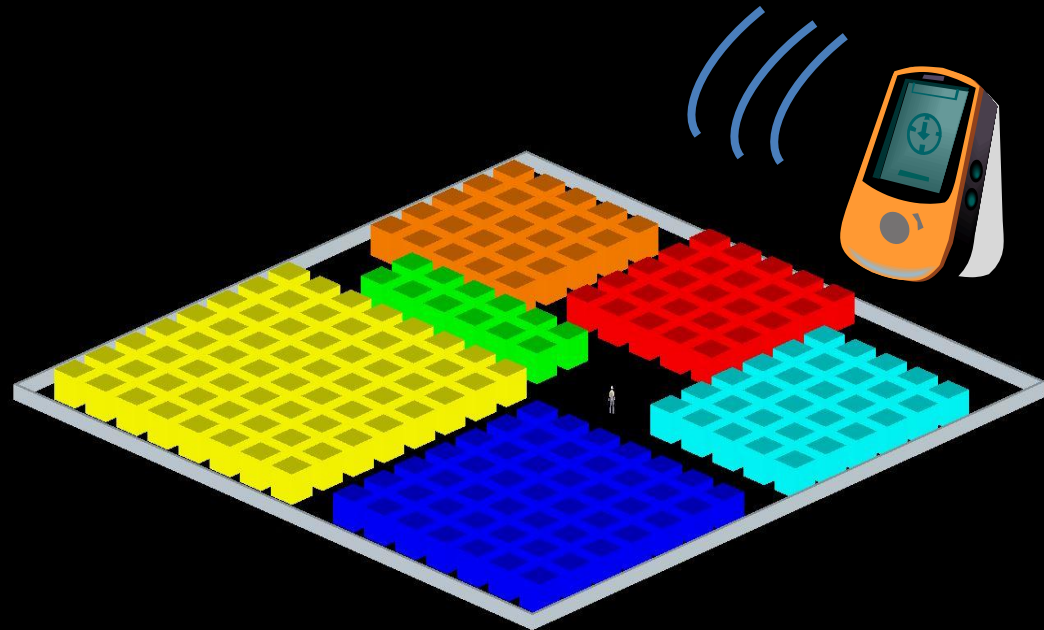


At the arrival to building site, packaging boxes can be classified based on the colour previously assigned



BUILD THE MILL

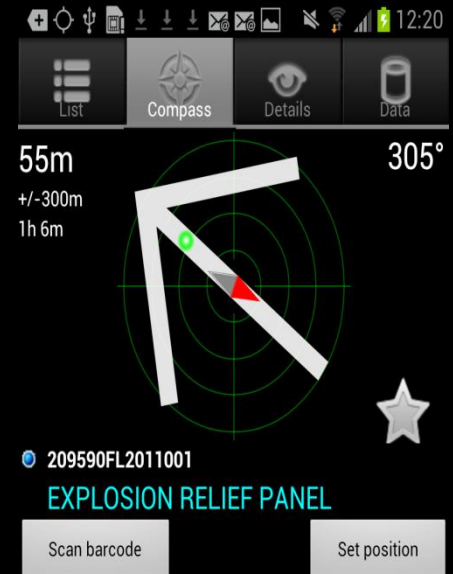
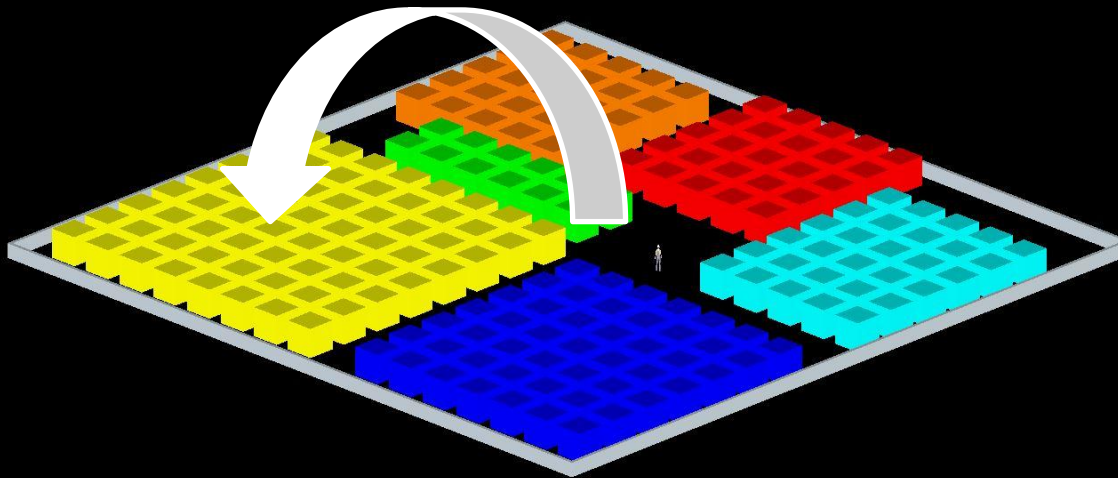
		
gps	300m	1h 2m
8923VN145	PIPE CLAMP D=50-145	51m >
200096100294	COLLO1	54m v
X2270209590	UPPER PART FOR FILTER TYPE FK/A	54m v
209590FL2011001	EXPLOSION RELIEF PANEL	54m v
200096100293	COLLO2	63m v
CORPOFKCA120	SBODY OF FILTER TYPE FK/A 120/25	63m v
91047077	SAFETY GRATE FOR SLEEVE	63m v
200096100292	COLLO3	63m v
X2271209590	FLAT BOTTOM SWEEPER	63m v
91045123	SUPPORT FOR SENSOR	63m v



GPS signals will help identify the exact location of single pieces or machines contained in boxes



BUILD THE MILL



GPS signals will help identify the exact location of single pieces or machines contained in boxes





BUILD THE MILL

Ocrim Plant Viewer: C:\OCRIM\sea-ced\BuildTheMill\Commesse\209200\dx\Diagrammi\CMF.01.001.dxf

File Options Info Help

Move reduced

Commissa:

209200

Search with barcode:

Items:

- Diagramma
- AV301
- AV302
- AV303
- AV304
- BE101
- BE201
- BE202
- BE203
- BE204
- BE205

View selected item

View:

Previous Next

Reset to: X-Y Y-Z X-Z

AV301

Piano di montaggio

CMF.02.003.04.dxf

Dettaglio accessori

Accessori Utenze

Descrizione	Qta	HL	Disegni A...
Cassonetto di carico	2		XH.0830
Supporto per indicatore di livello	2		XH.1365
Raccordo da AV a tubo Ø 120mm con bordo	2		XH.0837
Piastra annuncio AV	2		XH.0869

Livello: 1 67% 2 28% 3 11% 4 80% 5 100% 6 69%

60/69 5/18 3/27 9/13 10/10 40/58

Mostra accessorio

HDM

Sintesi

3D

Version 1.00.00 - Ocrim Plant Viewer (ced1@ocrim.com)



BUILD THE MILL

Ocrim Plant Viewer: C:\OCRIM\sea-ced\BuildTheMillCommesse\209200\dx\Diagrammi\CMF.01.001.dxf

File Options Info Help

Move reduced

Commissa:

209200

Search with barcode:

85126587422458

Items:

- Diagramma
- AV301
- AV302
- AV303
- AV304
- BE101
- BE201
- BE202
- BE203
- BE204
- BE205

View selected item

View:

Previous Next

Reset to: X-Y Y-Z X-Z

Diagram showing various components and connections, including a large yellow arrow pointing to a specific area.

Accessori Utente

Descrizione	Qta	HL	Disegni A...
Cassonetto di carico	2		XH.0830
Supporto per indicatore di livello	2		XH.1365
Raccordo da AV a tubo Ø 120mm con bordo	2		XH.0837
Piastra annuncio AV	2		XH.0869

Mostra accessorio

HDM

Sintesi

3D

Dettaglio accessori

Version 1.00.00 - Ocrim Plant Viewer (ced1@ocrim.com)



BUILD THE MILL

Ocrim Plant Viewer: C:\OCRIM\sea-ced\BuildTheMillCommesse\209540\dx\Piani di montaggio\CMF.02.001.01.dxf

File Options Info Help

Move reduced

Commissa: 209540

Search with barcode:

Items:

- BV302
- CS201
- DM201
- DS301
- DS302
- DS303
- DS304
- DS305

View selected item

Monta componente

View:

Previous Next

Reset to: X-Y Y-Z X-Z

Mostra accessorio

HDM

WARNING: There were 1 warning(s)!

Accessori Utente

Descrizione	Qta	HL	Disegni A...
Bocchetta uscita con presa d'aria (pass. C1/C2)	1		XH0631
Bocchetta uscita (pass. C3)	1		XH0627
Bocchetta uscita (pass. C4)	1		XH0624
Bocchetta uscita (pass. R1f/R2f)	1		XH0629

Livello: 1 1% 2 0% 3 0% 4 0% 5 0%

Dettagli accessori

DS301

Piano di montaggio

CMF.02.001.01.dxf



BUILD THE MILL

AV301
Piano di montaggio
CMF.02.003.04.dxf

Accessori Utenze

Descrizione	Qta	HL	Disegni A...
Cassonetto di carico	2		XH.0830
Supporto per indicatore di livello	2		XH.1365
Raccordo da AV a tubo Ø 120mm con bordo	2		XH.0837
Piastra annodino AV	2		XH.0869

Mostra accessorio Sintesi

HDM 3D

Dettaglio accessori

Livello: 1 0/7% 2 28% 3 11% 4 69% 5 100% 6 69%

60/69 5/18 3/27 9/13 10/10 40/58

Version 1.00.00 - Ocrim Plant Viewer (ced1@ocrim.com)

AV301
Piano di montaggio
CMF.02.003.04.dxf

Accessori Utenze

Descrizione	Qta	HL	Disegni A...
Cassonetto di carico	2		XH.0830
Supporto per indicatore di livello	2		XH.1365
Raccordo da AV a tubo Ø 120mm con bordo	2		XH.0837
Piastra annodino AV	2		XH.0869

Mostra accessorio Sintesi

HDM 3D

Dettaglio accessori

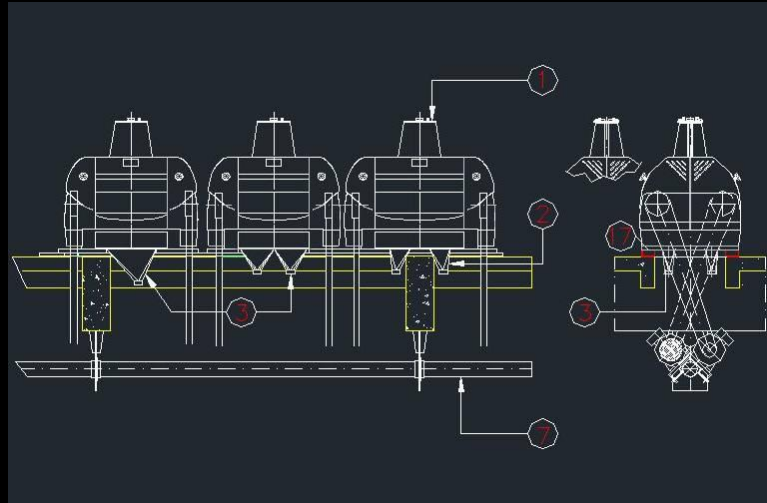
Livello: 1 0/7% 2 28% 3 11% 4 69% 5 100% 6 69%

60/69 5/18 3/27 9/13 10/10 40/58

Version 1.00.00 - Ocrim Plant Viewer (ced1@ocrim.com)



BUILD THE MILL



AV301
Piano di montaggio
CMF.02.003.04.dxf

Dettaglio accessori

Accessori Utenze

Descrizione	Qta	HL	Disegni A...
Cassonetto di carico	2		XH.0830
Supporto per indicatore di livello	2		XH.1365
Raccordo da AV a tubo Ø 120mm con bordo	2		XH.0837
Piastra annuncio AV	2		XH.0869

Mostra accessori Sintesi

HDM 3D

Livello: 1 67% 2 28% 3 11% 4 69% 5 100% 6 69%

60/69 5/18 3/27 9/13 10/10 40/58

Version 1.00.00 - Ocrim Plant Viewer (ced1@ocrim.com)



BUILD THE MILL

The screenshot displays the Ocrim Plant Viewer software interface. On the left, a tree view shows the project structure: AV301, Piano di montaggio, and CMF.02.003.04.dxf. The main area is divided into two tabs: 'Accessori' (selected) and 'Utenze'. The 'Accessori' tab contains a table with the following data:

Descrizione	Qta	HL	Disegni A...
Cassonetto di carico	2		XH.0830
Supporto per indicatore di livello	2		XH.1365
Raccordo da AV a tubo Ø 120mm con bordo	2		XH.0837
Piastra assorbitore AV	2		XH.0869

Below the table, a progress bar shows the completion status for six levels (Livello: 1 to 6). The progress is indicated by colored bars and percentages: Level 1 (yellow, 0%), Level 2 (blue, 28%), Level 3 (cyan, 11%), Level 4 (green, 69%), Level 5 (orange, 100%), and Level 6 (red, 69%). A yellow oval highlights the progress bar and the table below it. The bottom status bar shows 'Version 1.00.00 - Ocrim Plant Viewer (ced1@ocrim.com)'.



BUILD THE MILL

Specialized **OCRIM ASSISTANCE**
guaranteed during assembly phases & also
through real time Internet connection



BUILD THE MILL



Simplification of job pianification during installation

Functional storage of packages at arrival to building site

Speed research of material/components at building site

Time reduction of working schedules

Ease management of assembly

Autonomous assembly management by customer or supplier



BUILD THE MILL



Reduce installation and overall costs

Assurance in installation quality/ efficiency

Faster Investment pay-back due to reduction in installation time during course of the project which lead to a sooner production



THANK YOU!!!

