



# 2012/13 U.S. Wheat Situation Production & Market Highlights

23rd Annual IAOM MEA District Conference  
Abu Dhabi, United Arab Emirates ♦ 5 - 8 December 2012

**Dan Hughes**  
**Vice Chairman**  
**Venango, NE**



The world's most reliable choice.



# My farming operation.



U.S. WHEAT  
ASSOCIATES

The world's most reliable choice.



# Fall Seeding 2012



**U.S. WHEAT  
ASSOCIATES**

The world's most reliable choice.



# Summer Harvest 2013...(Hopefully)

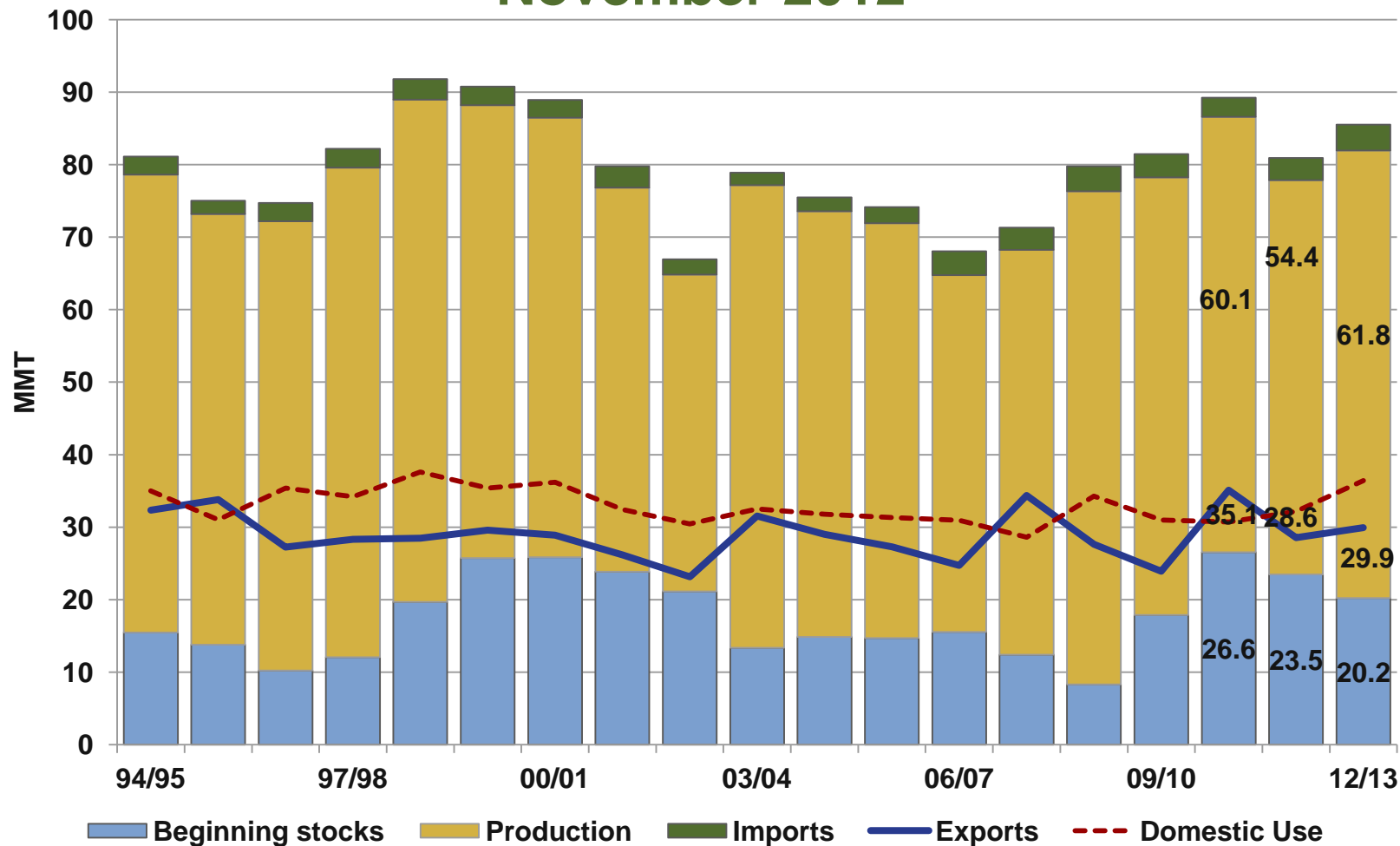


**U.S. WHEAT  
ASSOCIATES**

The world's most reliable choice.

# U.S. Wheat Supply & Demand

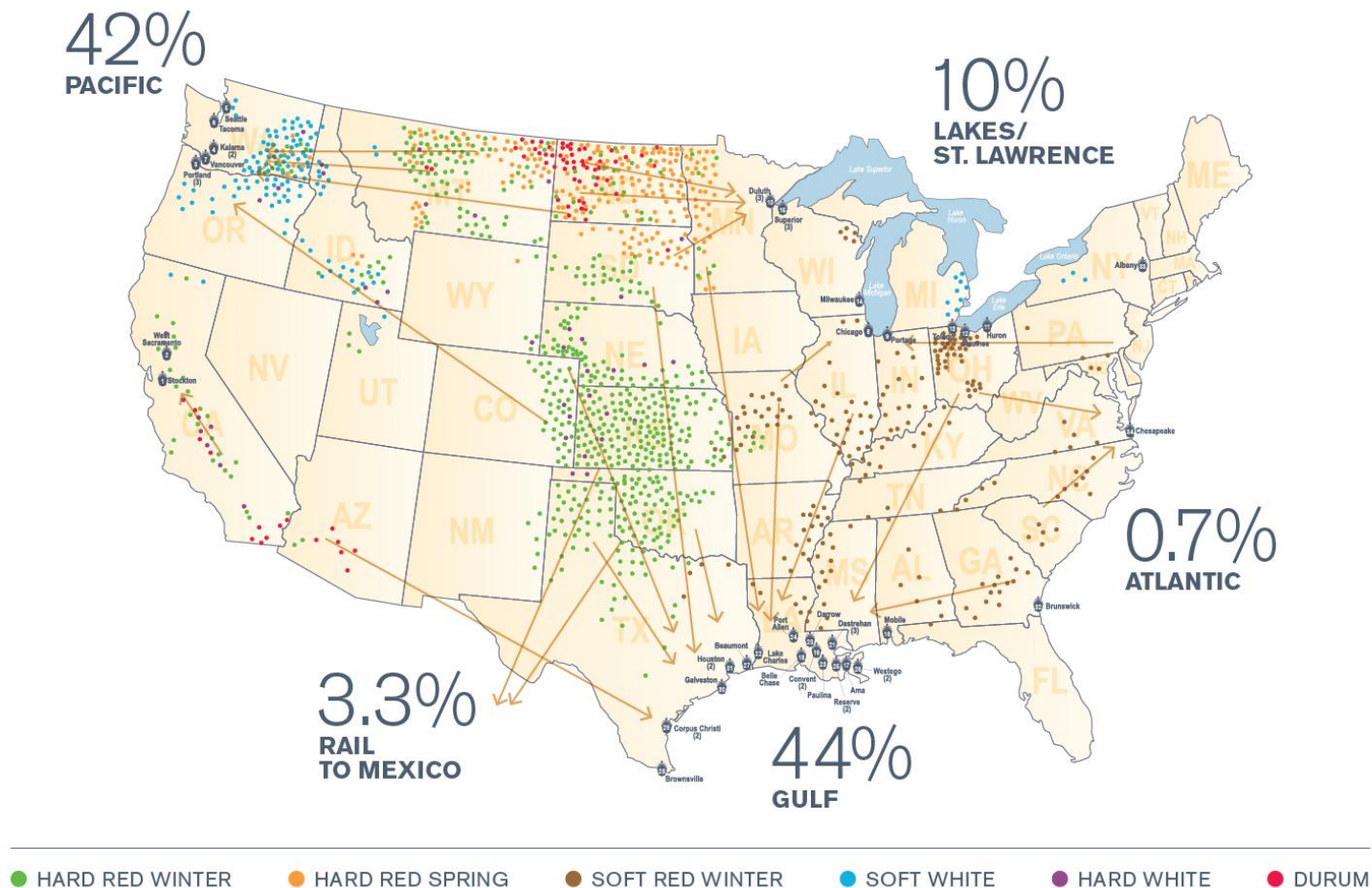
## November 2012



**U.S. WHEAT  
ASSOCIATES**

The world's most reliable choice.

# Six Classes; PNW, Gulf, Lakes, Atlantic



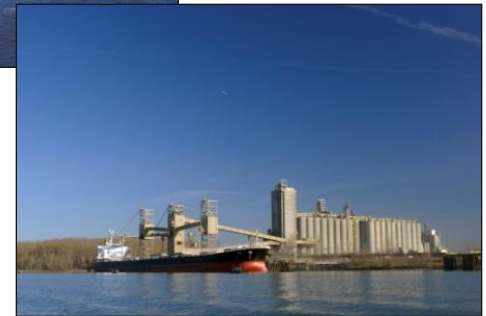
**U.S. WHEAT ASSOCIATES**

The world's most reliable choice.



# The U.S. Wheat Store is Always Open

- No export taxes or embargos
- Contract sanctity
- Market competition
- Transparent, assured pricing
- Assured quality

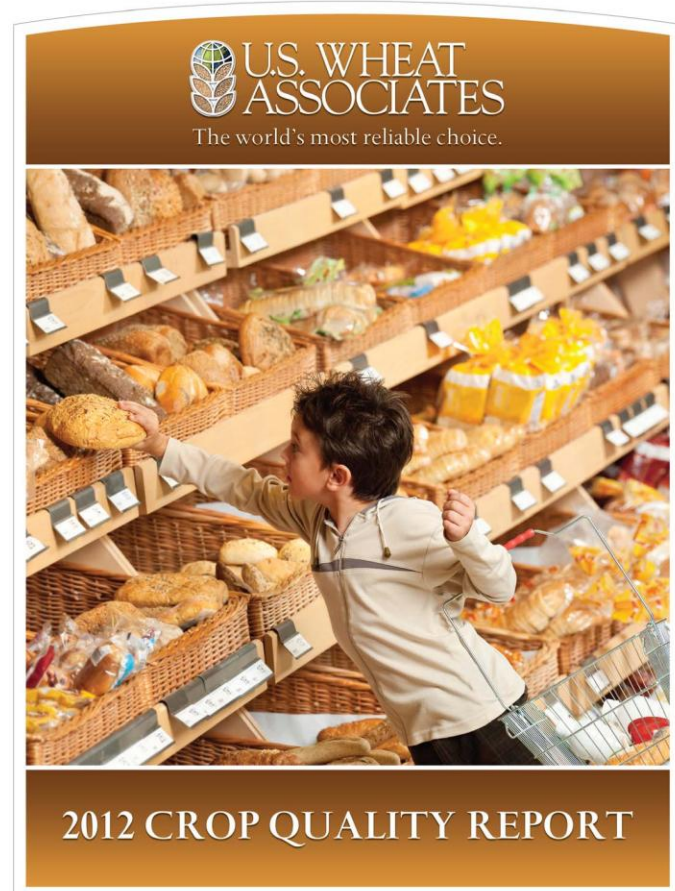


U.S. WHEAT  
ASSOCIATES

The world's most reliable choice.

# 2012 Comments — By Class

- 2012 Crop Quality Report and by class reports are posted at [www.uswheat.org](http://www.uswheat.org)





# Hard Red Winter Wheat

2012 Crop, Sample Averages as of 10/19/12

- Production:

27.3 MMT (Up 6.1 MMT)

- Crop Development:

Unusually warm conditions;  
timely rains with rapid maturity;  
high % # 1 Grade; protein  
performance will vary

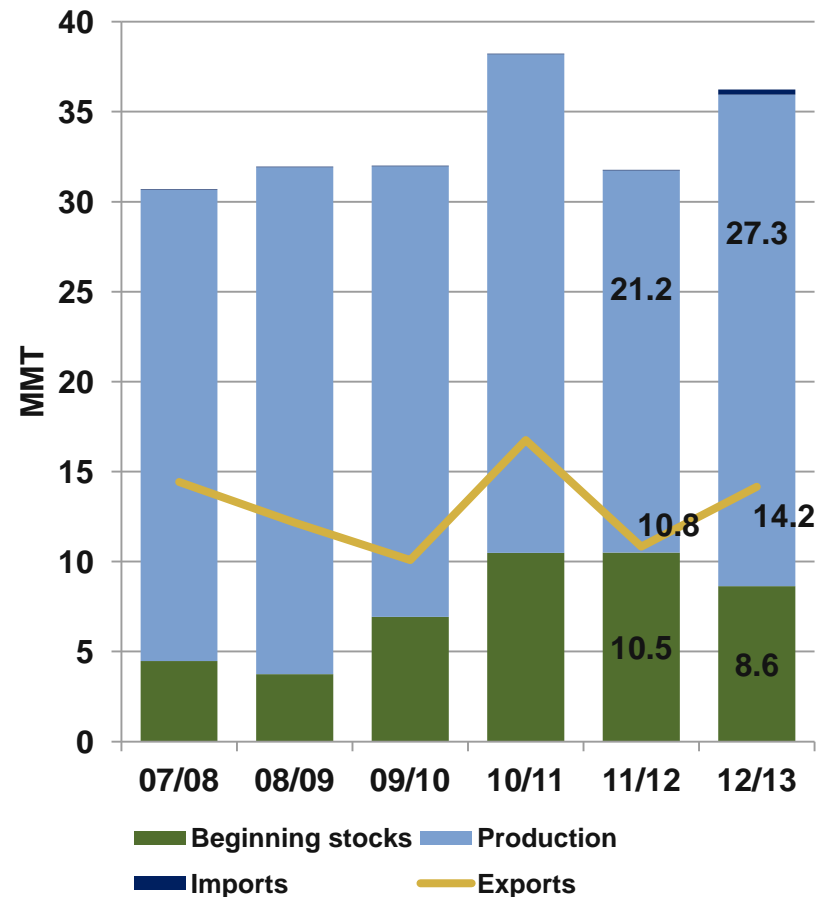
- Quality      2012 v. 5-Yr Avg:

Protein      12.6      (12.0)

TW (Kg/HI)      80.4      (79.5)

Humid.      10.7      (11.1)

Falling #      409      (415)



U.S. WHEAT  
ASSOCIATES

The world's most reliable choice.

# Hard Red Spring Wheat

2012 Crop, Sample Averages as of 10/19/12

- Production:

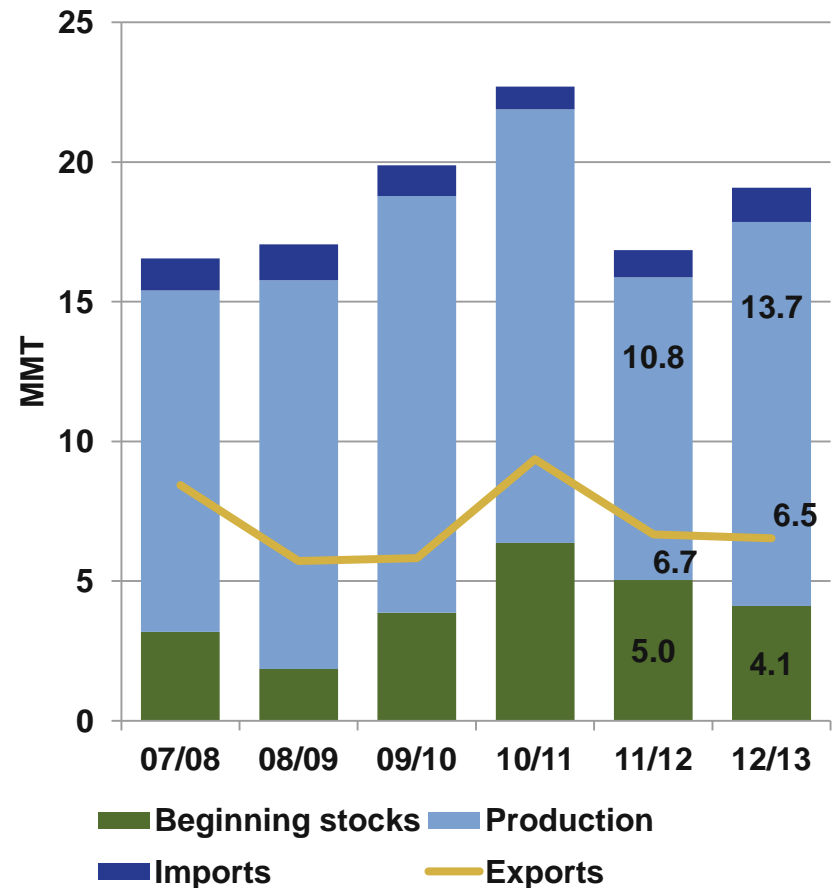
13.7 MMT (Up 2.9 MMT)

- Crop Development:

Mild, dry winter; early maturity;  
high protein, good balance in  
quality in #1 grade; value  
should be excellent

- Quality      2012 v    5-Yr Avg:

Protein	14.7	(14.1)
TW (Kg/HI)	80.6	(80.4)
Humid.	11.7	(12.2)
Falling #	418	(388)



U.S. WHEAT  
ASSOCIATES

The world's most reliable choice.



# Soft Red Winter Wheat

2012 Crop, Sample Averages as of 10/19/12

- Production:

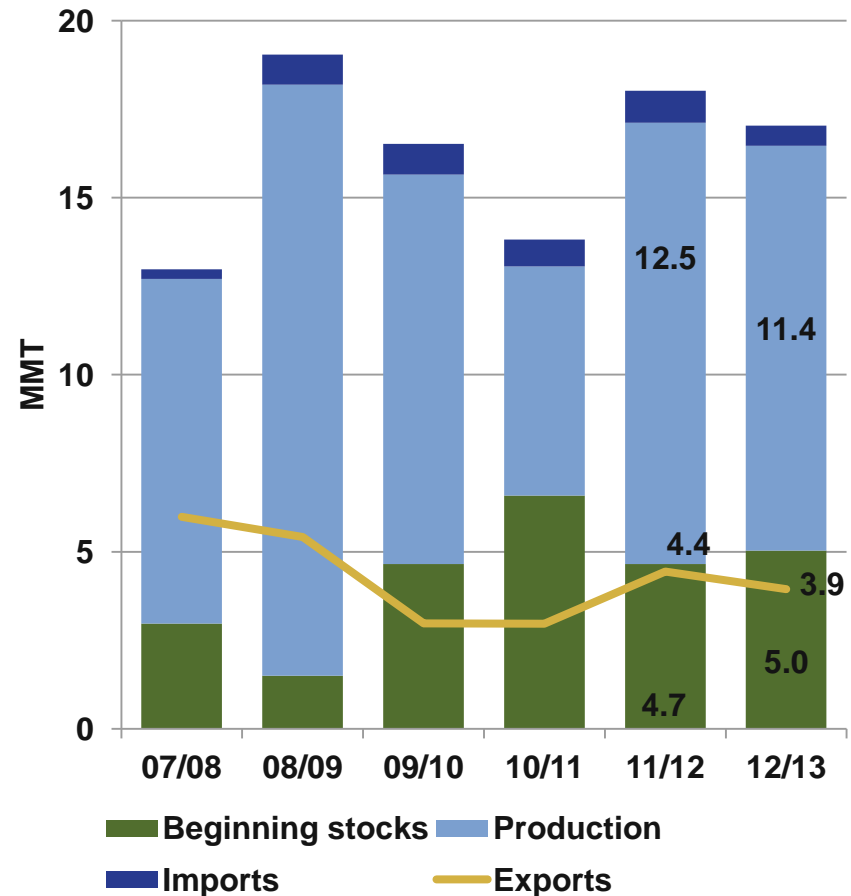
11.4 MMT (Down 1.1 MMT)

- Crop Development:

Wet fall cut Midwest planting; early maturity; a sound crop with low DON levels; quality performance a bit lower than average

- Quality      2012 v    5-Yr Avg:

Protein	9.9	(10.1)
TW (Kg/HI)	79.2	(77.2)
Humid.	12.7	(12.9)
Falling #	329	(331)



U.S. WHEAT  
ASSOCIATES

The world's most reliable choice.

# White Wheat (SW, Club, HW)

2012 Crop, Sample Averages as of 10/19/12

- Production:

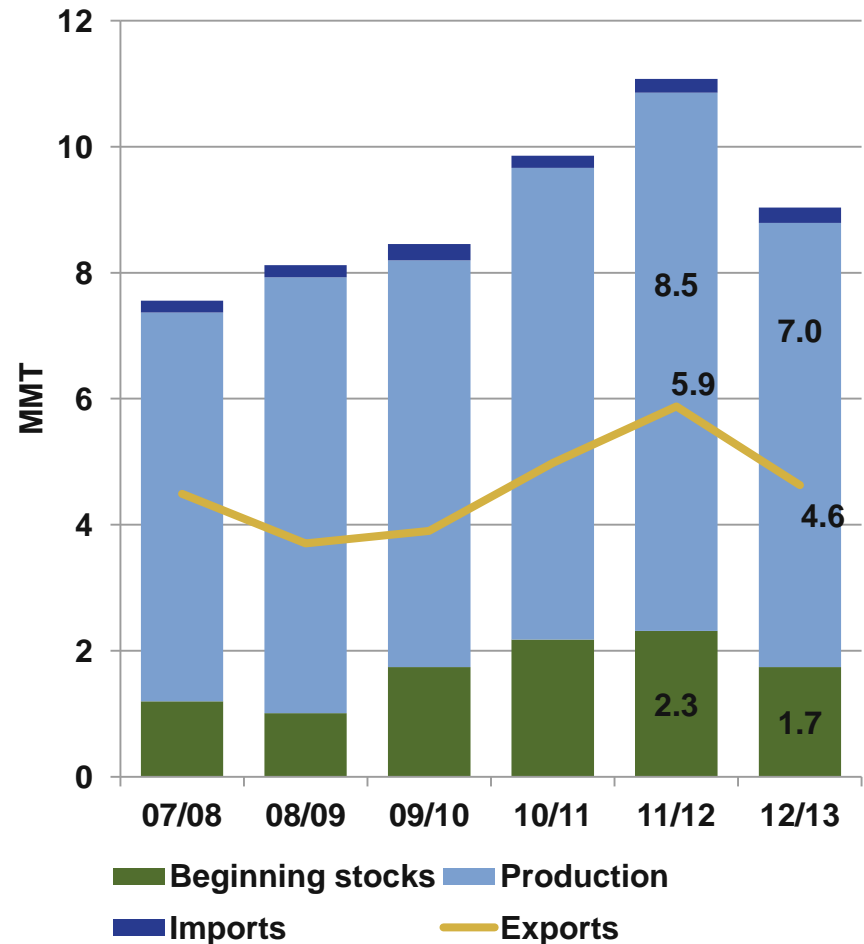
7.0 MMT (Down 1.5 MMT)

- Crop Development:

Cool with adequate moisture early, then hot and dry; a sound, #1 grade crop with milling and baking performance near average

- Quality      2012 v. 5-Yr Avg:

Protein	9.8	(10.1)
TW (Kg/HI)	80.2	(78.7)
Humid.	9.5	( 9.5)
Falling #	320	(324)



U.S. WHEAT  
ASSOCIATES

The world's most reliable choice.



# Durum Wheat

2012 Crop, Sample Averages as of 10/19/12

- Production:

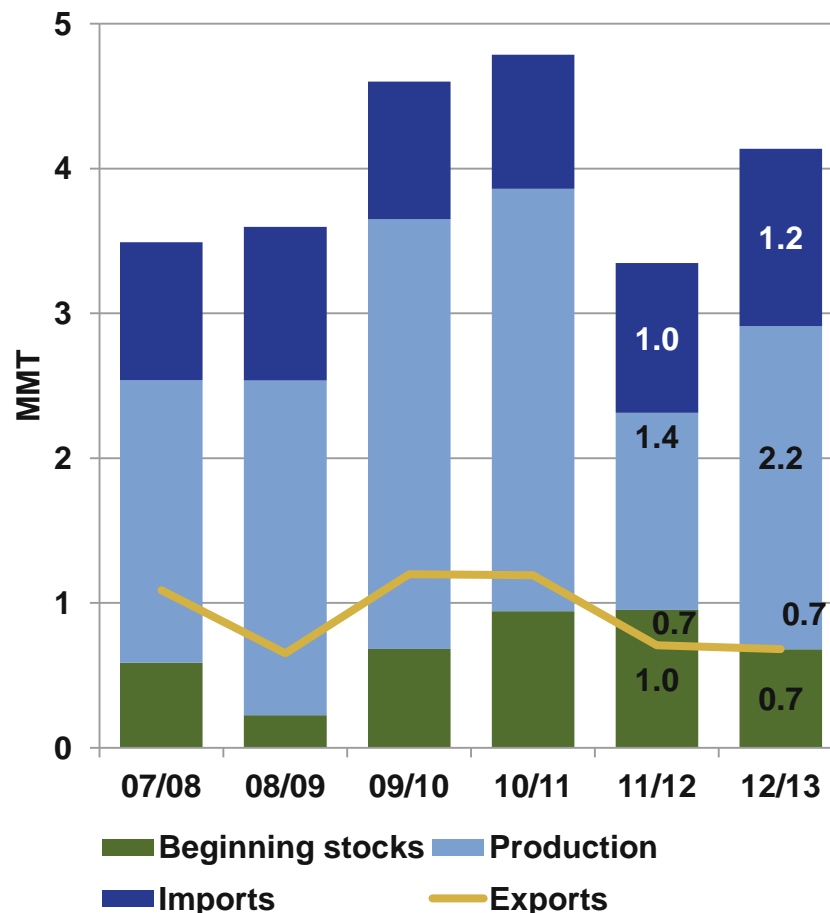
2.2 MMT (Up 1.2 MMT)

- Crop Development:

Early planting and maturity;  
good quality in a No. 1 grade  
crop; improved semolina,  
processing characteristics;  
some quality variability

- Quality      2012 v. 5-Yr Avg:

Protein	14.6	(14.1)
TW (Kg/HI)	78.9	(78.5)
Humid.	10.5	(11.7)
Falling #	412	(359)



U.S. WHEAT  
ASSOCIATES

The world's most reliable choice.

The background of the slide is a composite image. The top half shows a wide, panoramic view of rolling hills under a blue sky with light clouds. The hills are covered in golden-brown fields, likely wheat, with some small clusters of trees and buildings visible in the distance. The bottom half of the slide is a close-up, detailed view of a field of golden wheat stalks, showing the texture of the grain.

**Thank you for the opportunity to discuss some  
important issues.**

**We appreciate your business!**



The world's most reliable choice.



