



2011 U.S. Wheat Situation Production & Market Highlights

22nd Annual IAOM MEA District Conference

Dead Sea, Jordan ♦ 2 - 5 October, 2011

Randy Suess
Chairman



The world's most reliable choice.

My farming operation.



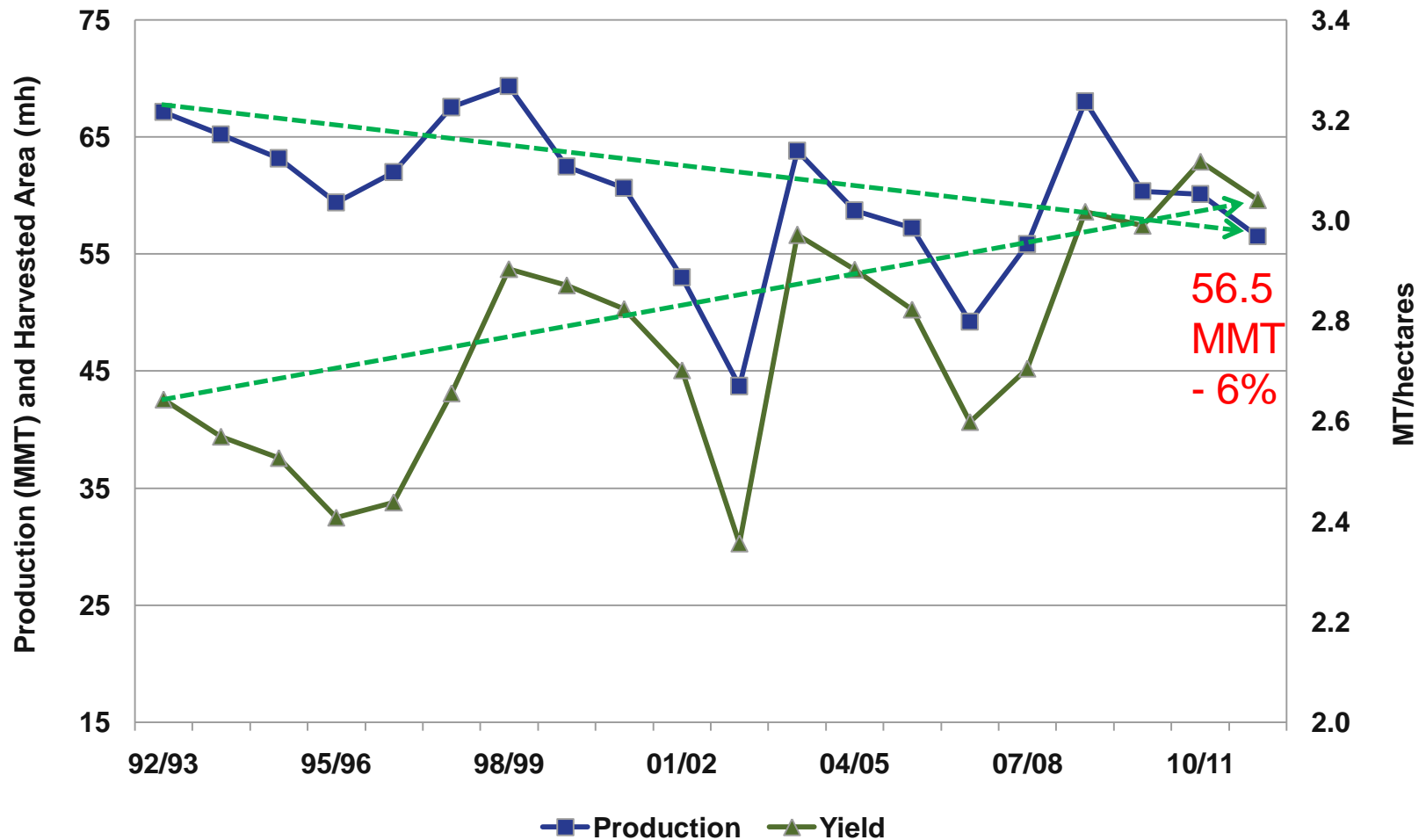








U.S. Wheat Production and Yield

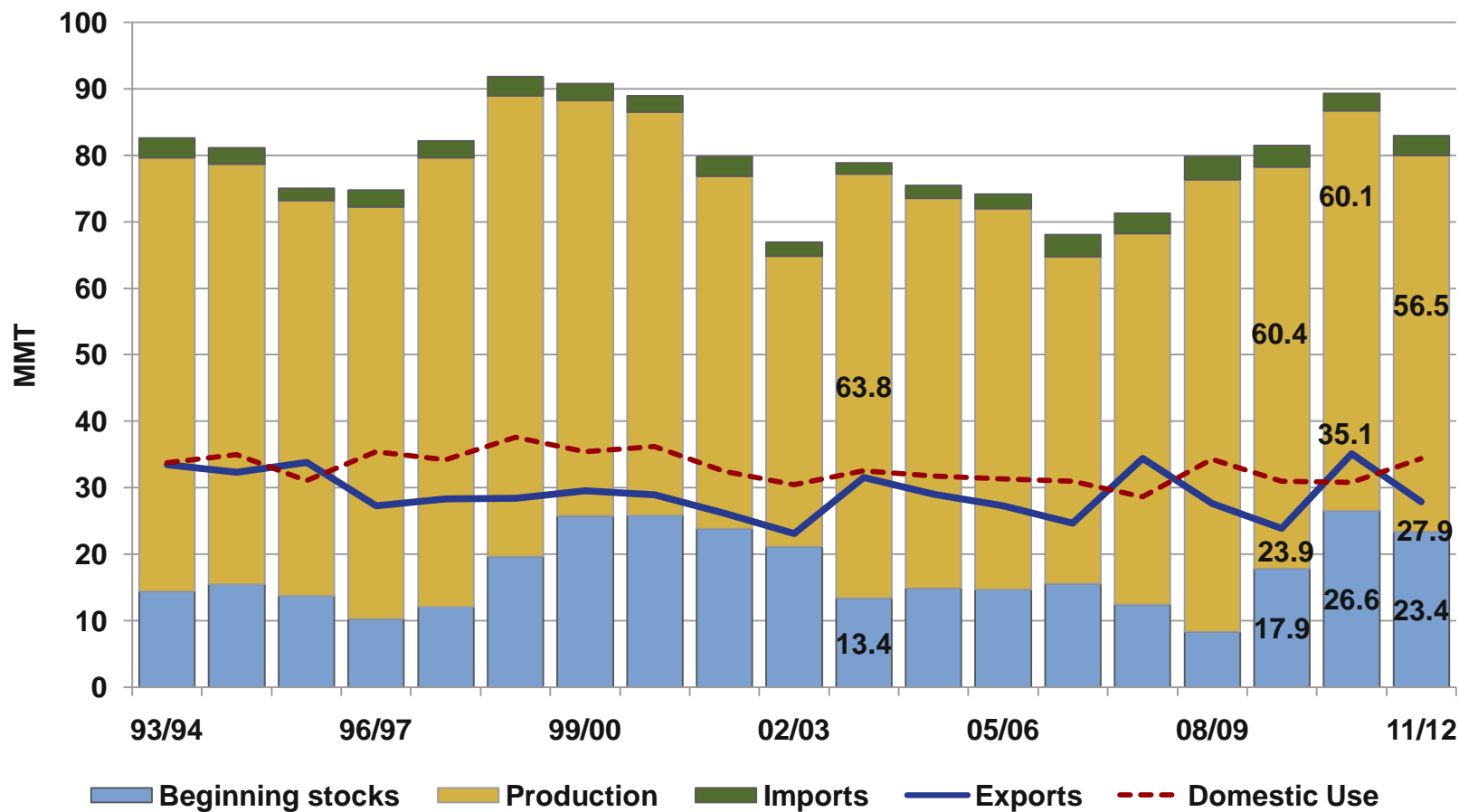


U.S. WHEAT
ASSOCIATES

The world's most reliable choice.

U.S. Wheat Supply & Demand

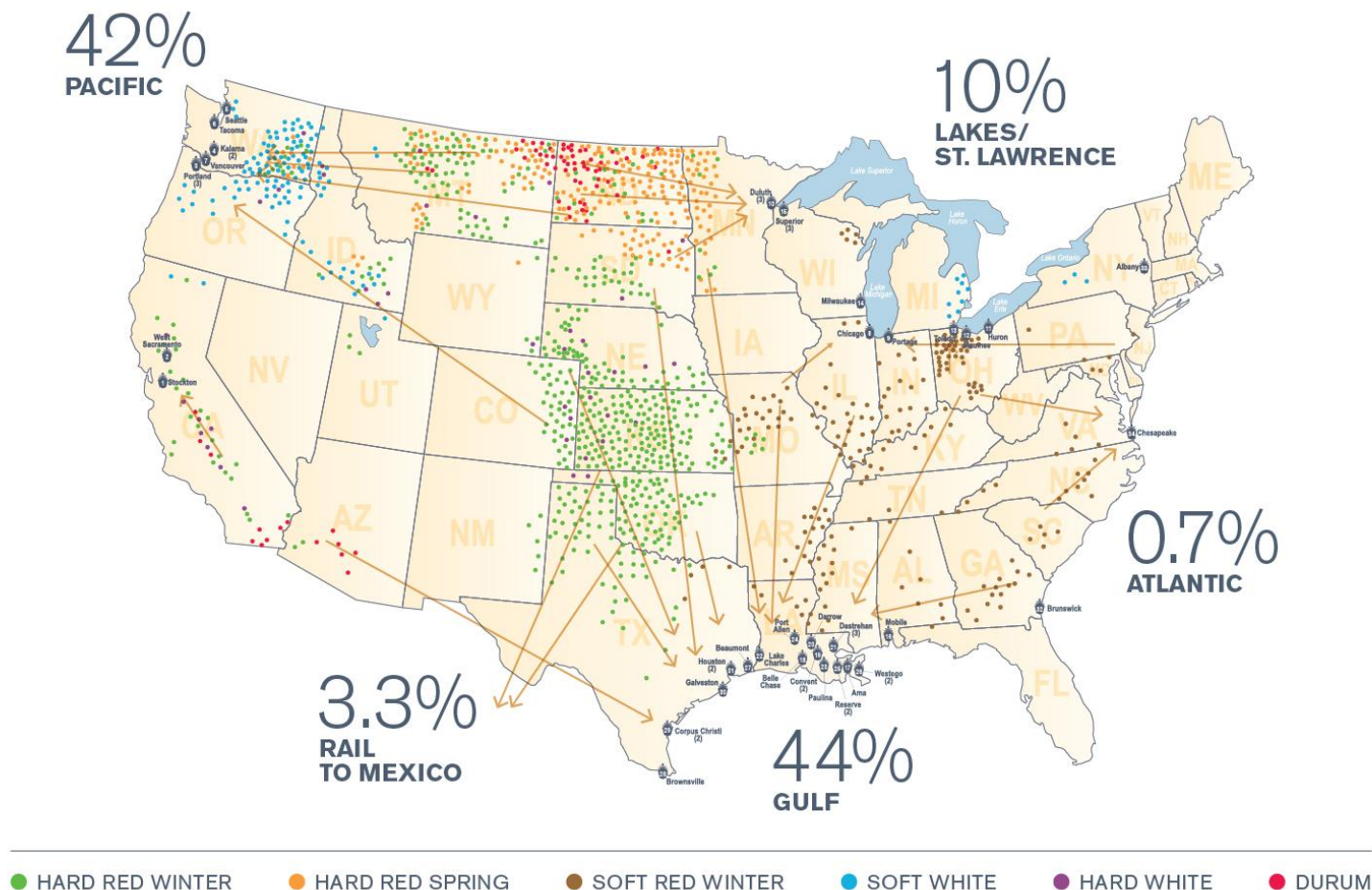
September, 2011



**U.S. WHEAT
ASSOCIATES**

The world's most reliable choice.

Six Classes; PNW, Gulf, Lakes, Atlantic

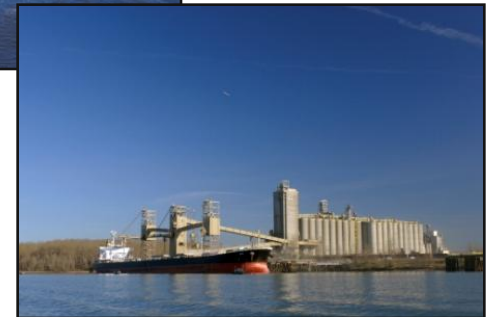


**U.S. WHEAT
ASSOCIATES**

The world's most reliable choice.

The U.S. Wheat Store is Always Open

- No export taxes or embargos
- Contract sanctity
- Market competition
- Transparent, assured pricing
- Assured quality

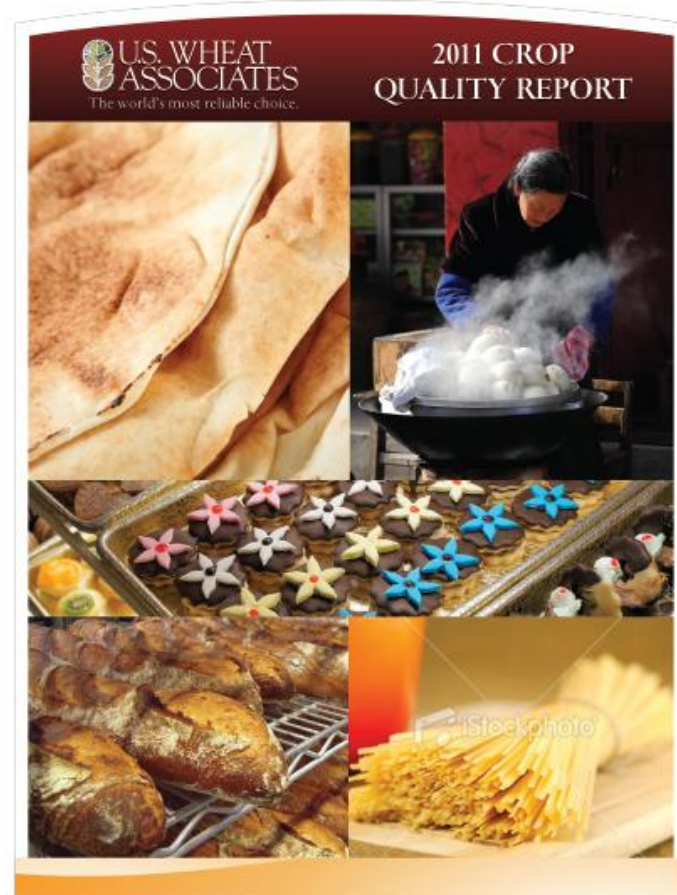


U.S. WHEAT
ASSOCIATES

The world's most reliable choice.

2011-2012 Comments — By Class

- 2011 Crop Quality Report and by class reports are posted at www.uswheat.org



U.S. WHEAT
ASSOCIATES

The world's most reliable choice.

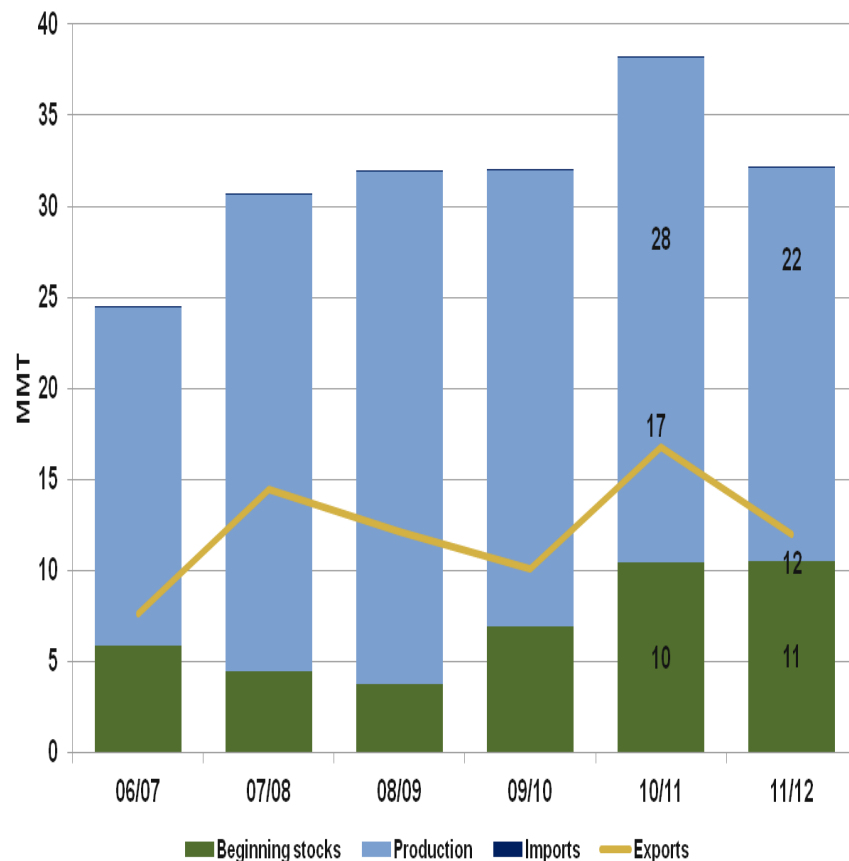
Hard Red Winter Wheat

2011 Crop, Sample Averages as of 9/16/11

- Production:
21.6 MMT (Avg: 25.1 MMT)

- Crop Development:
S. Great Plains - extreme temps, no rain, early harvest
N. Great Plains - rain, delayed harvest
PNW - yields exceptional

- Quality 2011 v. 5-Yr Avg:
Protein 12.4 (12.3)
TW (Kg/HI) 79.9 (79.5)
Humid. 10.7 (11.2)
Falling # 402 (413)



U.S. WHEAT
ASSOCIATES

The world's most reliable choice.



U.S. WHEAT
ASSOCIATES

The world's most reliable choice.



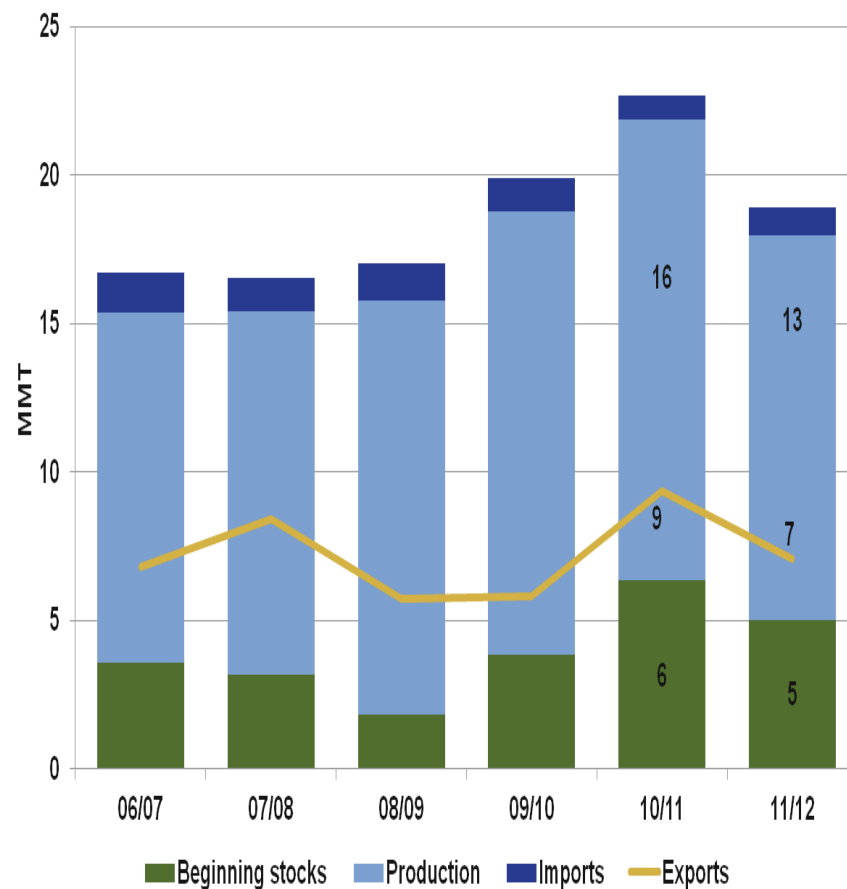
U.S. WHEAT
ASSOCIATES

The world's most reliable choice.

Hard Red Spring Wheat

2011 Crop, Sample Averages as of 9/16/11

- Production:
12.9 MMT (Avg: 13.7 MMT)
- Crop Development:
Extreme wet weather delayed or prevented planting and delayed harvest. Higher than avg. protein, but also higher than avg. S&B.
- | <u>Quality</u> | <u>2011 v</u> | <u>5-Yr Avg:</u> |
|----------------|---------------|------------------|
| Protein | 15.0 | (14.1) |
| TW (Kg/HI) | 78.7 | (80.4) |
| Humid. | 12.3 | (12.1) |
| Falling # | 385 | (401) |



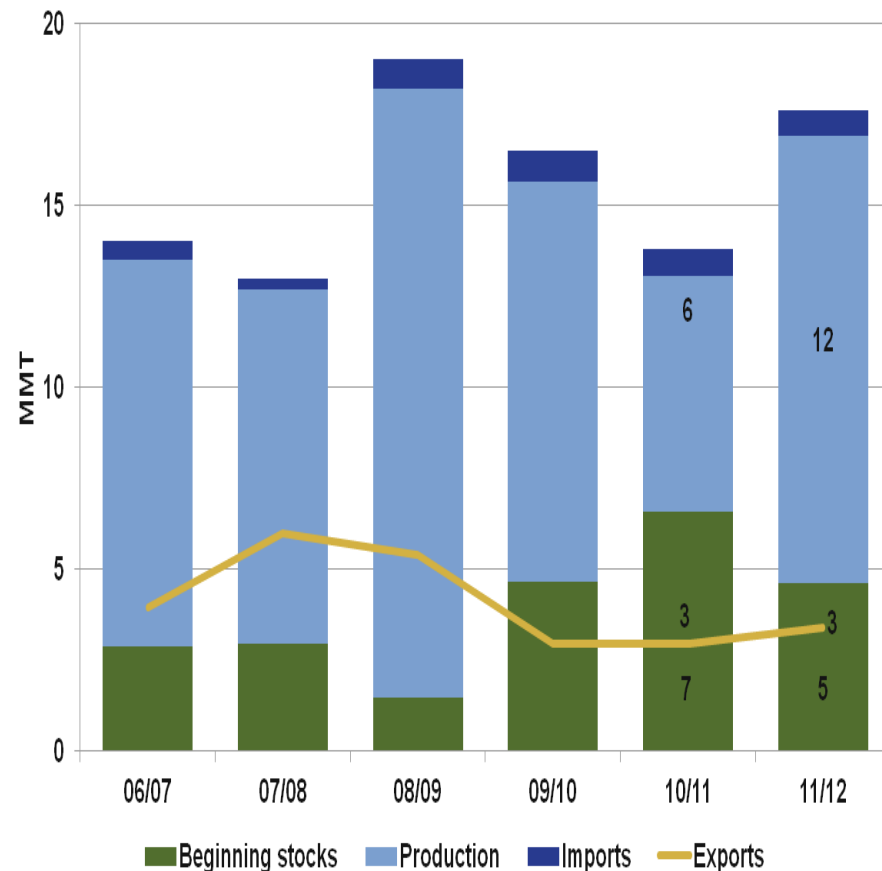
U.S. WHEAT
ASSOCIATES

The world's most reliable choice.

Soft Red Winter Wheat

2011 Crop, Sample Averages

- Production:
12.3 MMT (Avg: 10.9 MMT)
- Crop Development:
2011 averages similar to 2010 crop. More uniform quality, less DON
- | <u>Quality</u> | <u>2011 v</u> | <u>5-Yr Avg:</u> |
|----------------|---------------|------------------|
| Protein | 10.2 | (10.1) |
| TW (Kg/HI) | 77.5 | (77.5) |
| Humid. | 12.9 | (13.0) |
| Falling # | 330 | (329) |



U.S. WHEAT
ASSOCIATES

The world's most reliable choice.

Soft White Wheat

2011 Crop, Sample Averages as of 9/16/11

- Production:

8.1 MMT (Avg: 6.1 MMT)

- Crop Development:

Favorable harvest conditions,
Two weeks behind average.
Low moisture, more typical low
proteins, good test weights.

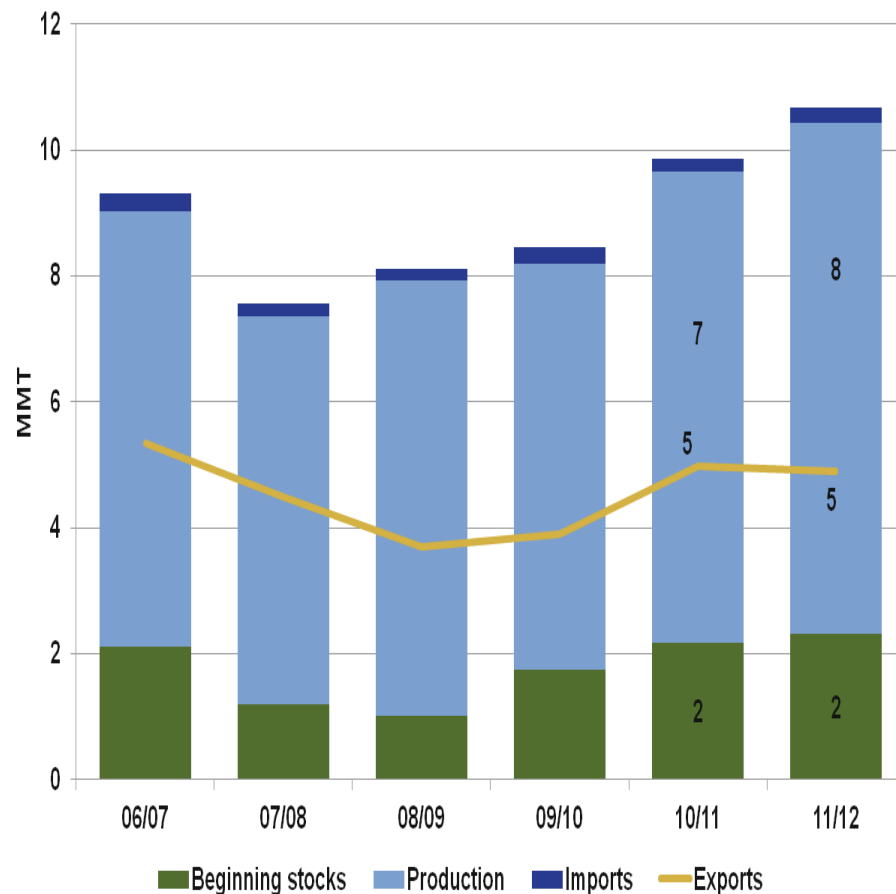
- Quality 2011 v 5-Yr Avg:

Protein 9.1 (10.4)

TW (Kg/Hl) 80.0 (78.6)

Humid. 9.7 (9.3)

Falling # 307 (330)



U.S. WHEAT
ASSOCIATES

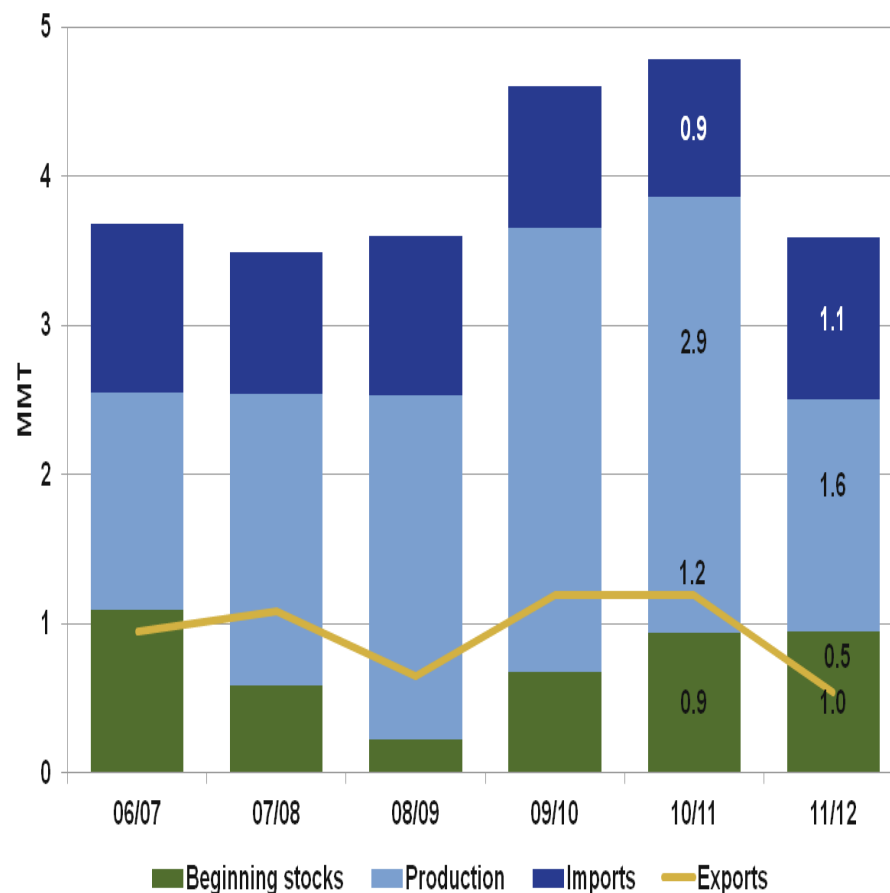
The world's most reliable choice.

Durum Wheat

2011 Crop, Sample Averages as of 9/16/11

- Production:
1.6 MMT (Avg: 2.4 MMT)
- Crop Development:
Delayed planting, significant area not planted north.
Still average protein and a sound crop.
- Quality 2010 v. 5-Yr Avg:

Protein	14.1	(14.4)
TW (Kg/HI)	76.8	(78.5)
Humid.	11.7	(11.6)
Falling #	389	(361)



U.S. WHEAT
ASSOCIATES

The world's most reliable choice.

The background of the slide is a composite image. The top half shows rolling hills under a blue sky with some clouds. The bottom half is a close-up of a field of golden wheat. A large white rectangular box with a yellow border is centered on the slide, containing text.

**Thank you for the opportunity to discuss some
important issues.**

We appreciate your business!



The world's most reliable choice.