

Modern Packaging and Weighing Technology for Industrial Food Producers



Welcome to the world of
BEHN + BATES

Open Mouth Bag Filling System





ORBIS

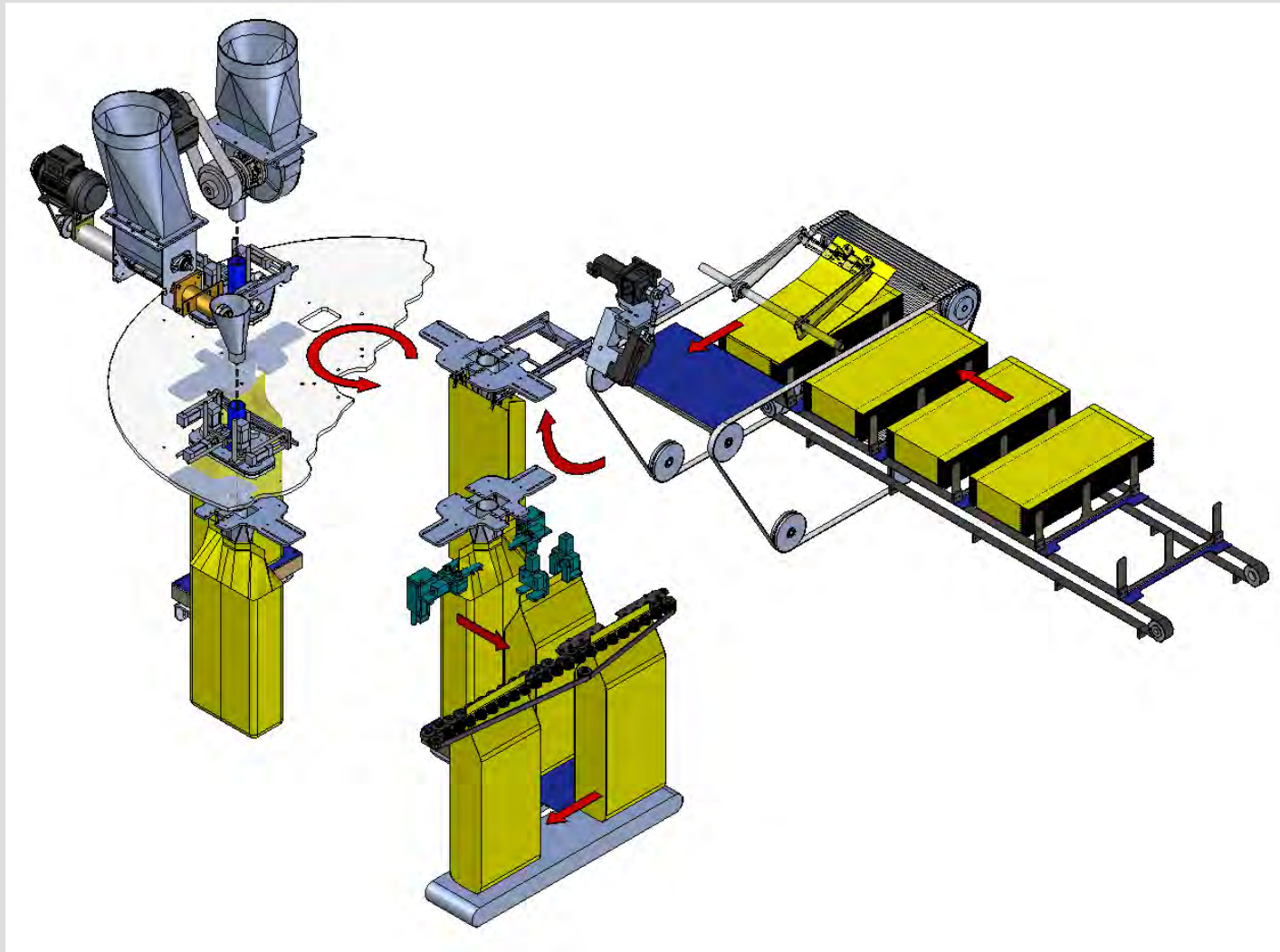
**Modern
Multiple Spout
Rotating Packaging
System for
Open Mouth Bags**



The ORBIS

Products:	Gross weighing system for powdery and aerated products	
No. of spouts:	4	
Capacity:	300 - 600 bags/h	
Bag type:	gusseted, flat type pillow bags made of paper, PE, PP or combinations	
Bag dimension: (standard)	bag length:	450 – 1.000 mm
	bag width:	260 – 550 mm
	gusset depth:	100 – 170 mm

ORBIS – Functional Diagram

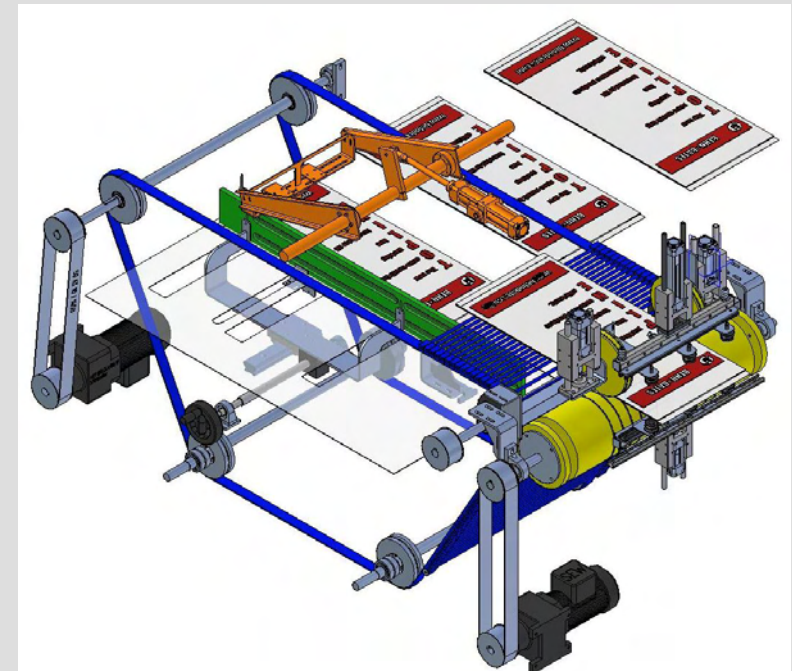


ORBIS



with
empty bag
magazine and
integrated
control panel

Leersackmagazin



universeller Einsatz – auch für PE und gewebte PP-Säcke

Empty Bag Singling Station



lifting of the empty bag bottom



bag transport to the opening station

Leersacköffnung

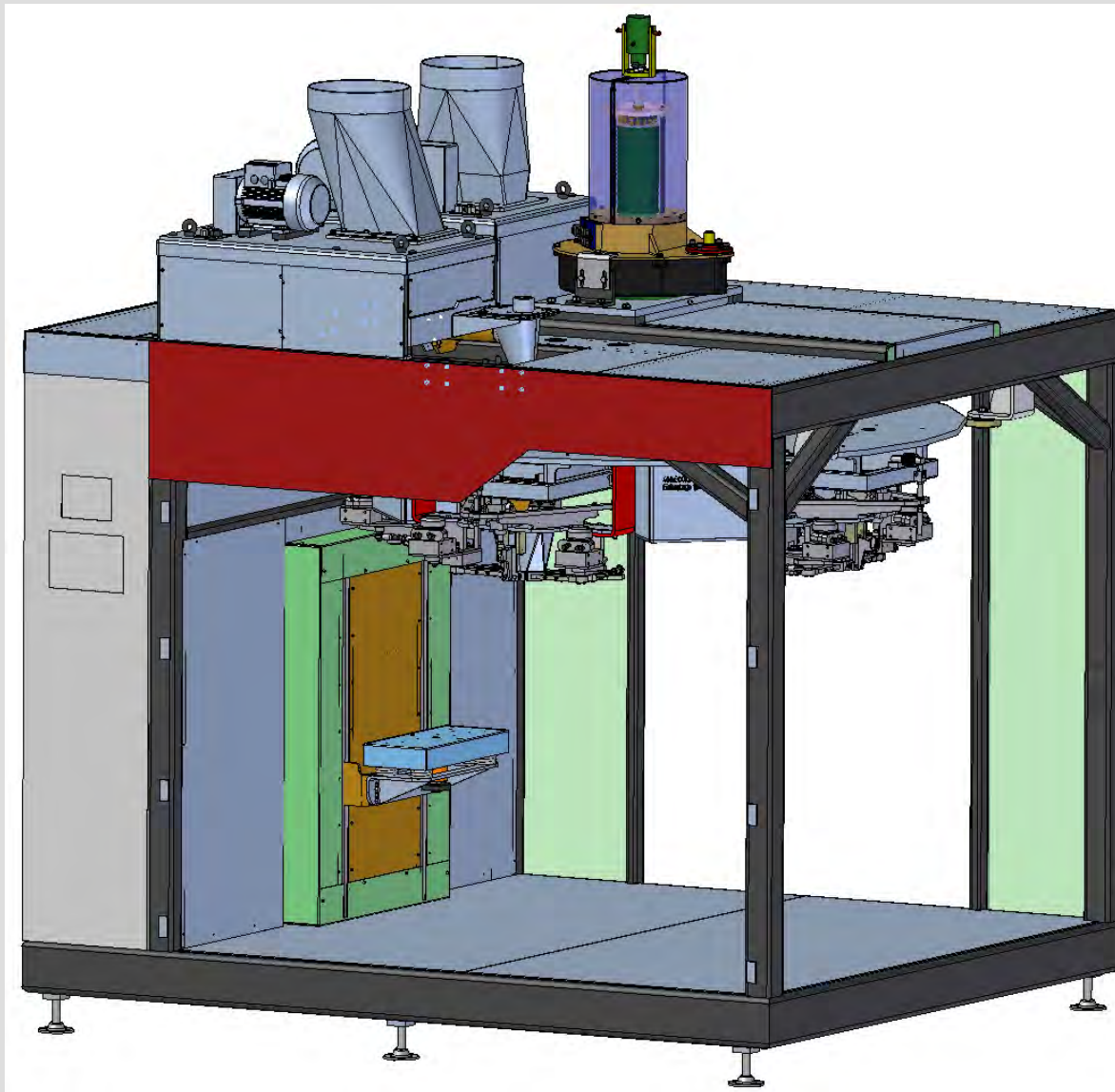
Sackanleger mit
vorgeöffnetem Sack



Empty Bag Placer

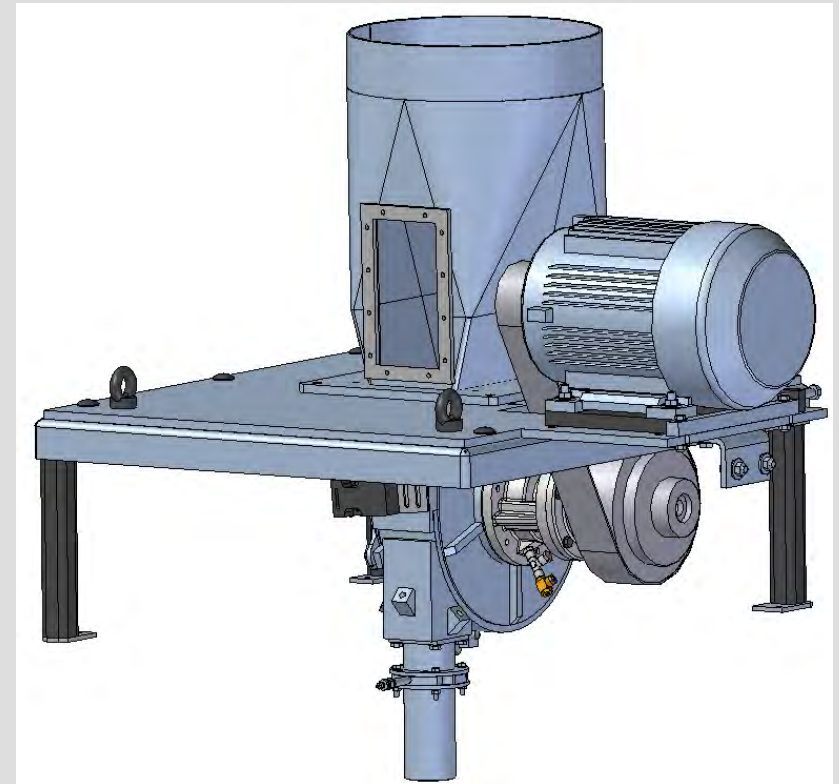
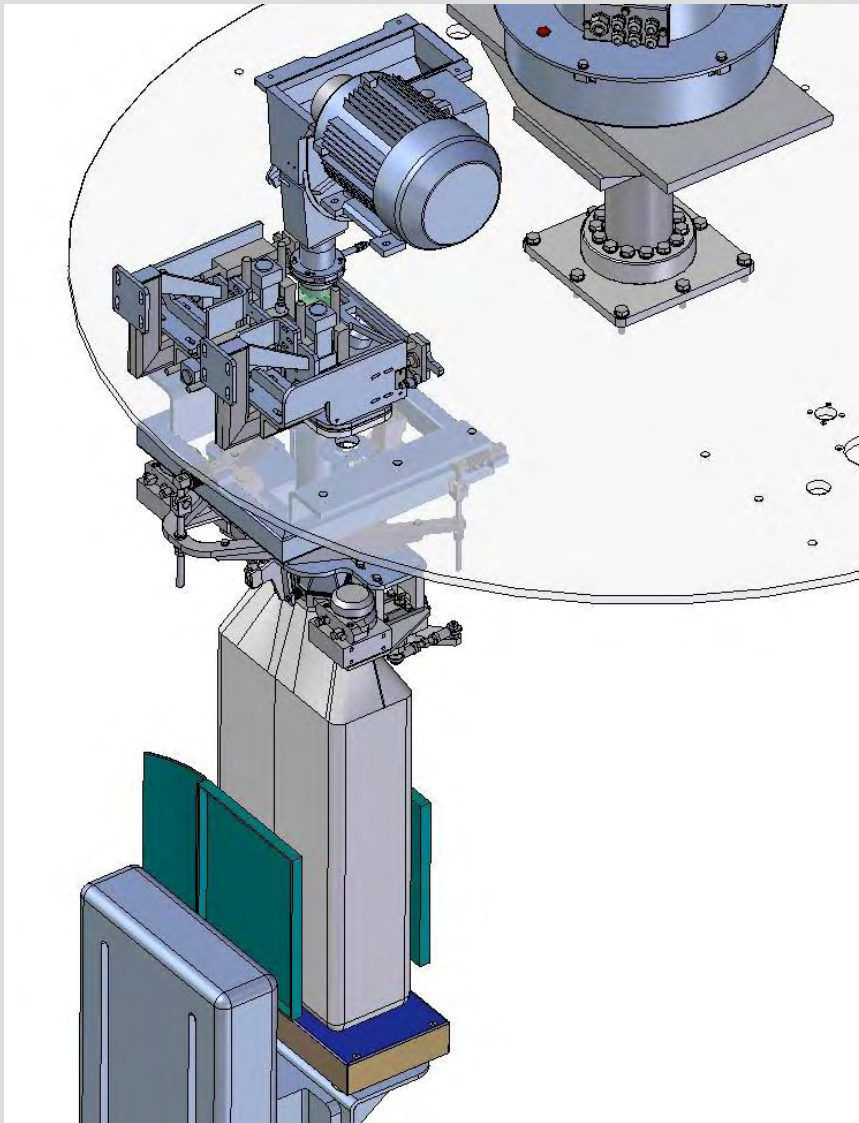


bag transport to the filling spout



**Rotating Unit
with
4 filling spouts**

Coarse Flow Dosing with Impeller System (Inlet-Outlet 1.015 mm)



Product Dosing



separate
coarse and trickle
flow dosing
systems

Product Dosing

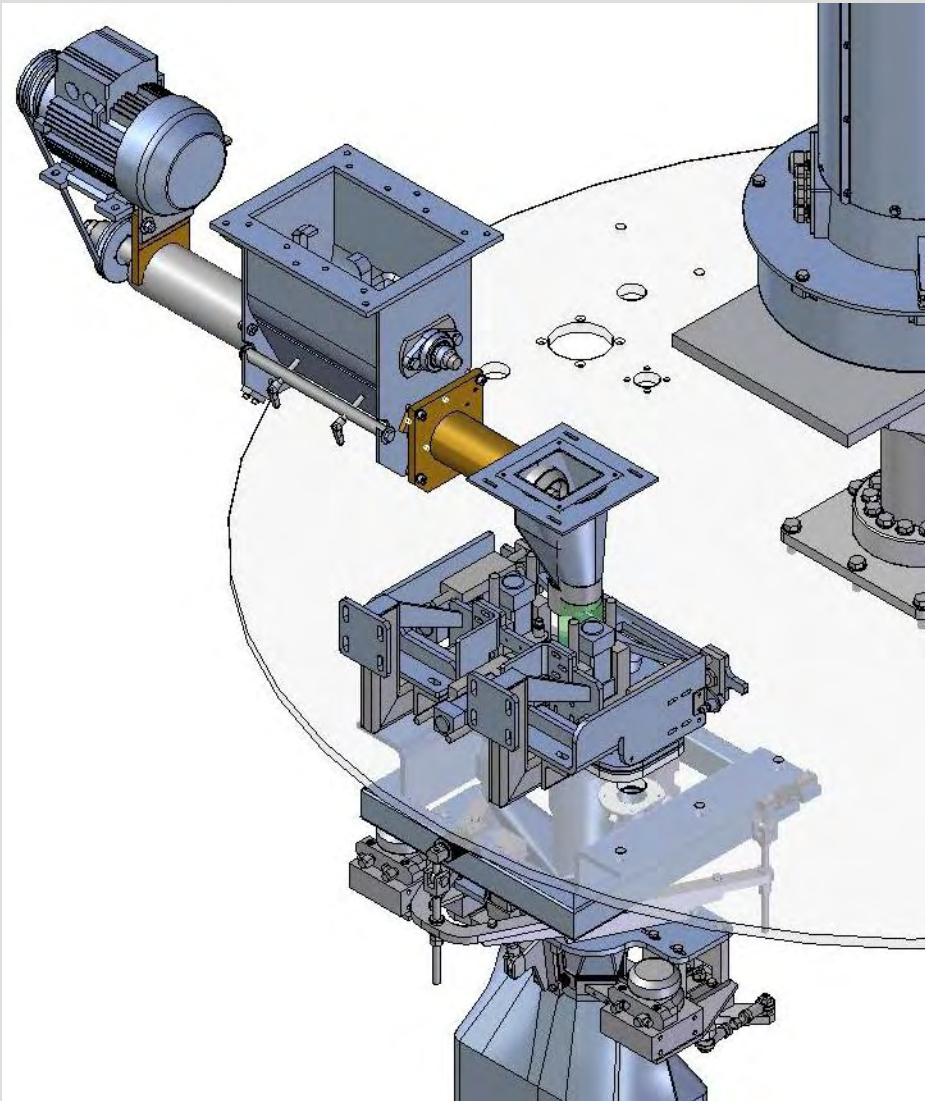
Coarse Flow Dosing with impeller system

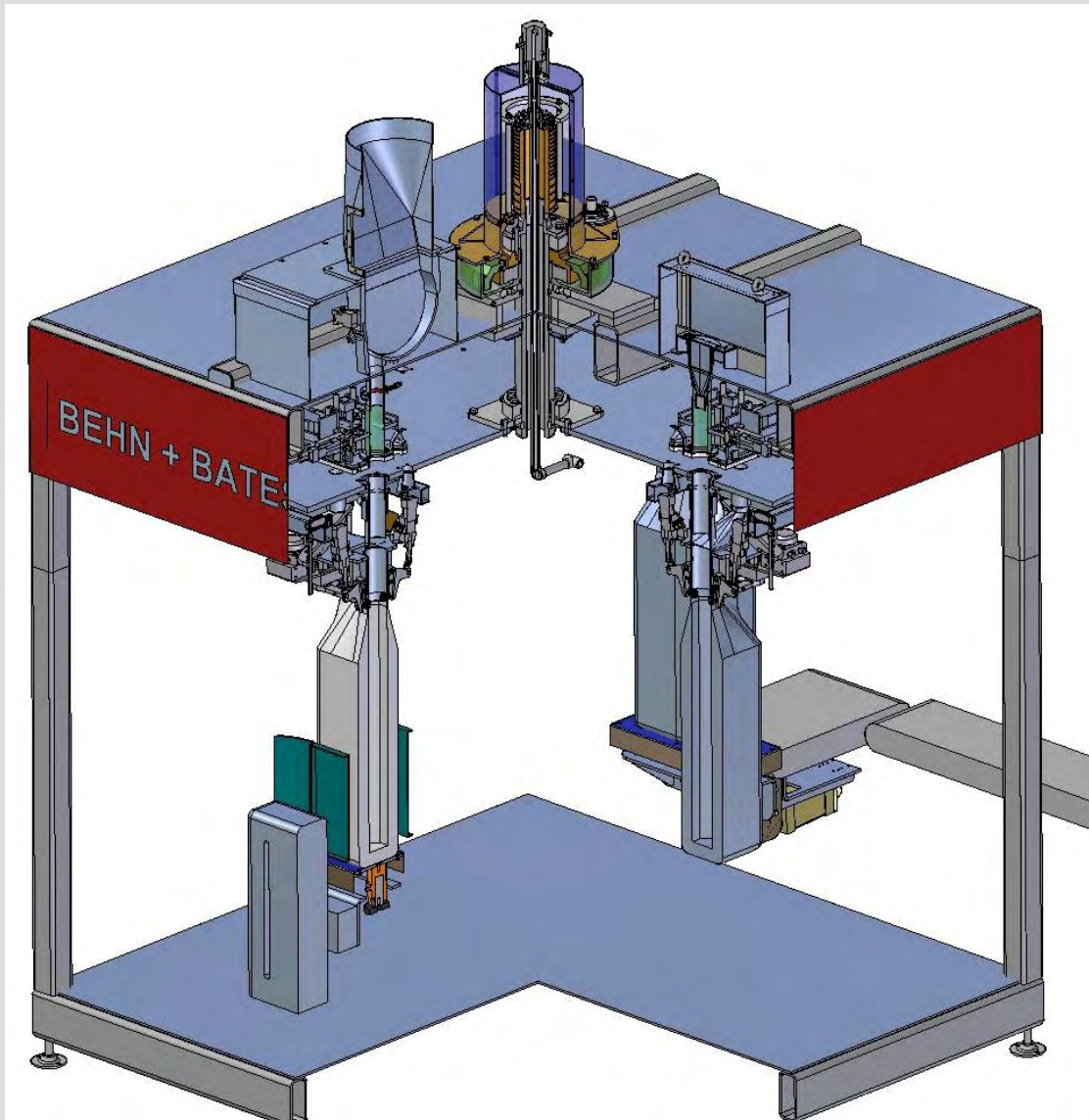


Impeller with closed cover and product tray for cleaning



Trickle Flow Dosing with screw system





Operating Sequence with Bag Vibrator



Rotating Unit

with 4 individual filling spouts



with closed machine bottom

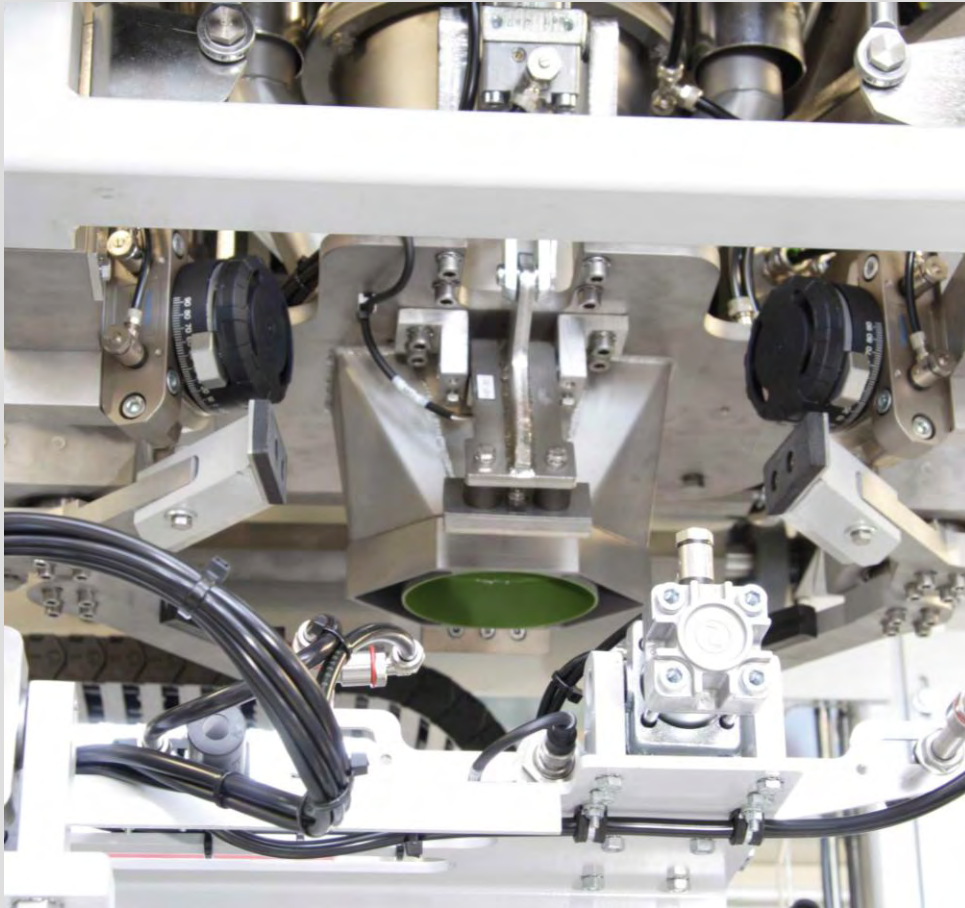




Rotating Unit

- 1. bag filling in coarse flow, with integrated bag bottom vibrator

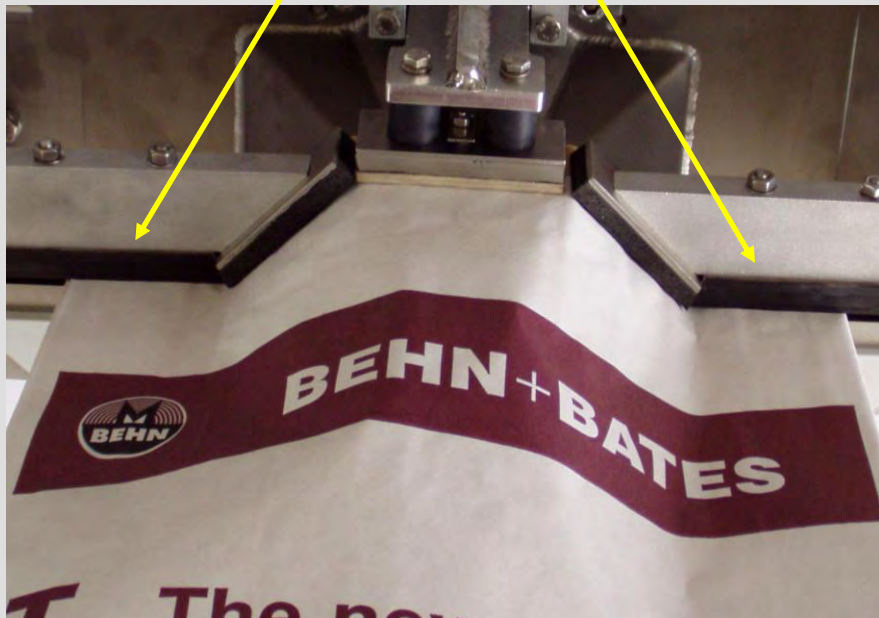
Filling Spouts



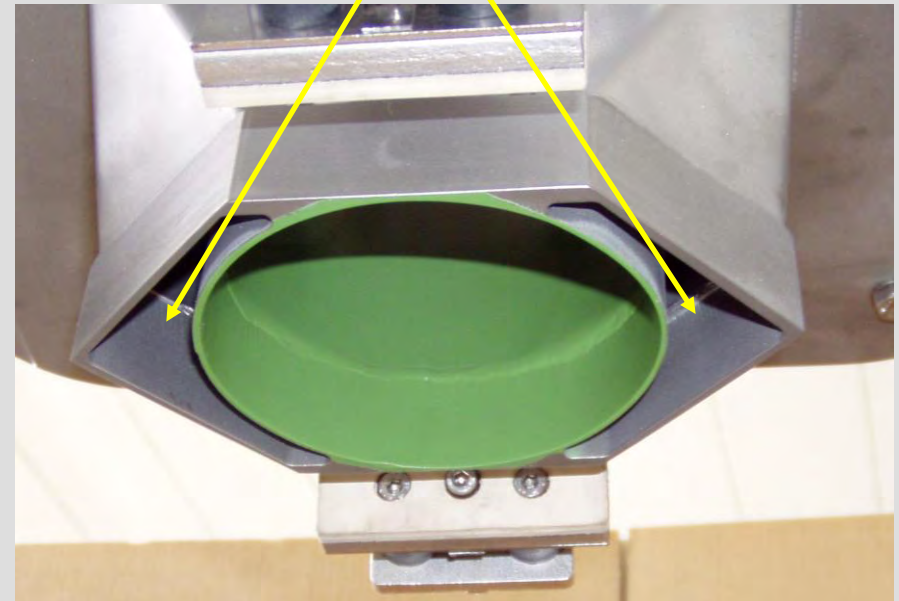
- hexagonal filling spouts
- all-round clamping-jaws
- internal deaeration
- dedusting connection
- gross weighing system
– mounted on 3 load cells

Hexagonal Filling Spout

closed bag clamps



internal bag deaeration



Rotating Unit

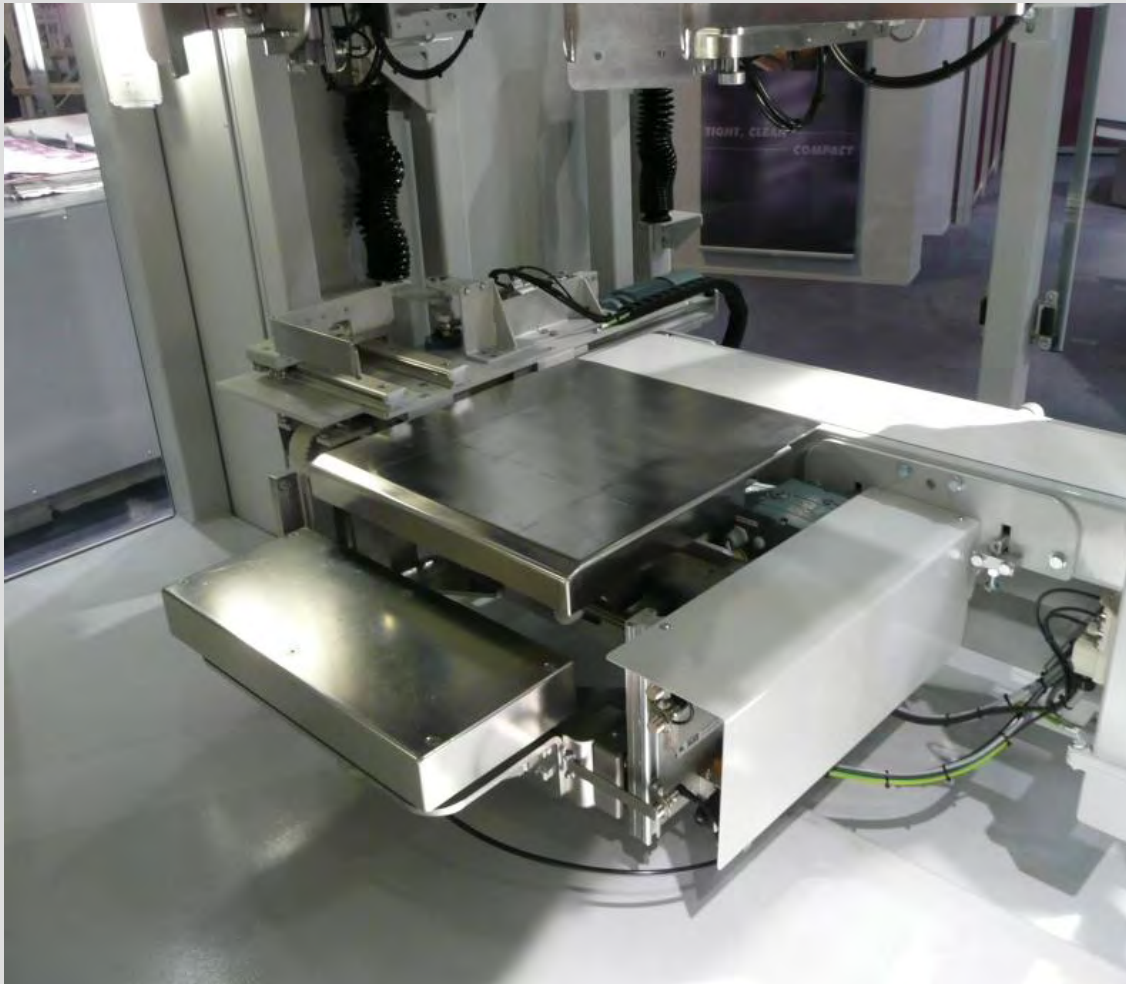
- 2nd bag filling in trickle flow



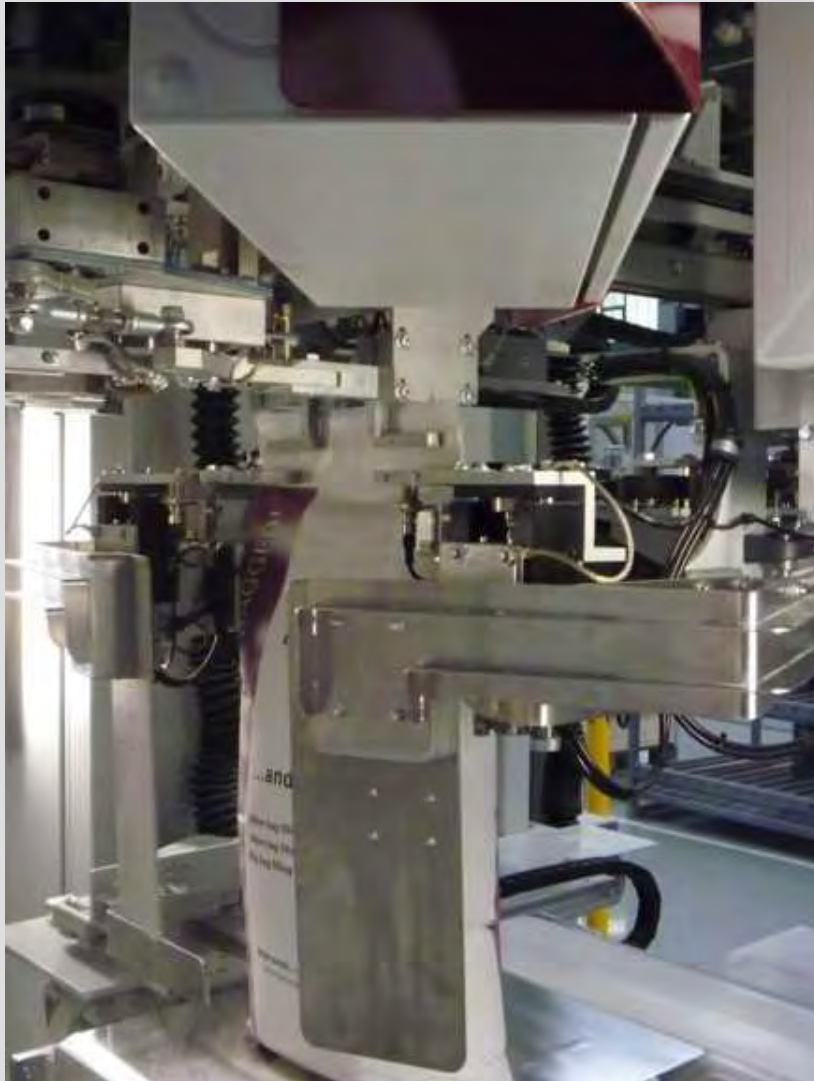
Non Compacted / Compacted



Full Bag - Discharge



2nd bottom vibrator
or
densification of the
product by a
vibrating lance



Rotating Unit

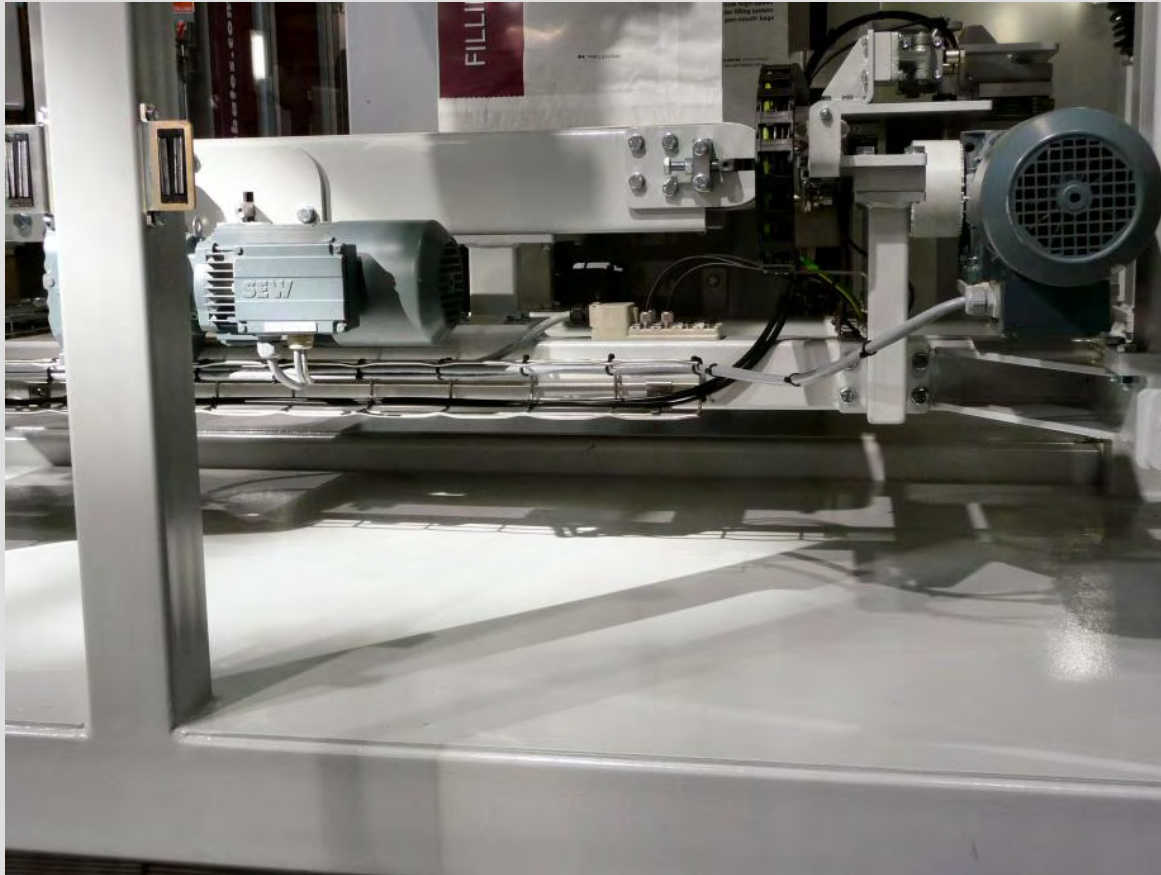
- full bag discharge
- incl. integrated bag top spreading
- incl. 2nd bag bottom vibrator

Full Bag - Discharge

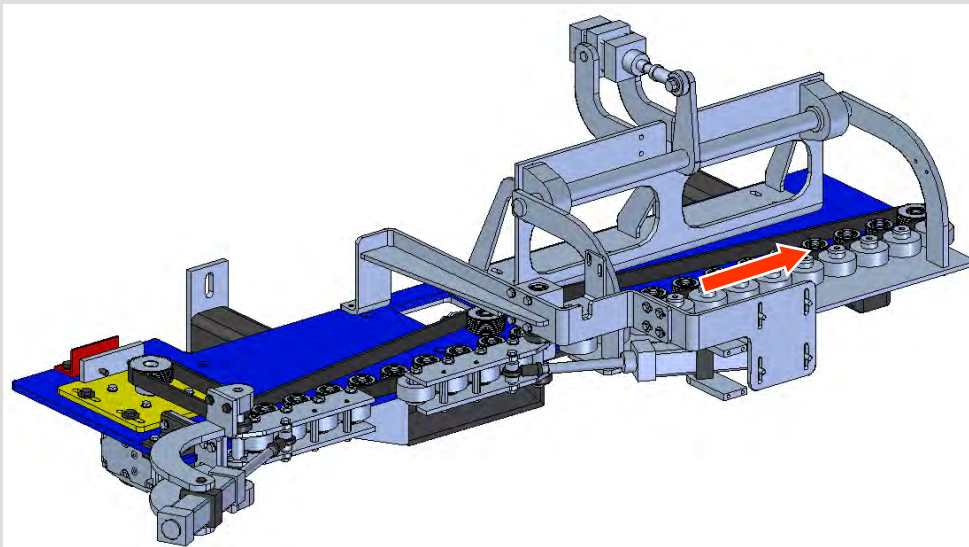
Take-over of the filled bag with stretch-out into the belt driven transfer station



Full Bag - Discharge

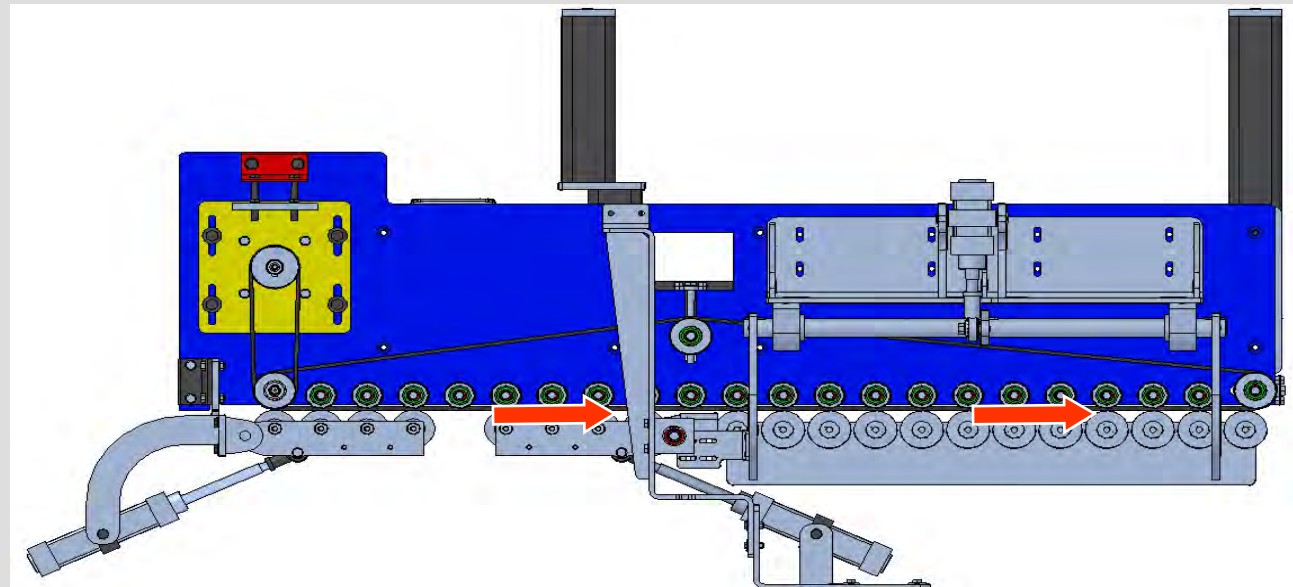


**fully suspended
belt conveyor with
motor driven
height adjustment**

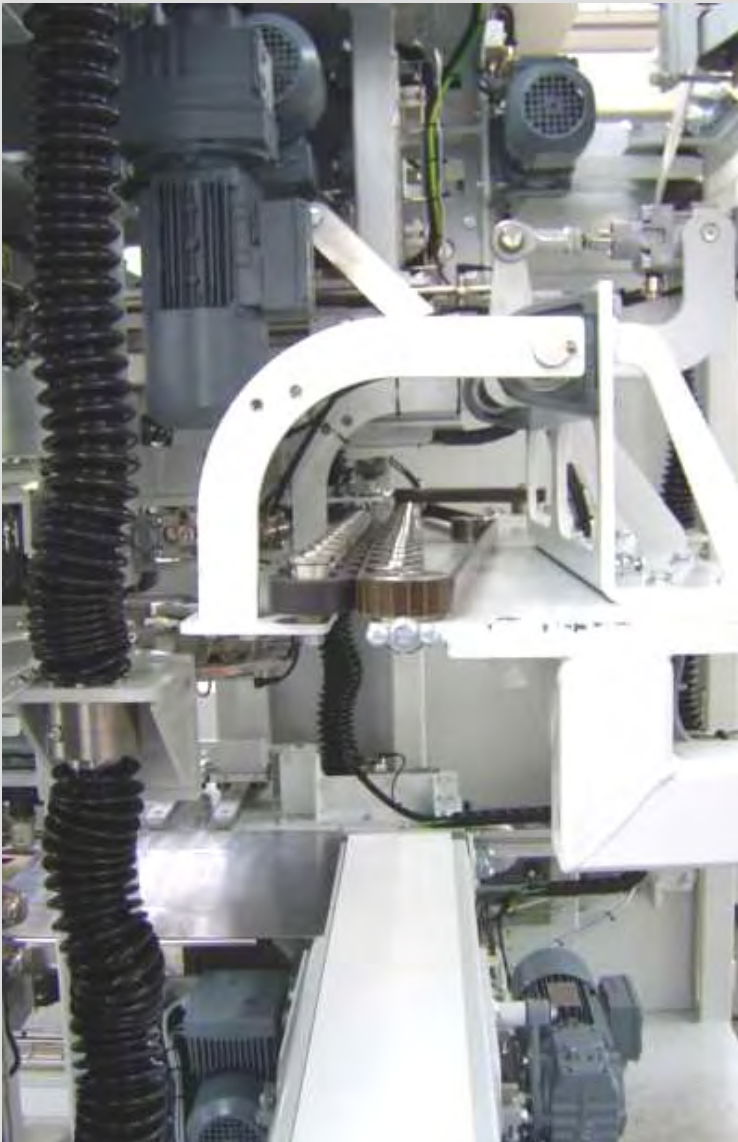


**Full Bag – Transfer
with belt drive**

**option:
head air evacuation
- or bag closing system**



Full Bag - Discharge with controlled bag guiding





Rotating Unit

- View underneath the rotating unit
- saubere Verlegung der Leitungen im oberen Maschinenbereich, außerhalb des Staubbereiches

Filling System including Bag Closing System



ORBIS - Advantages

- compact high capacity filling system with „gross“ weigher
- dust tight hexagonal filling spout – with internal deaeration
- overlapping coarse and trickle flow filling due to multiple filling spouts
- 2. integrated bag compacting in the discharge unit (option) lead to high bag filling degree
- bags are maintained closed when being transferred to the closing systems (welding, gluing, folding, sealing/sewing)
- Full bag transfer at an equal height, rotation with servo drive
- dust-reduced packaging area due to the closed system

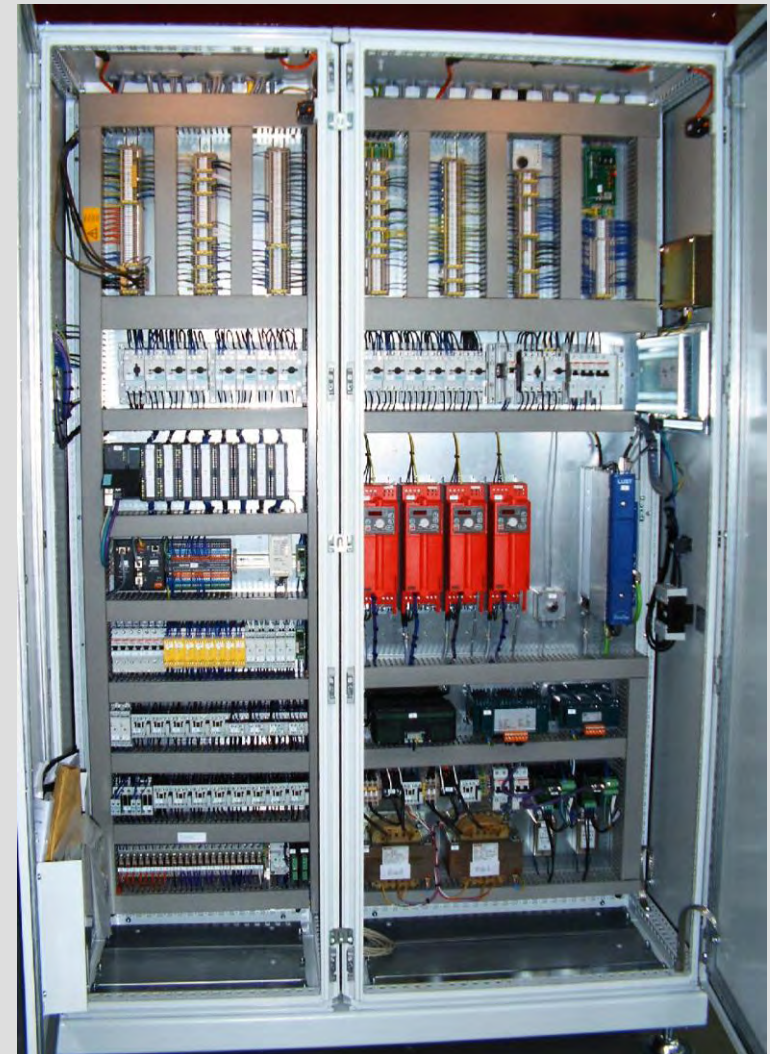
ORBIS - Advantages

- product densification by vibration and / or vacuum probes (Option)
- ATEX Zone class 22 provided
- large security windows for perfect supervision of all operation sequences
- suspended and height adjustable discharge belt conveyor
- integrated closed machine bottom for perfect cleaning and easy maintenance
- Integration of all bag closing systems possible
- integrated control panel with touch screen – completely wired and factory tested = quick erection / commissioning

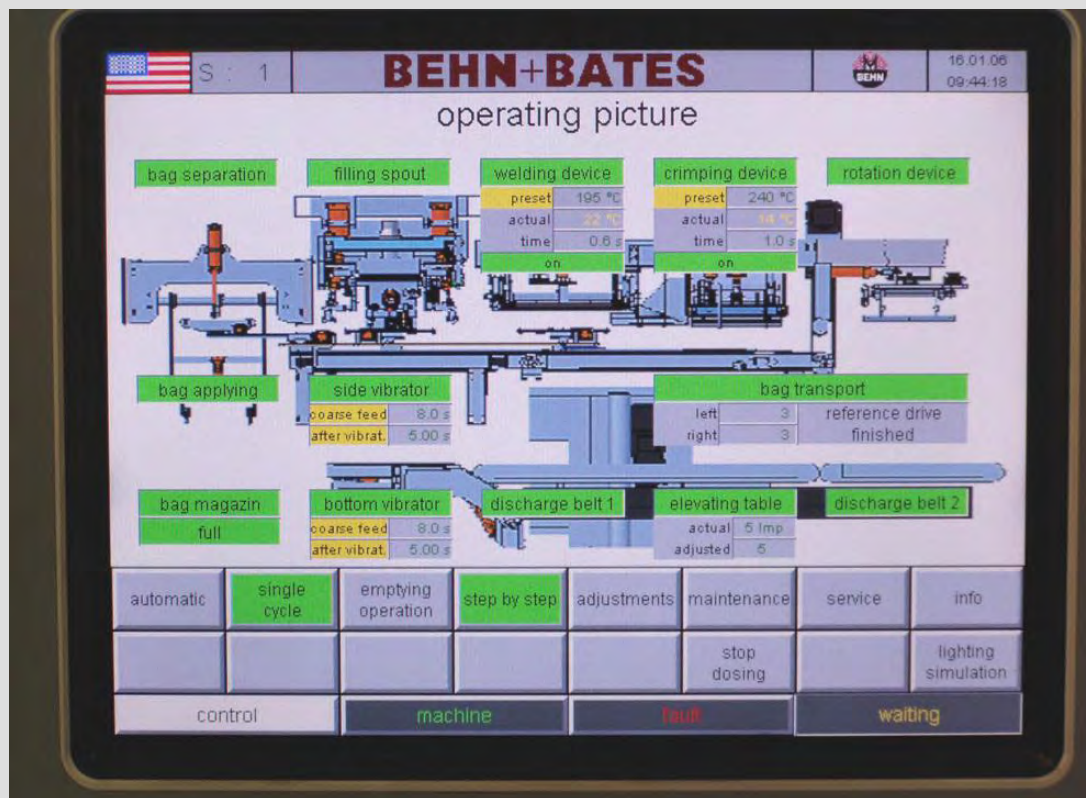
Control Panel



Weighing Electronic MEC III and Touch Panel TP 104



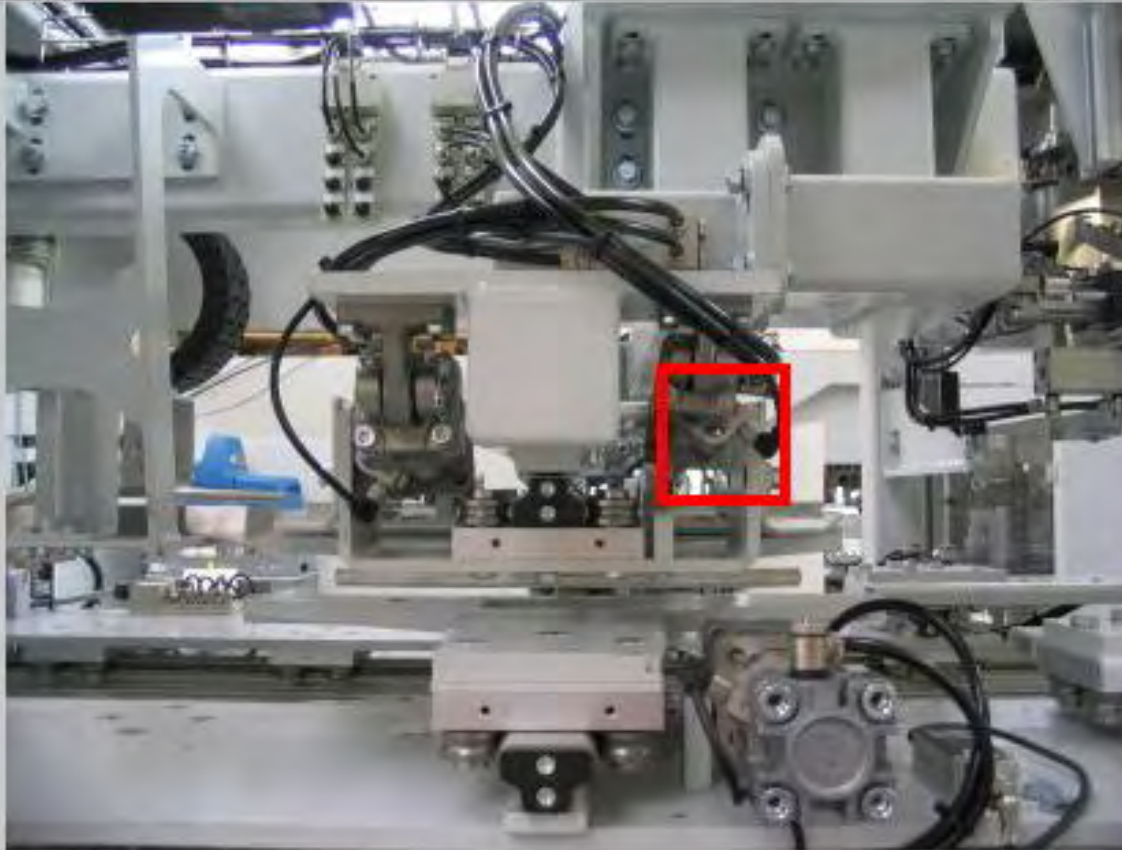
Touch Panel



TP 104

- Colour display 10,4" (211x158)
- resolution 640 x 480 Pixel
- 25536 colours
- MPI and Ethernet

Schweissung: Bewegungsstörung Sicken



Magnetfeldsensor =WEL-B4 kontrollieren, Timer 219 kontrollieren

Touch Panel

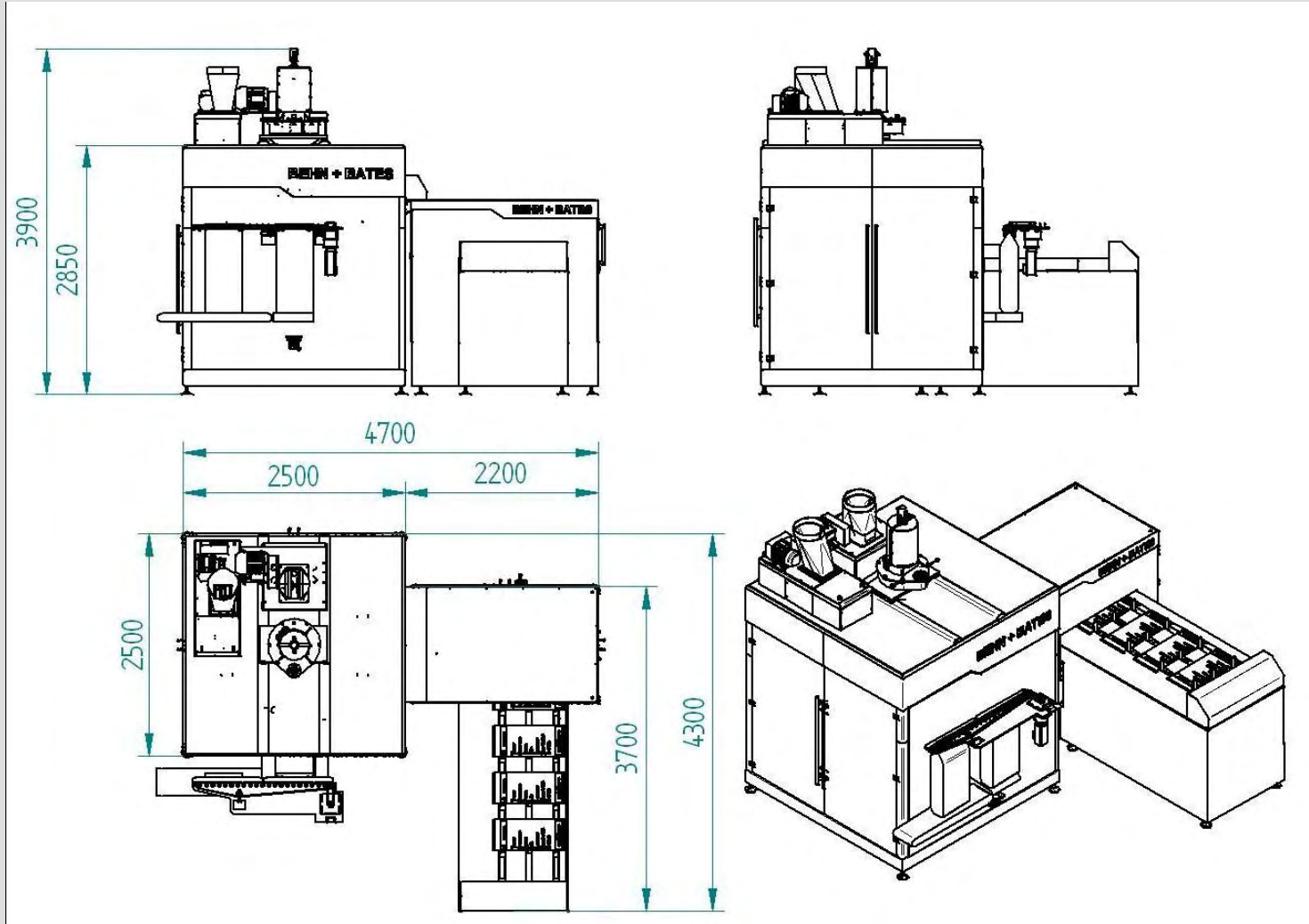
with fault
visualisation
(picture and
clear text)

ORBIS



**top view
with
closed roof
and cabling**

ORBIS Packaging System



BEHN + BATES

**Your Professional Partner for
Packaging Food Products**

by using

**Clean, Hygiene and Sanitary
Technologies**

Best Choice for Total Food Packaging