



The Mill in Your Hands

I - MILL





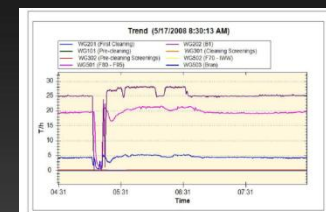
PLANT MONITORING

iPad2



Products	Quantity	Average on period	Average on period	Waste	Total	Average
Grain	100000	100000	100000	100000	100000	100000
Grain	100000	100000	100000	100000	100000	100000
Grain	100000	100000	100000	100000	100000	100000
Grain	100000	100000	100000	100000	100000	100000
Grain	100000	100000	100000	100000	100000	100000
Grain	100000	100000	100000	100000	100000	100000
Grain	100000	100000	100000	100000	100000	100000
Grain	100000	100000	100000	100000	100000	100000
Grain	100000	100000	100000	100000	100000	100000
Grain	100000	100000	100000	100000	100000	100000

YIELDS PLANT PERFORMANCES



I - MILL

REPORTS





- Adjustable Consumption Limits for Band
- Alarms for Excessive Consumption
- Controlled Sections Stops
- Controlled Sections Restart
- Energy Consumption Forecasts
- Periodic Consumption Report
- Production and Consumption Cross Reference

I - MILL



- Domotics Lighting System Control
- Intelligent Switch OFF - ON
- Manage with Programmable Timer
- Floors Inspection with CCTV Surveillance System
- Record Security Cameras Datas

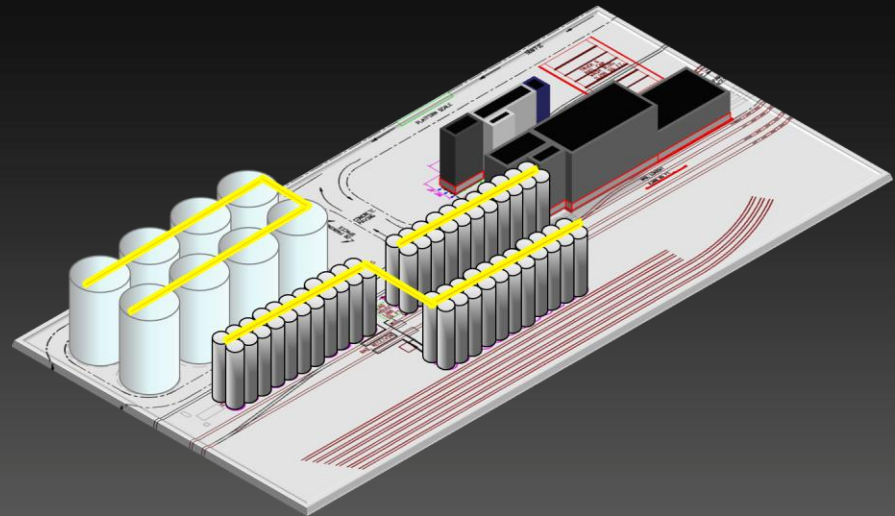
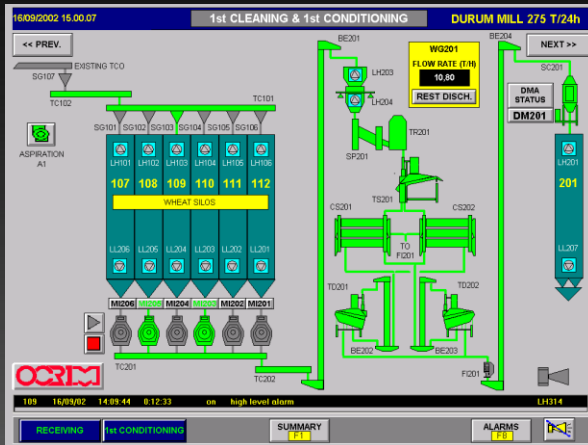


I - MILL

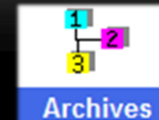
iMill.ppsx



- **MODULAR SYSTEM FOR PROCESS MANAGEMENT**
- **DEVELOPED IN OCRIM WITH ADVANCED TECHNOLOGIES**
- **EASY TO IMPLEMENT FOR ANY MILLS, PRODUCT STORAGE, FEEDMILLS AND FOOD INDUSTRY**



MANAGEMENT @ MILL



OCRIM

[Reload](#) [Stocks](#) [Recipes](#) [Cycles](#) [Archives](#) [Maintenance](#) [Warnings](#) [System](#) [Help](#)

MENU : Cycles

- Grain receiving
- Blending / Transfer
- Cleaning
- Milling
- Flour transfer
- Flour bulk load out
- Flour packing
- Mill periodic yields
- Mill lots yields
- Mill product yields
- Flour return

Control and management software for mills, feedmills, storage facilities

Designed and Developed by **OCRIM**

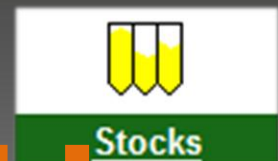
Management@mill

Software per il controllo e la gestione di molini, mangimifici e strutture di stoccaggio.

MANAGEMENT @ MILL

STOCK MONITOR

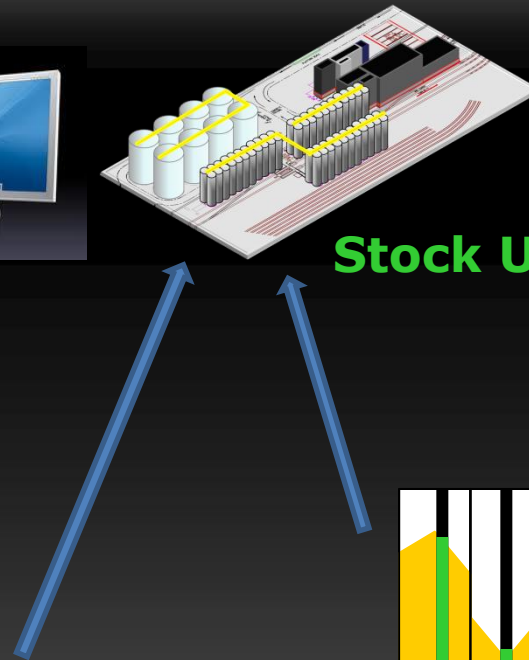
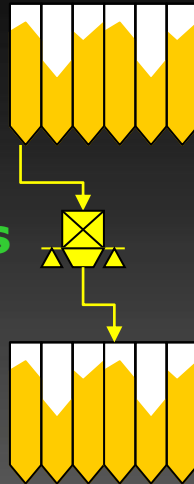
- Stock Updating in real time for each grain bin with Lot Product Archive
- $\text{Quantity Level Data} = \text{Previous Quantity} + \text{FlowIn} - \text{FlowOut}$
- Statistics, Daily Level Changes and Manual Adjusting
- Reordering Policy



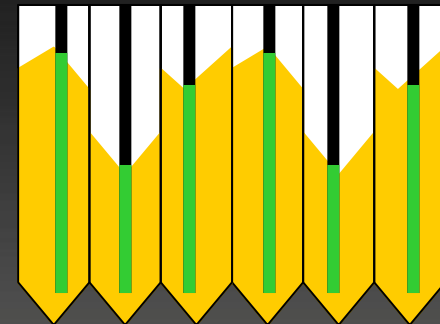
MANAGEMENT @ MILL



Scales



Stock Updating & Statistics

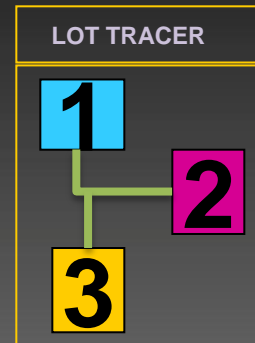


Level Sensors

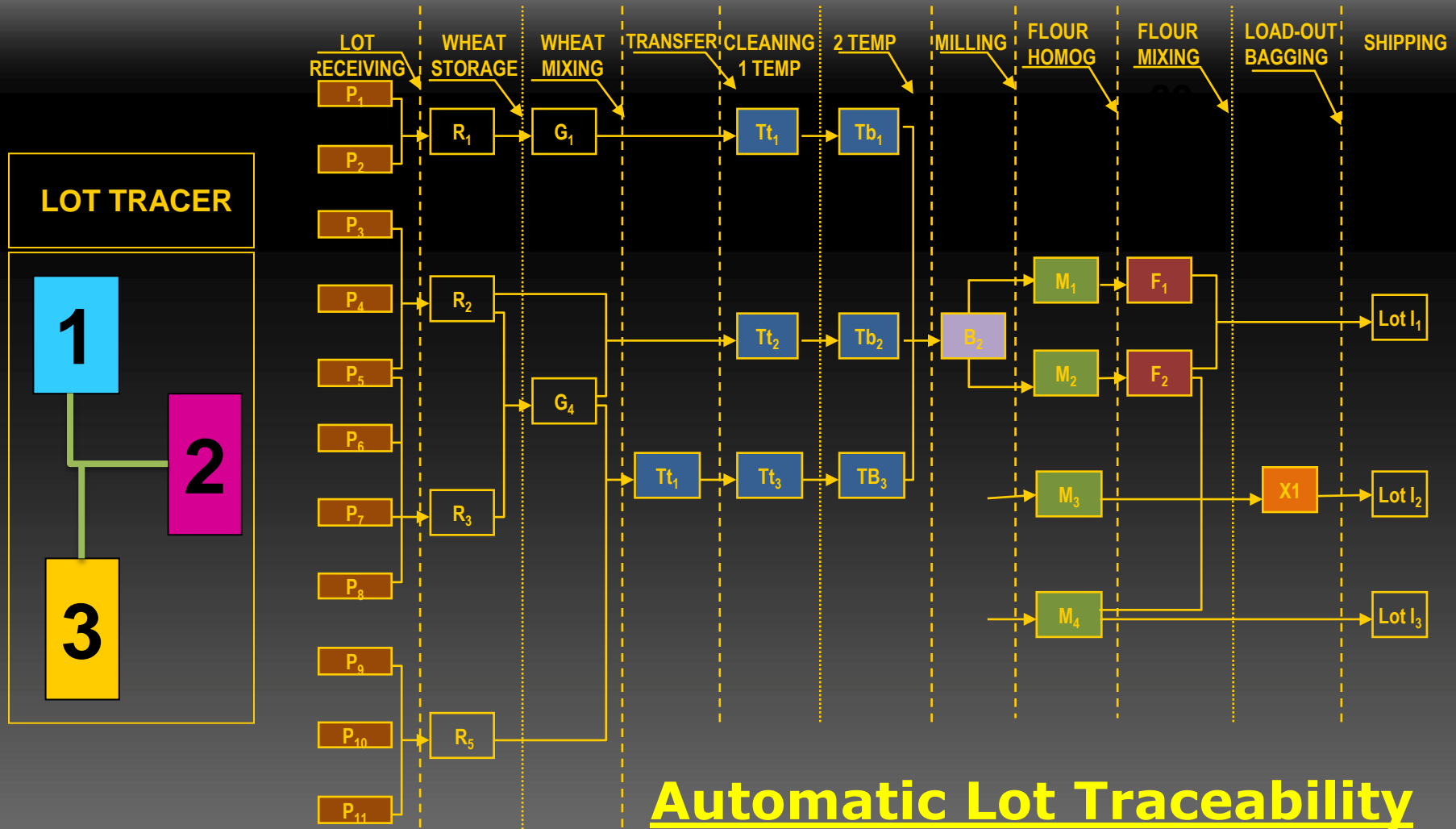
MANAGEMENT @ MILL

LOT TRACING

- Excellent Control and Quality of the Final Products
- Consumers safety for the Finish Products from each identified lot made
- Lots are created automatically depending on the real production processes
- Lot Archive Database
- Lot Map



MANAGEMENT @ MILL



Recipe Manager

- Automatic Mill Adjustment Set-up for Faster and Flexible Production Changes
- Manual 60 – 90 minutes → Automatic 1 – 5 minutes
- Formula Optimization
- Recipes Database :
 - New
 - Open
 - Save / Save as



MANAGEMENT @ MILL

Production Planner

- Single Order Execution
- Production Scheduling
- Sale Plan (MRP)

Piano dosaggio

				Progressivi	Codice prodotto finito	Nome prodotto finito	Versione	Nome ricetta	Numero di batch	Dimensione batch	Destinazione	Stato ordine	Materiali disponibili LED
X				60	1	prodottoFinito1	1	ricetta senza macro	1	400 kg	INSACCO	active	
X				305	1	prodottoFinito1	1	New recipe 81	5	1000 kg	1	locked	
X				72	1	prodottoFinito1	1	ricetta senza macro	1	500 kg	RINFUSA	released	

Fabbisogno

Il sistema è in modalità SEMI-AUTOMATICA. Cliccare su START PLANNING per avviare il primo ordine RELEASED

PASSA IN AUTOMATICO

Production lot order execution

- Programmed Start-Up (date, time)
- Machine Automatic Start / Stop
- Alarm Stand-by
- Automatic production change
- «End of Lot» condition Set :



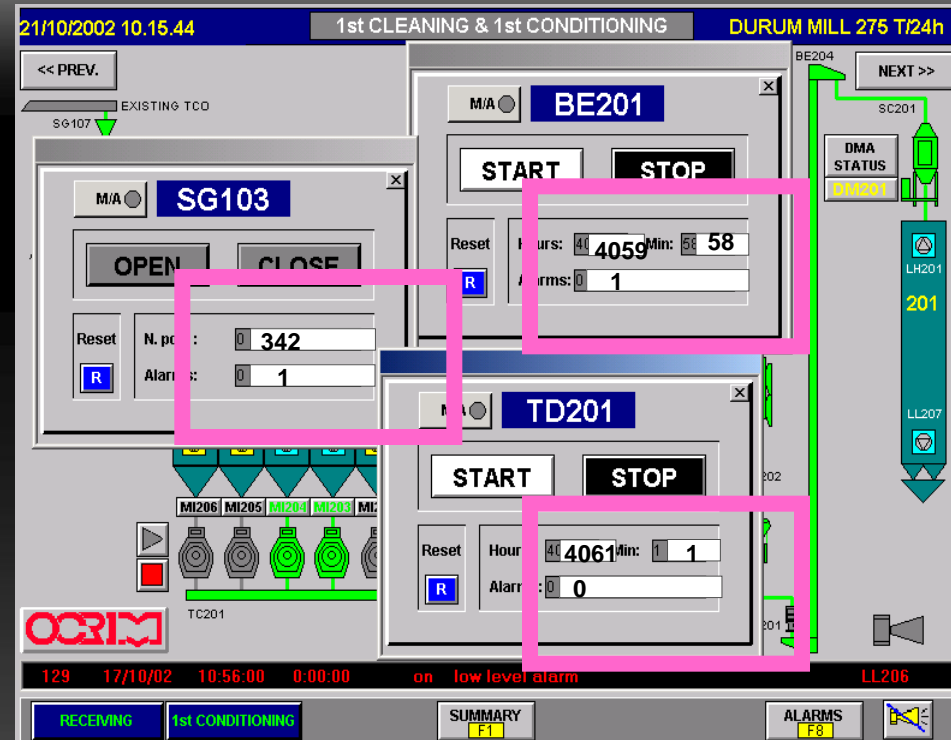
- By Quantity
- Source Emptying
- Destination Filling



MANAGEMENT @ MILL

Maintenance Planning

- Maintenance planning based on actual runtime hours for every single machine
 - Real (Actual Working)Time Alarms
- Automatic Planned Maintenance guidance
- Job / Intervention Reports
 - Maintenance Task Statistics
 - Technical Documentation



MANAGEMENT @ MILL

Maintenance Cost Analysis

- Preventive Maintenance Costs:

- Intervention (Programmed)
- Plant Stop (Downtime)
- Early Replacement (Spare Parts)



- Corrective Maintenance Costs:

- Production Interruption (Downtime, Missed Deadlines)
- Manned Intervention (Unexpected)
- Emergency Replacements (Cost Intensive)



MANAGEMENT @ MILL

Maintenance Considerations

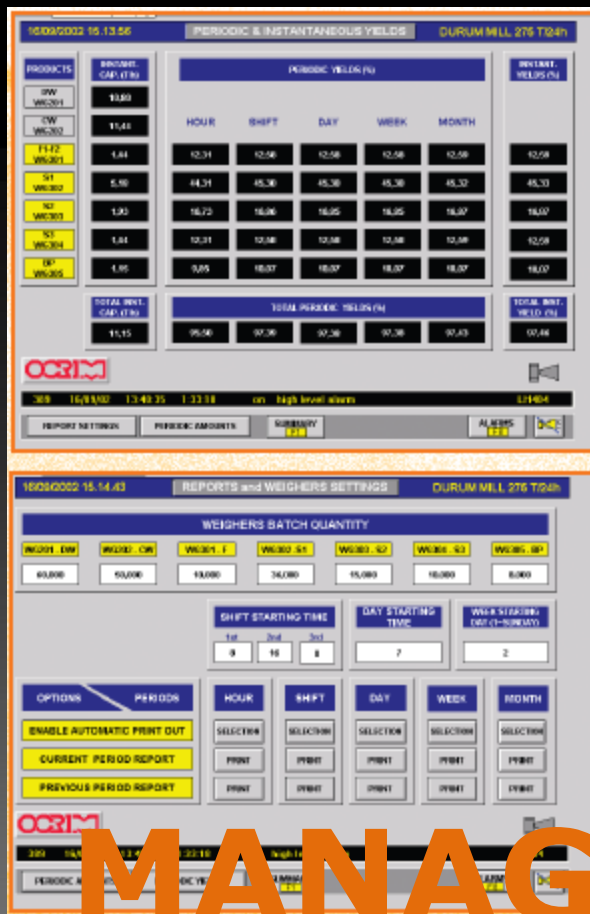
- For Each Machine @ Mill keeps under control :
 - Lifetime
 - Working Time
 - Allarms Log
- Online TELESERVICE SUPPORT directly from Ocrim's Technical Response Center
- A Maintenance Intervention Cost Less Then the Relevant Fault
- The Maintenance Intervention is a certain cost to prevent a possible fault



MANAGEMENT @ MILL

AUTOMATION AS AN OPPORTUNITY FOR:

- ALL PLANT INTEGRATION
- CENTRALIZED INFORMATION MANAGEMENT
- ON TIME DATA EXCHANGE
- ADDING VALUE TO PRODUCTS
- COST REDUCTION
- MAXIMUM FLEXIBILITY



MANAGEMENT @ MILL