

ACM MIDEAST & AFRICA DISTRICT 2007



Muscat

December 8 - 11, 2007

23/10/2007

Viviane Mpinga

www.fischbein.com

**« Latest developments
in Sewing machines to
close open mouth
bags»**

FISCHBEIN COMPANY

THE LEADER IN BAG CLOSING TECHNOLOGY

WORLD

SOLUTIONS FOR CLOSING ALL TYPES OF OPEN MOUTH BAGS

(Jute, burlap, cotton, paper, multi-wall paper, polyethylene, woven or non woven polypropylene, net bag, lined/coated papers and foils, laminates)



www.fischbein.com



1. General requirements for the bag closing section

- * Cost reduction
- * Reliability
- * Flexibility
- * Light daily maintenance
- * Easy integration into existing lines

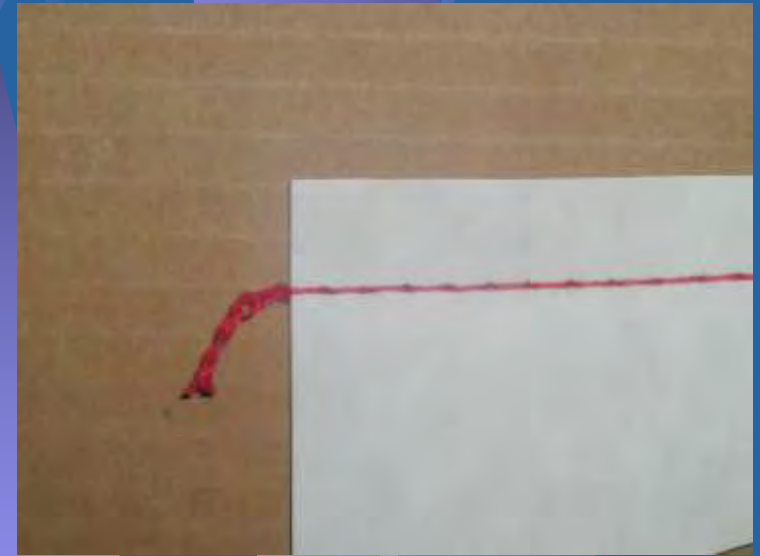
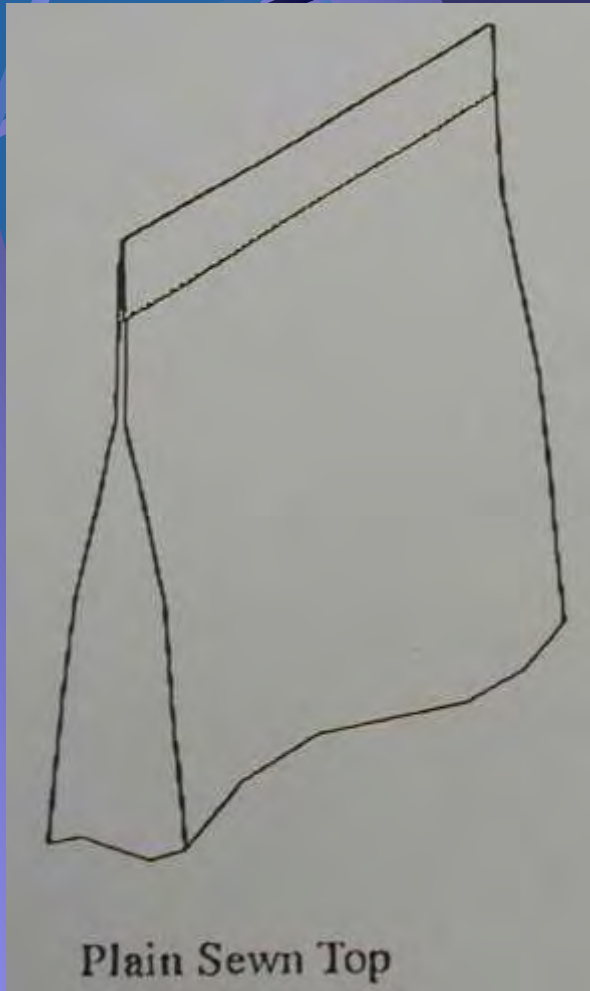
2. Expected performances for the bags and their closures

- *Evolution of bags
- *Mechanical performance
- *Aesthetical or cosmetic performance

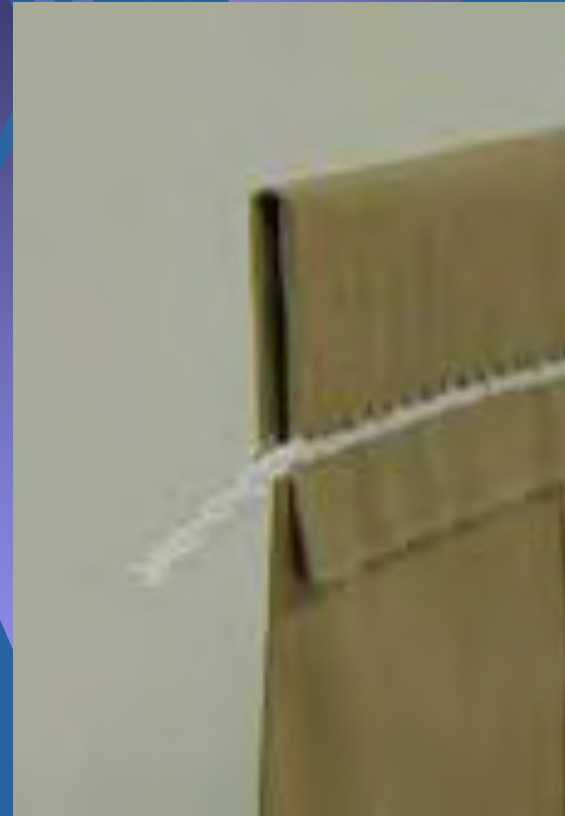
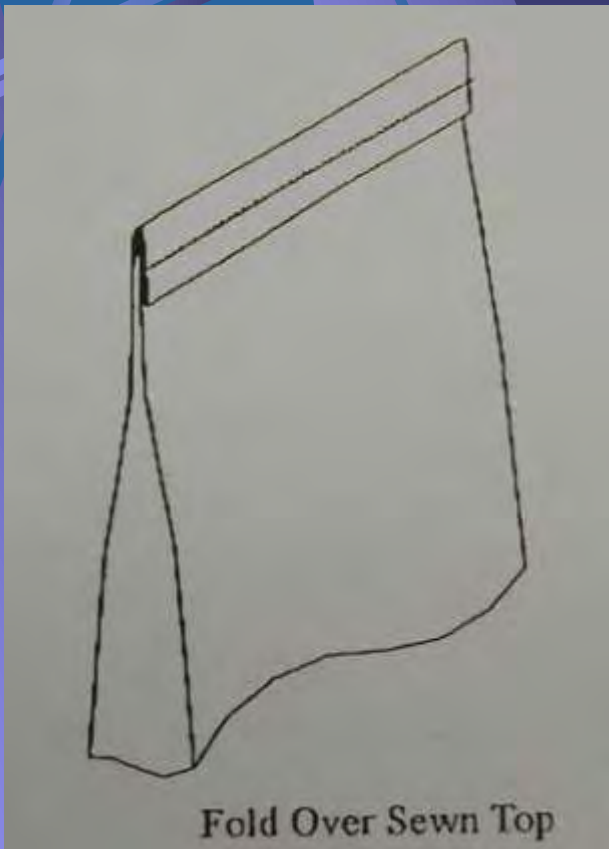
3. Solutions to close “open mouth” bags by sewing

- * Plain sewing
- * Sewing with folding
- * Sewing with crepe paper
- * Sewing with easy open tape
- * Tape over sewing

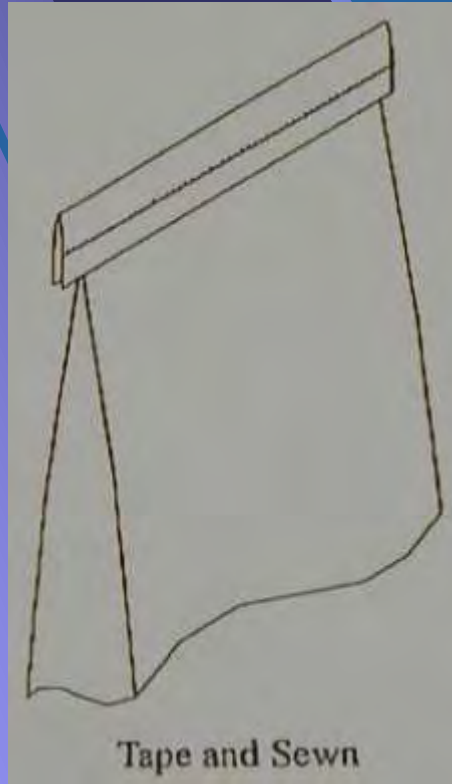
3. Sewing: plain sewing



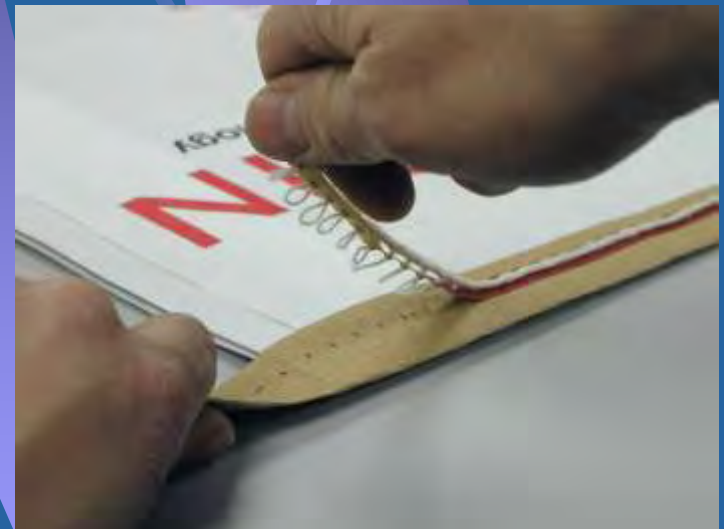
3. Sewing: sewing with folding



3. Sewing: tape sewing



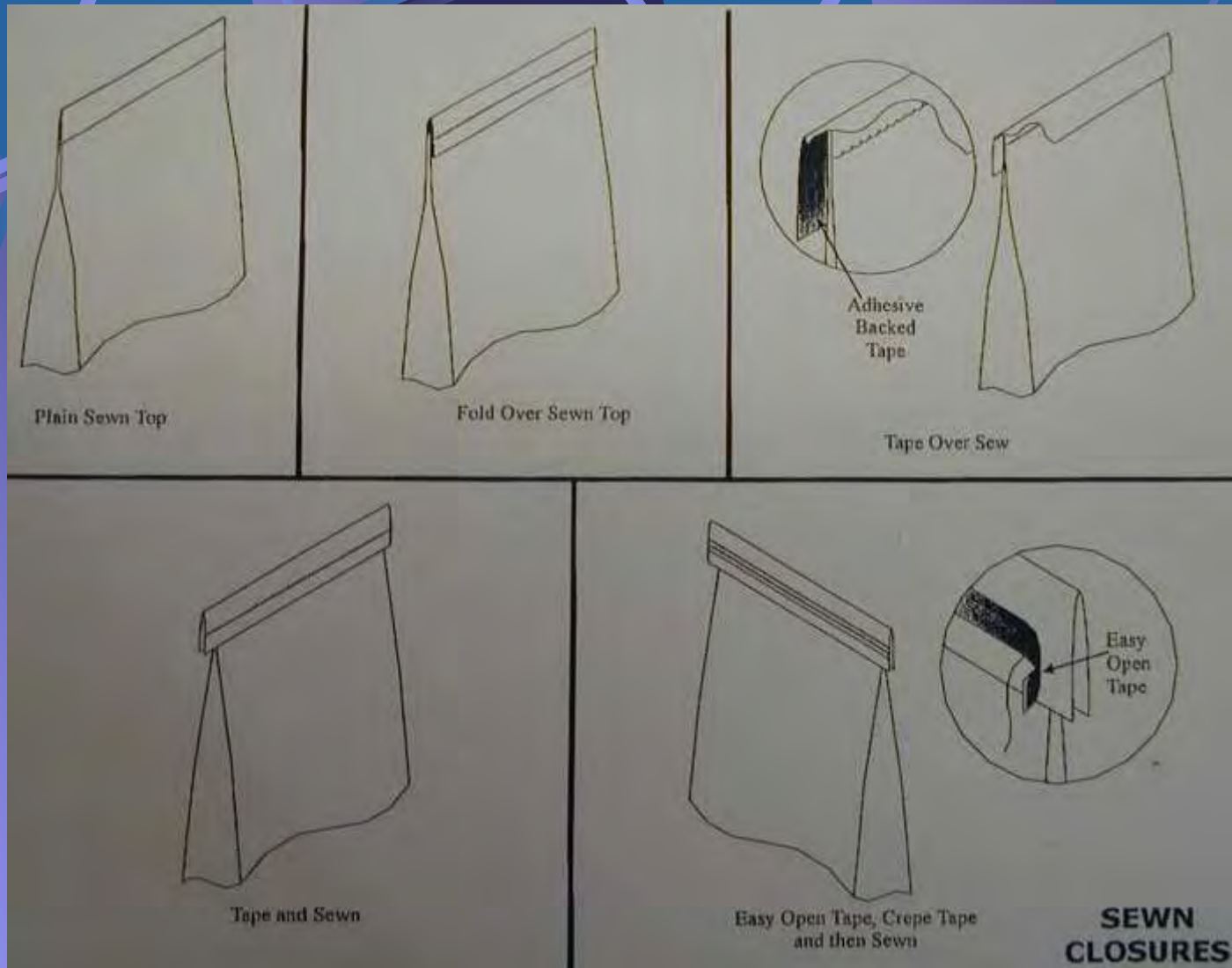
3. Sewing: tape sewing with easy open



3. Sewing: tape over sewing



3. Sewing



3. Sewing



3. Sewing: automatic sewing operations

The Key element = the Sewing Head



3. Sewing: automatic sewing operations

The Key element = the Sewing Head

- * Compact design
- * Low weight
- * Variable speed, adjustable by pulley
- * Completely sealed in oil
- * Easy adjustment of thread tension
- * Rotary knife

3. Sewing



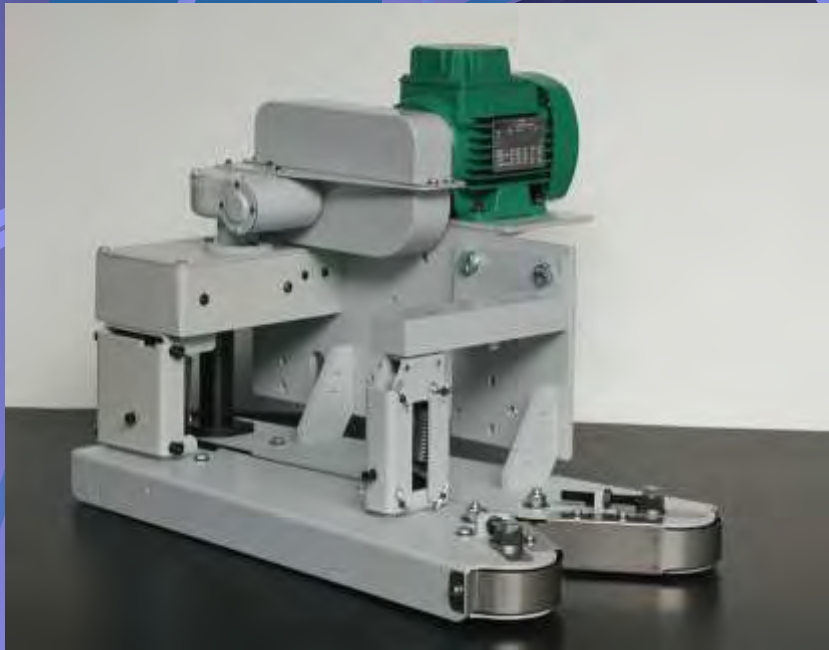
3. Sewing



3. Sewing



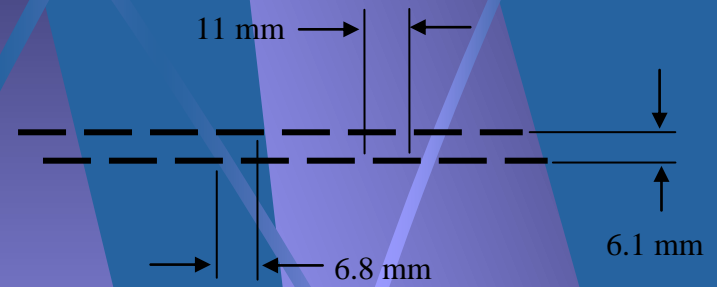
3. Sewing: infeeds



3. Sewing



3. Sewing: twin needle Sewing Head



3. Sewing: twin needle Sewing Head



3. Sewing: twin needle Sewing System



- * SOLUTIONS**
- * PRODUCT DEVELOPMENT**
- * WORLDWIDE SERVICE**
- * « JUST IN TIME » DELIVERIES**
- * QUALITY OF PRODUCTS**

*Thank you for your presence and
your attention!*