

Flour filling into woven PP valve bags with high-end rotary packers, type ROTOSEAL



Welcome to the world of
BEHN + BATES

Norbert Uthmann
BEHN + BATES, Muenster/GERMANY

IAOM Middle East & Africa District
Conference, Cape Town,
22-25 November 2010

BEHN + BATES headquarters in Münster/Germany



Company profile

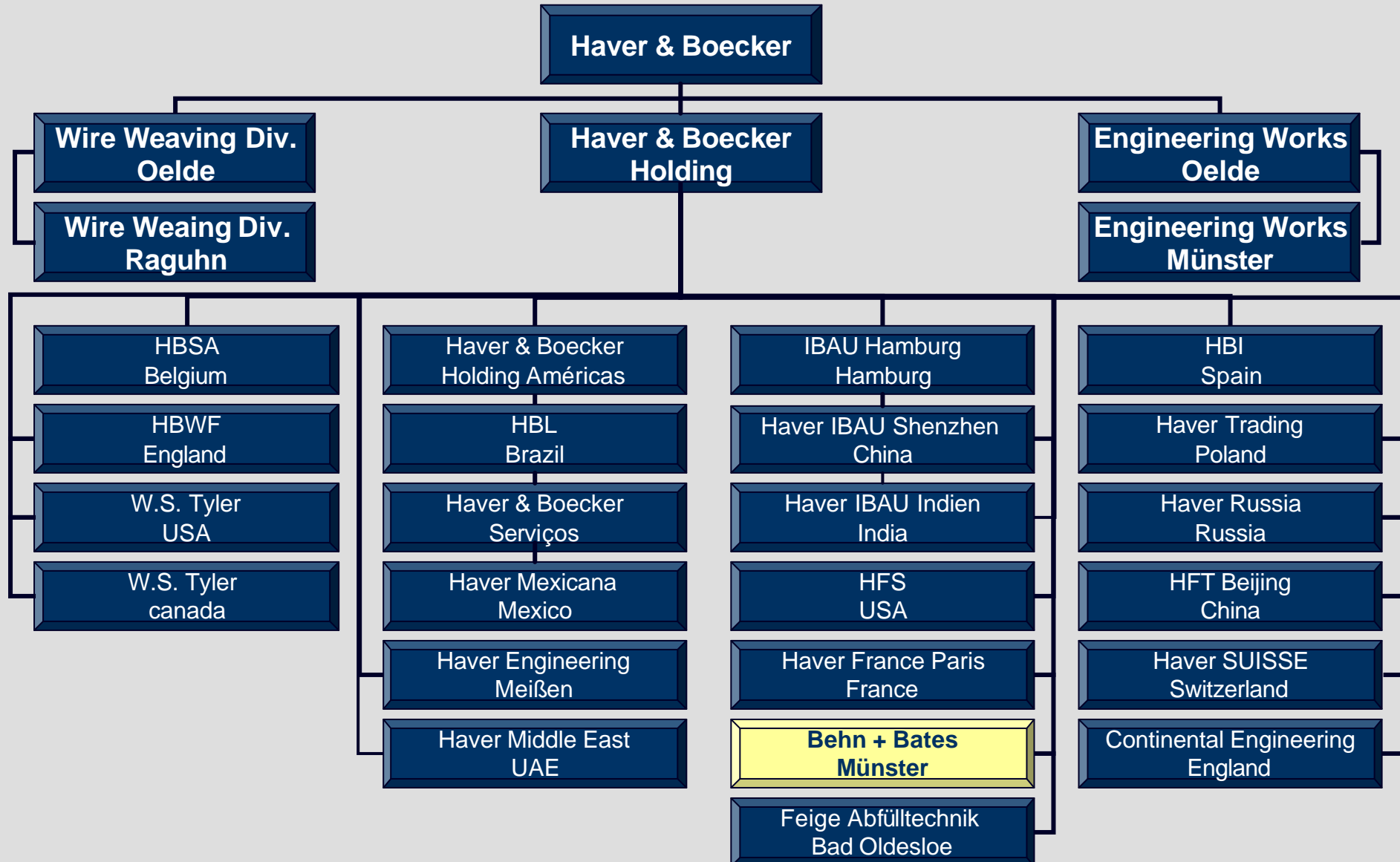
Company: BEHN + BATES Maschinenfabrik
GmbH & Co. KG

100% subsidiary of
HAVER & BOECKER Holding
with 2,000 employees around the globe

HAVER & BOECKER



Product range: Packaging and weighing technology
for filling **food and pet food** into valve
and open-mouth type bags





BEHN + BATES

Hygienic and efficient packing of food products into valve and open-mouth bags with filled weights of 1.5 up to 1,800 kg



Key industries

- Starch & derivatives
- Flour, Premixes
- Cocoa powder, cake
- Batter, Breadings
- Baking ingredients
- Sugar, sweeteners
- Soybean proteins
- Citric acid, pectin, yeast
- Flavours, herbs & tea



BEHN + BATES packaging solutions for flour filling into valve bags



Valve bag filling to perfection: High speed ROTO-Packers



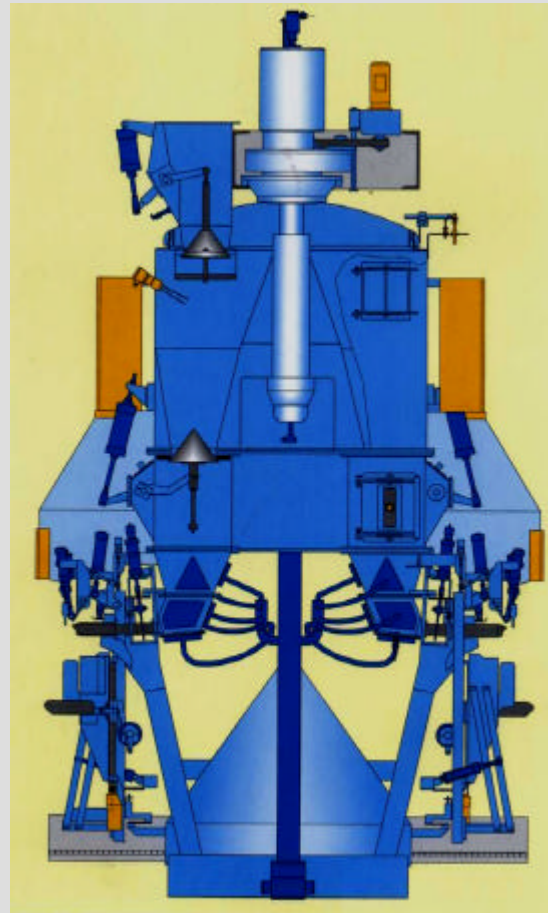
Versions with 3 – 12 filling spouts
Capacities: 600 to 2.000 bags/h

High speed ROTOSEAL installations

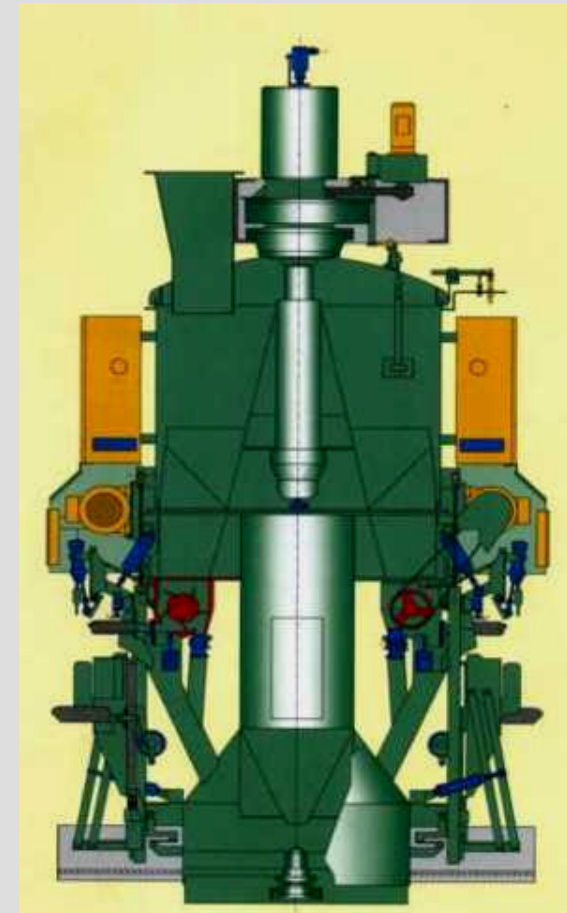


ROTO-Packers with integrated ultrasound sealing stations
for dust-tight seal of the bag valve directly after filling

**Your products
play the
decisive role
in choosing
the right and
most efficient
filling system.**



**ROTOSEAL System
air filling**



**ROTOSEAL System
impeller filling**

Why valve bags?

Right: Valve bags are often slightly higher in purchase price than open-mouth bags. - **But:** They have advantages that are difficult to top by open-mouth bags:

- Appealing - compact - easy to palletize
- Hermetically tight due to ultrasound valve sealing
- Cost-saving due to unnecessary error-prone sewing machines
- High packaging outputs with just 1 machine
- Optimum investment planning due to expandable machine designs that grow with the packaging needs
- No re-use of used bags: It is for sure that your bags include your quality products.

Your benefits are our objectives

Maximisation of your profit due to the optimum combination of high functionality and efficiency with our clear and space-saving machine design:

- Clean and weight-accurate product processing with a minimum of spillage
- High-quality and high-output packaging due to the high level of automation
- Perfect cleanliness of the packing area due to dust-free filling and minimum spillage

Your results

- Clean and compact bags with high advertising impact convincing your customers: Only optimally filled bags can be processed efficiently!
- Reduced cost due a clean packing environment, reduced clean work and less maintenance
- Lower investment costs due to the need of only 1 product feed, 1 bag feed and 1 discharge line
- Graduated investment costs due to expandable machine designs



Your full pallet storage could look like this



Some ROTO-Packer details

Empty Bag Application

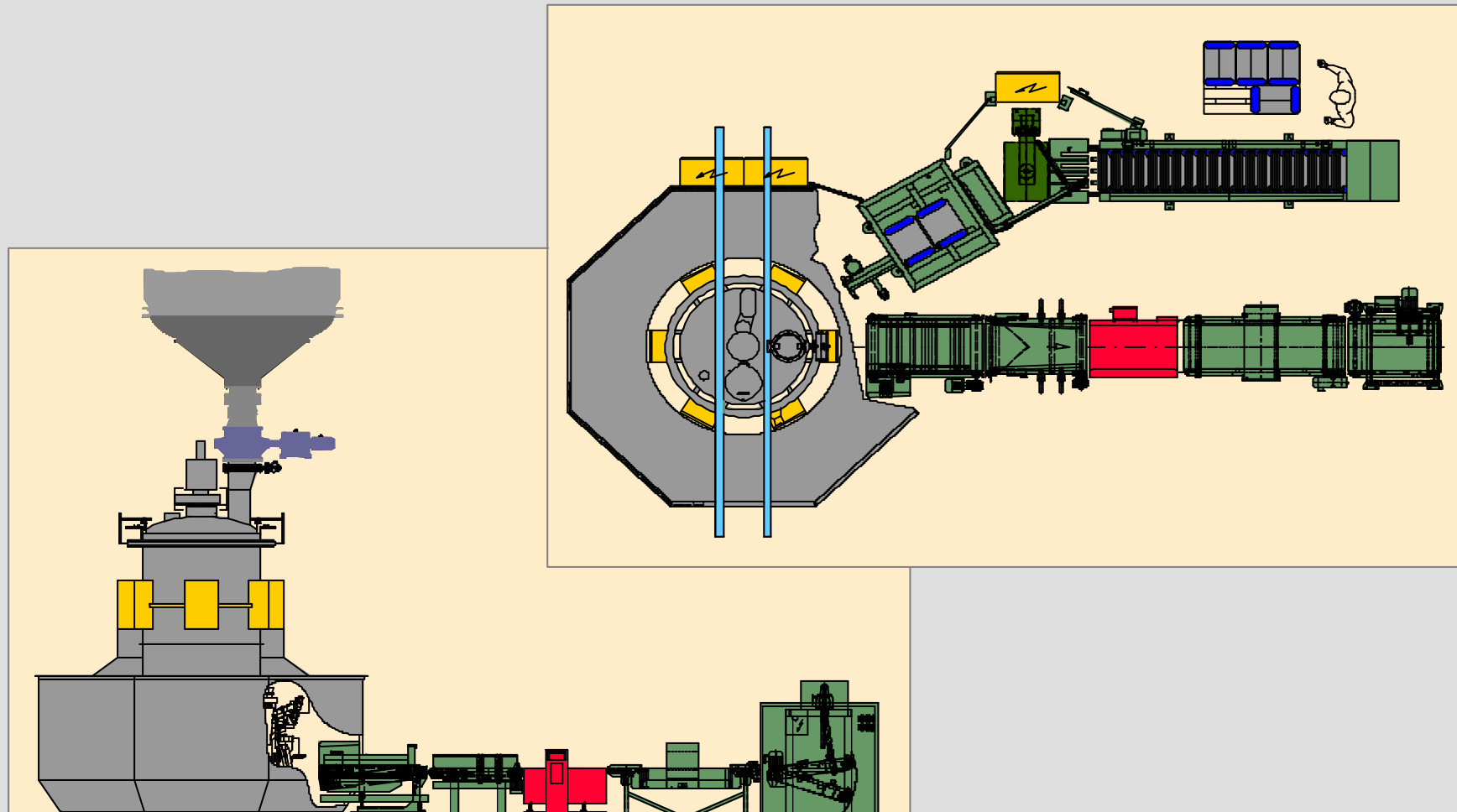


Your decision: Manual or automatic bag application.
Our solutions are designed to meet your needs.

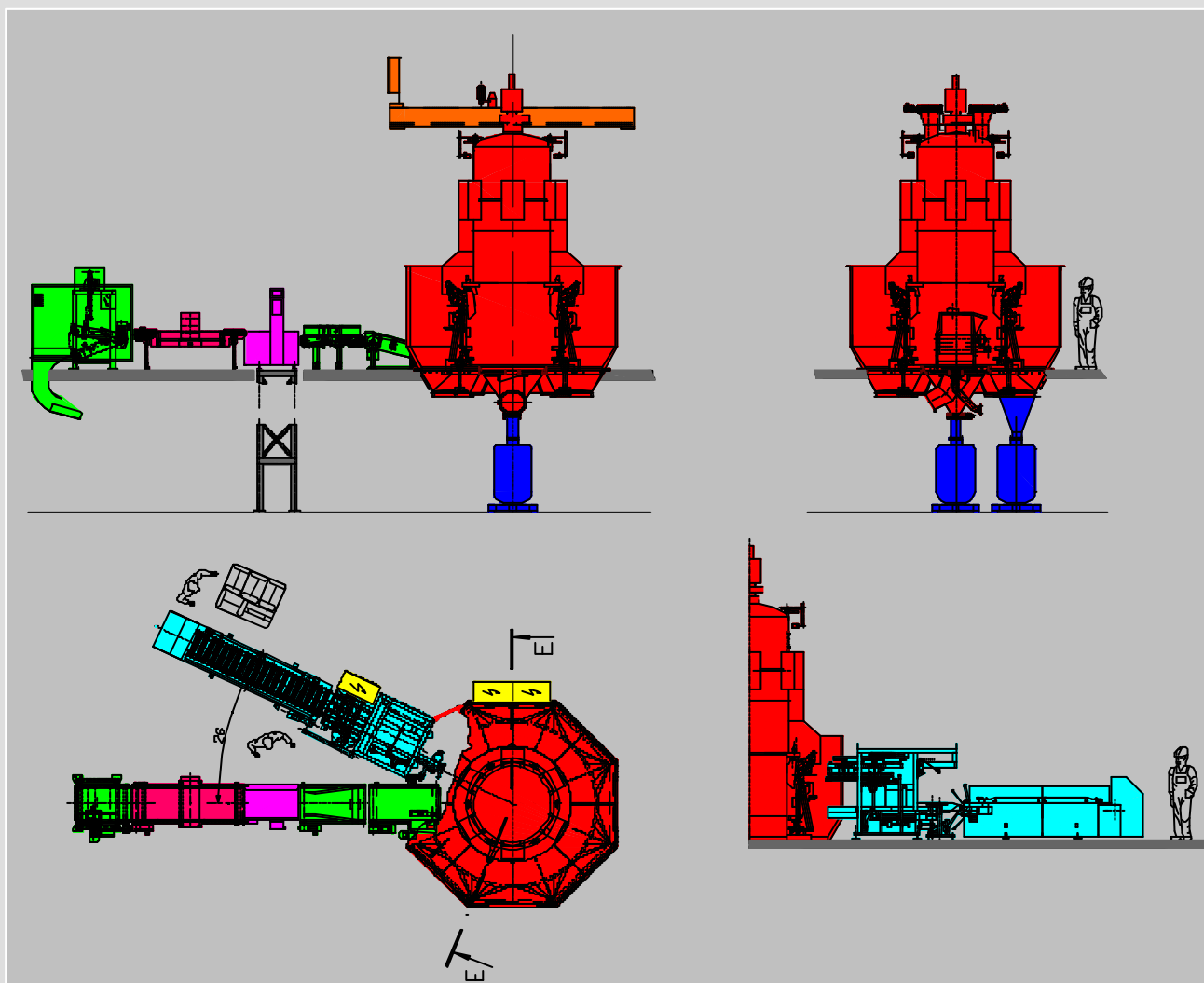
Bag filling and full bag discharge

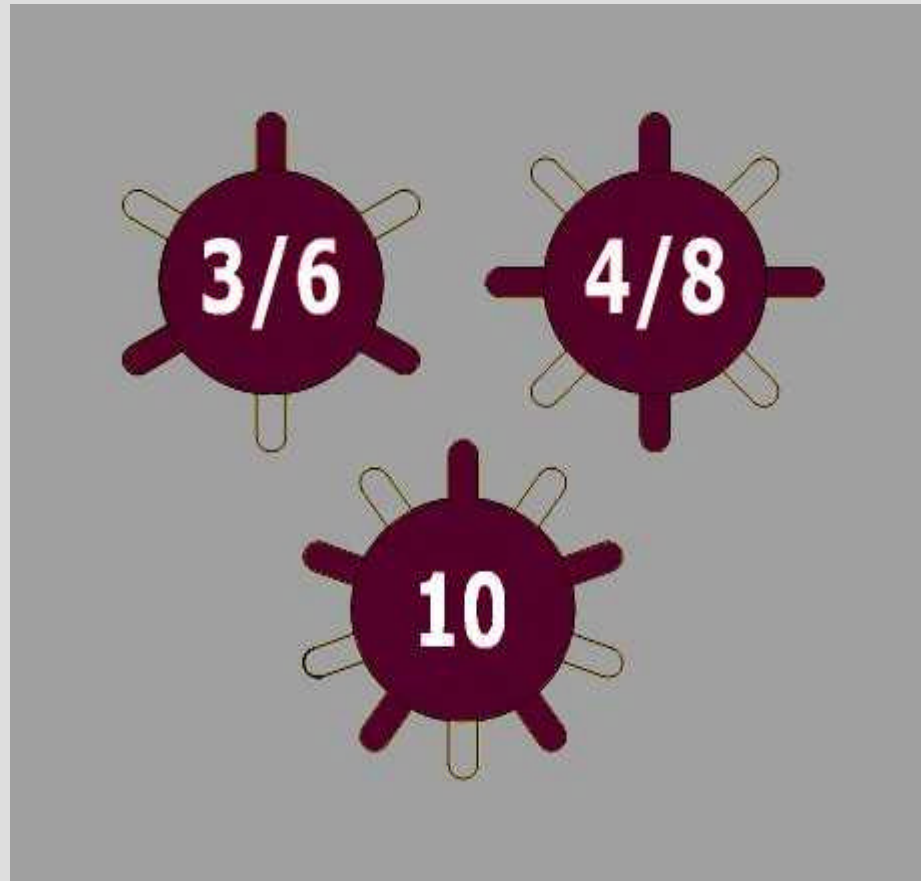


Standard design of a ROTO-Packer installation



ROTO-Packer installation





ROTO-PACKER with 3 to 10 spouts

expandable systems
from

3 to (6),
4 to (6), 4 to (8)
6 to (8) or 5 to (10)
spouts respectively

Flour bags filled by BEHN + BATES

Weights: 2.5, 5, 12.5 / 25 and 50 kg



Are you interested in our packaging technology?
Please come to see us at our
BOOTH NO. C 12
to know more about us.

Thank you for your attention.

Norbert Uthmann
BEHN + BATES
Robert-Bosch-Str. 6
48153 Münster/Germany
☎ +49 251 9796-254

✉ n.uthmann@behn Bates.com