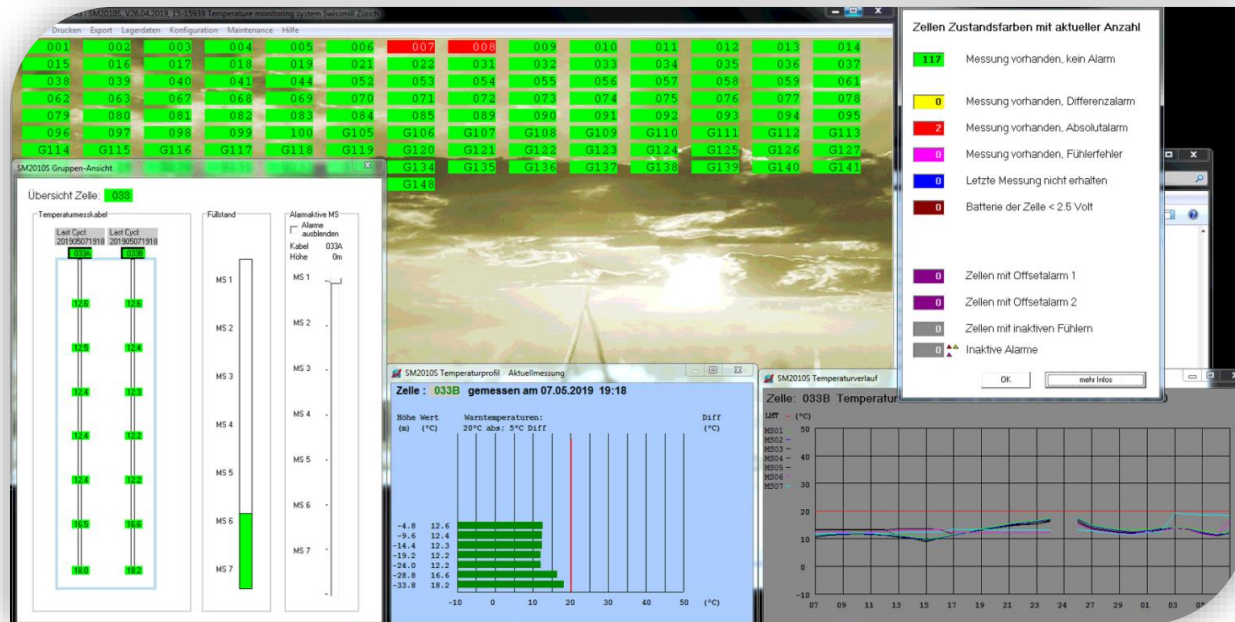




Agromatic



SM2010S: The temperature monitoring software

New features

content



new features of SM2010S silo manager software

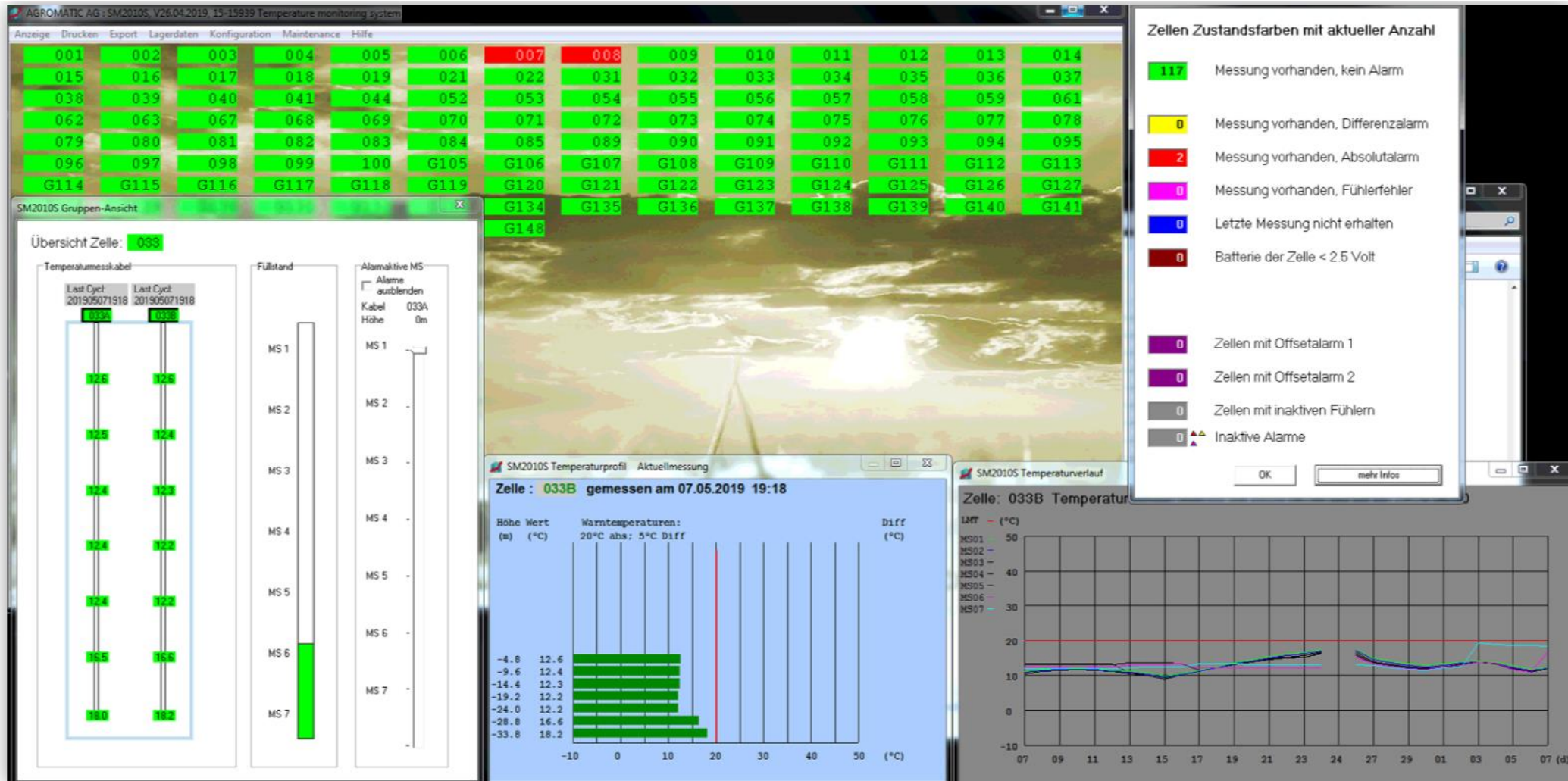
Major changes

- improved alarm status view
- group view
- disable air temperature alarms
- level sensing

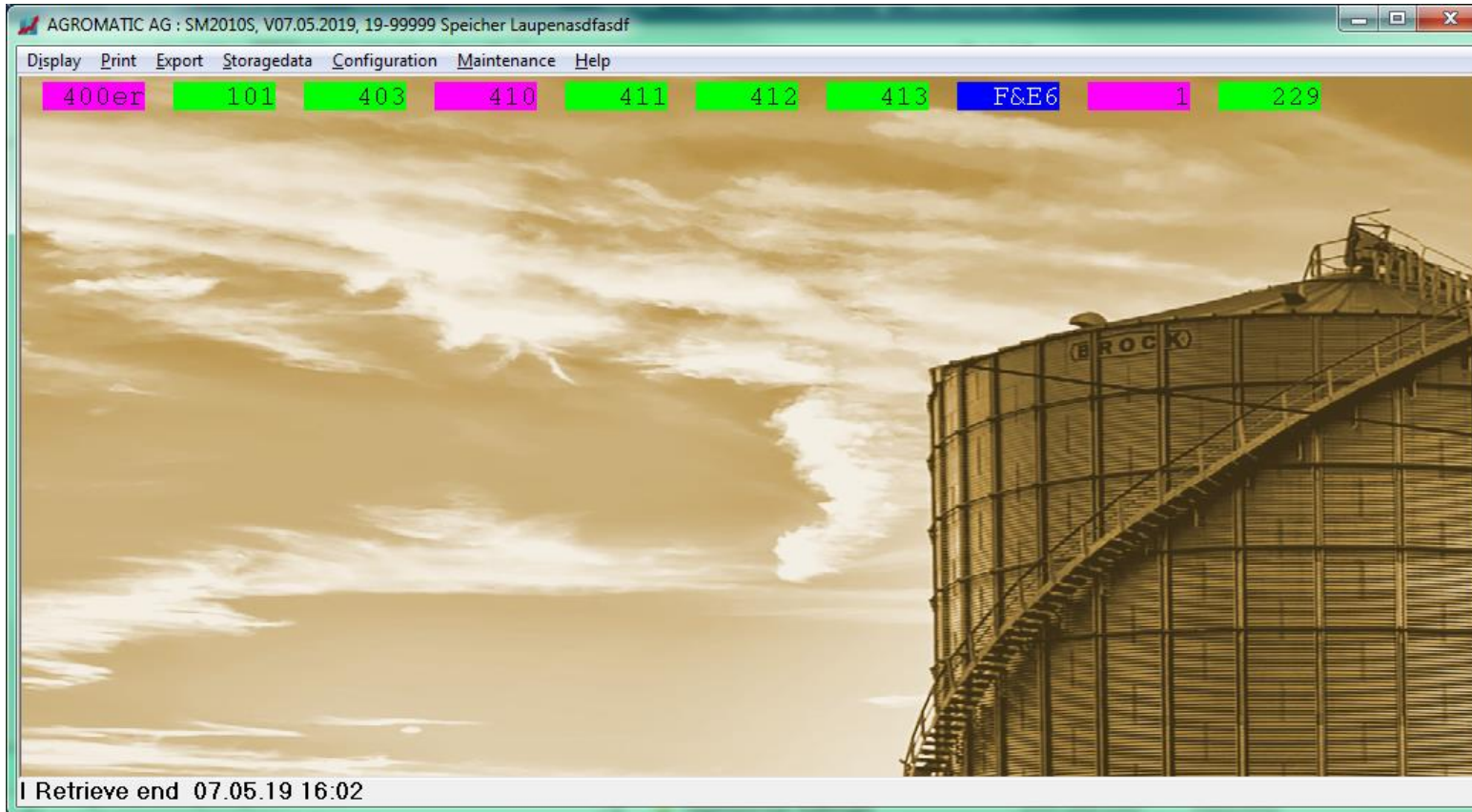
Minor changes

- export functions
- external alarms

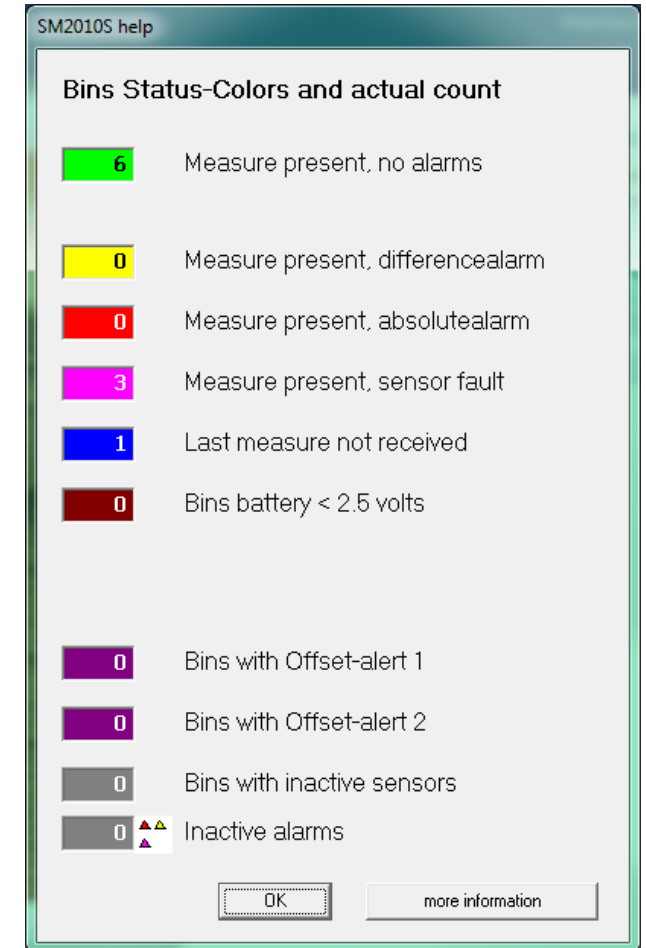
General view of the main window



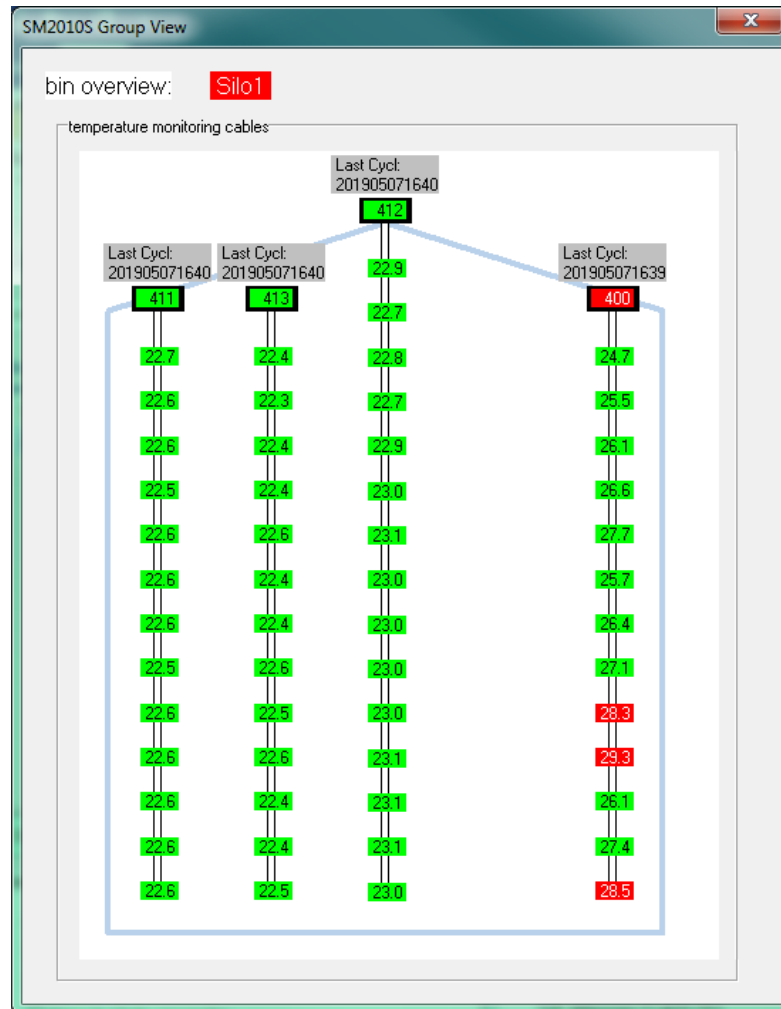
Improved alarm status view



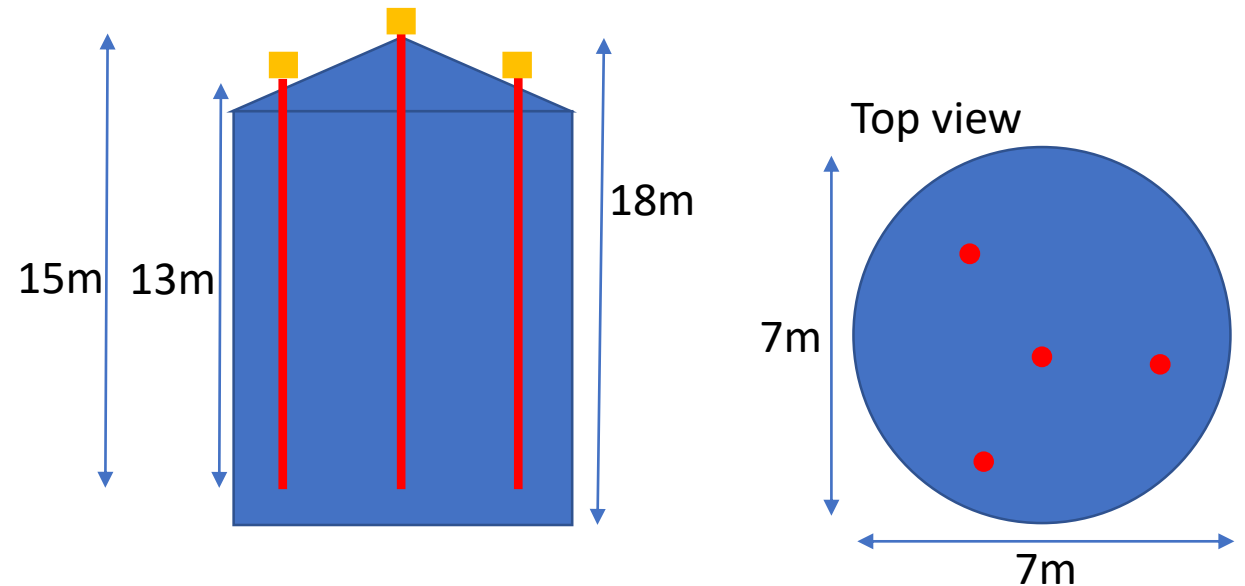
Bin label is highlighted with the highest priority alarm color



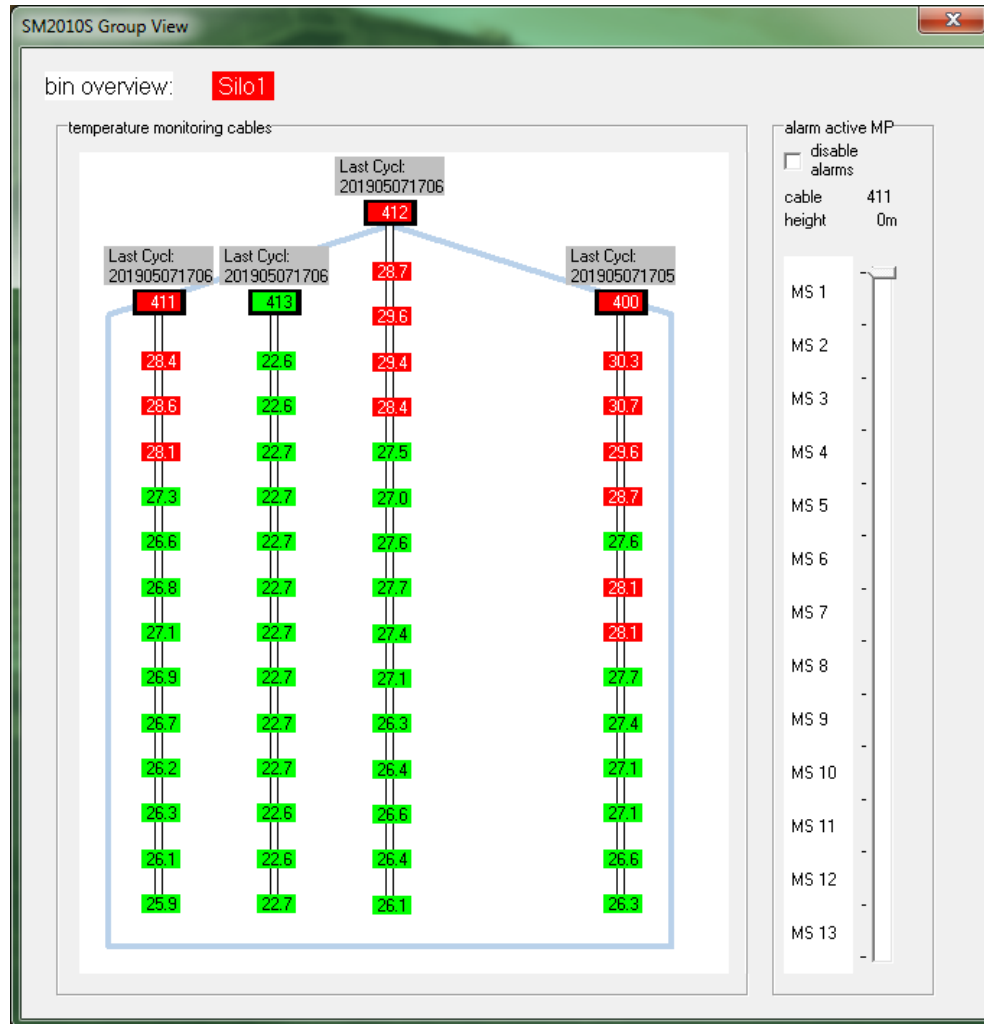
Group view – steel silo



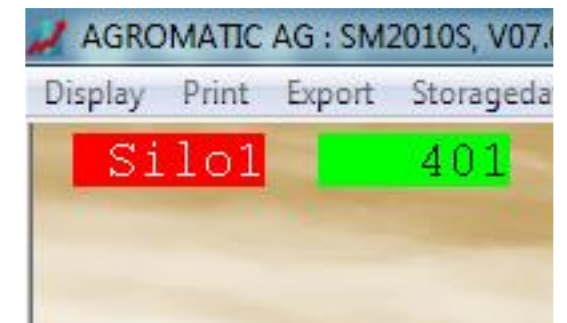
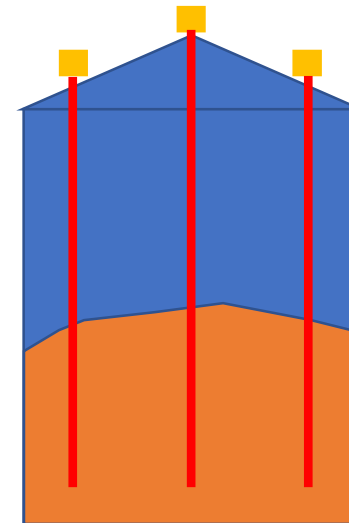
Application with round steel silo
1 cable with 15 measuring point
3 cables with 13 measuring points
3 mp's with absolute alarm



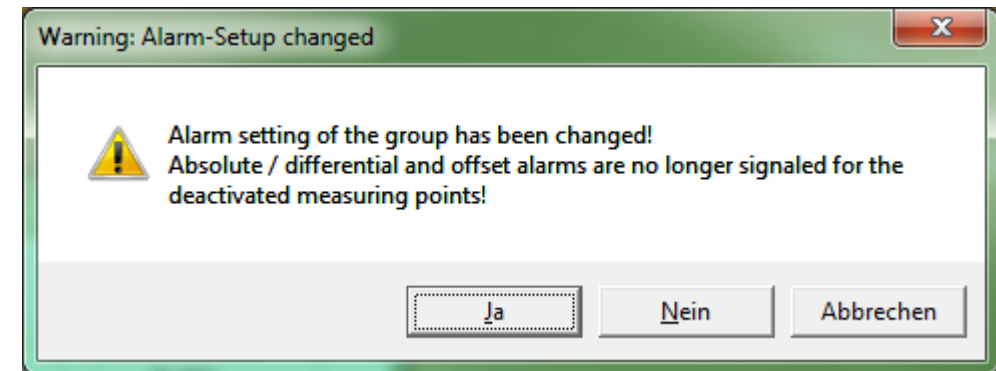
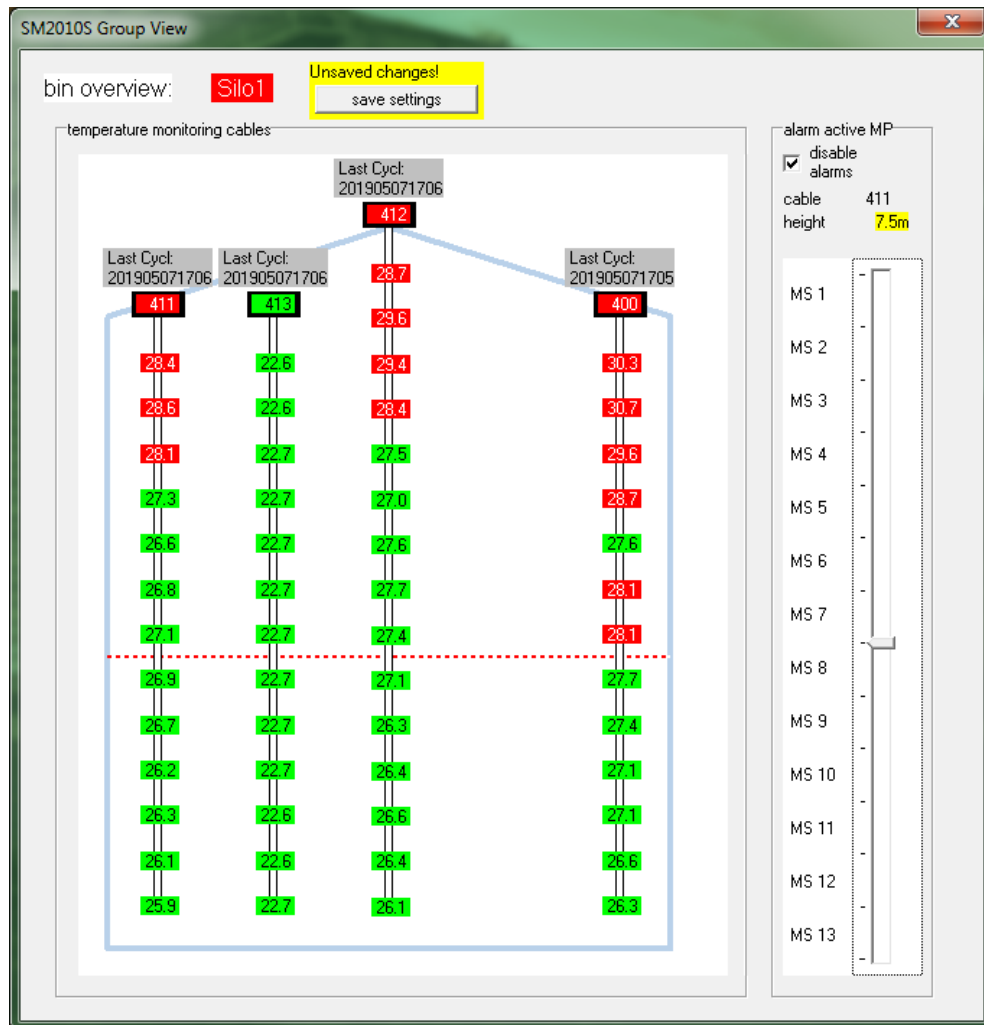
Disable air temperature alarms



Half-full bin with alarms caused by air temperatures, exceeding the alarm limit throughout the day.

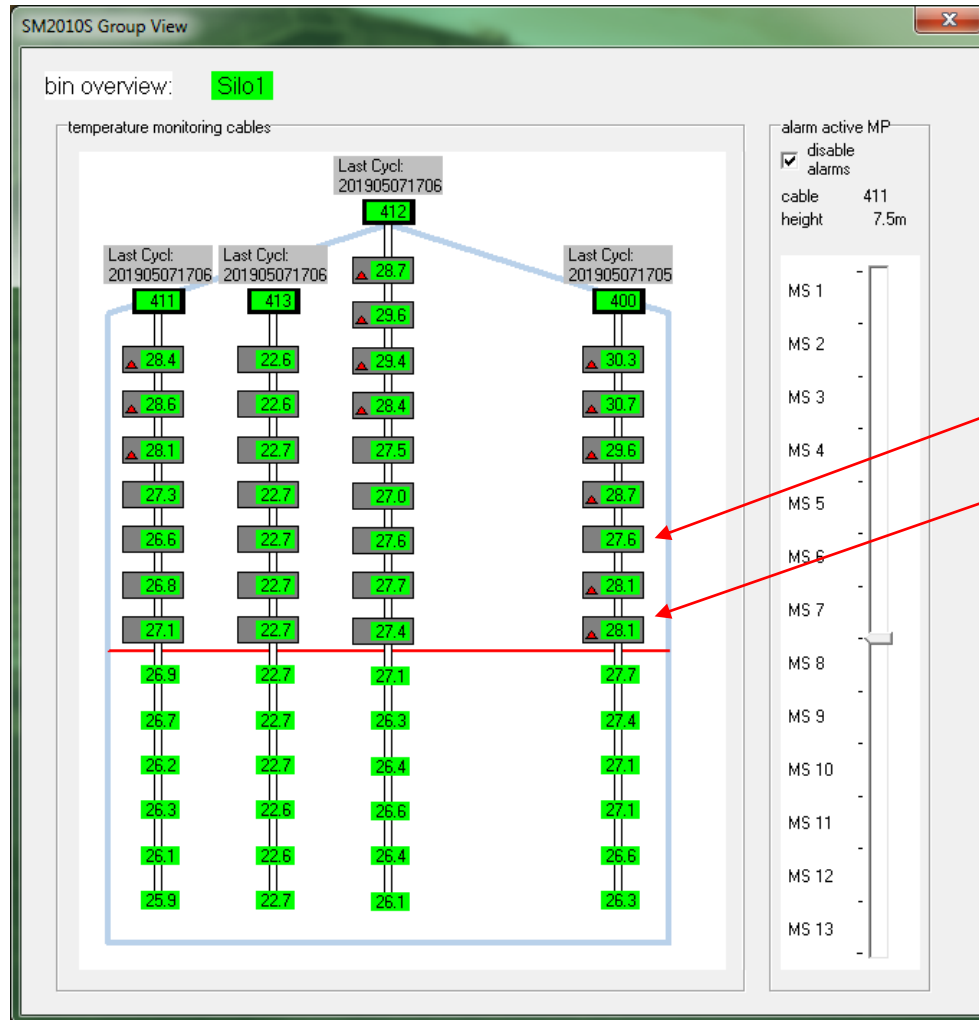


Disable air temperature alarms



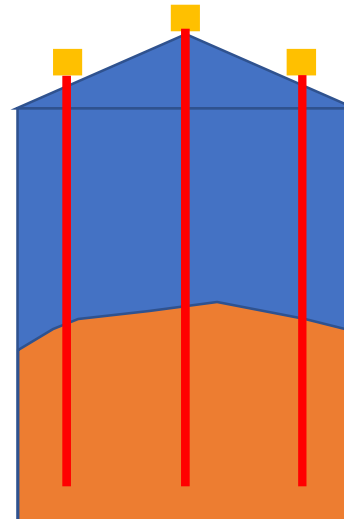
Alarms caused by air temperature can be hidden. Silo manager warns the user, that he deactivates signaling of the alarms over the selected height.

Disable air temperature alarms

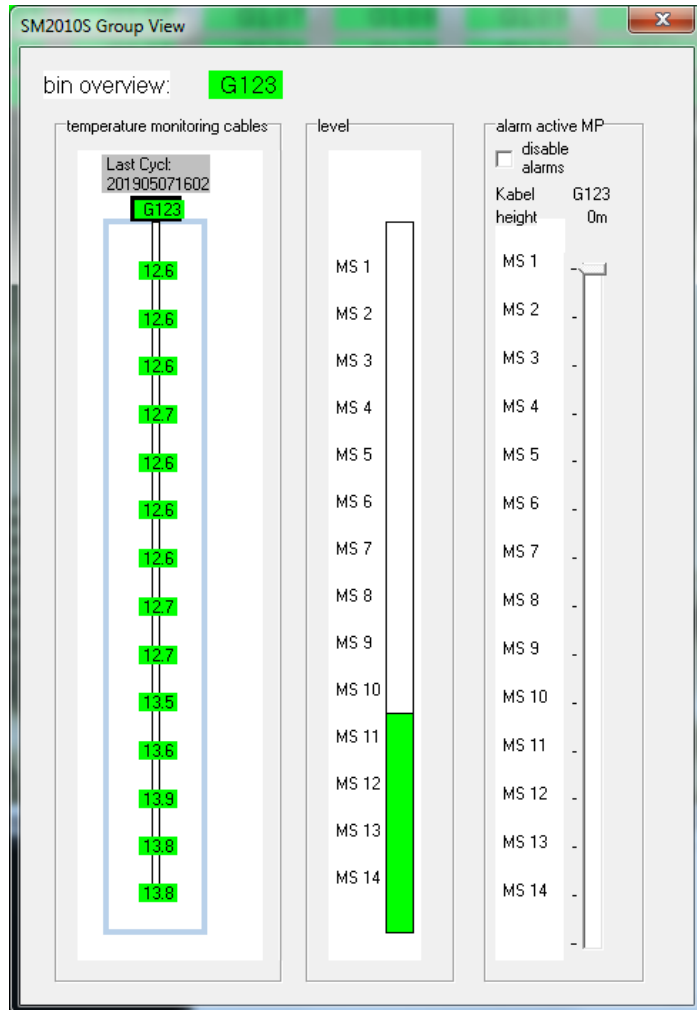


Disabled alarm view: exceeded limit still visible, but not set as an alarm to the alarm module. No alarm on alarm indication lamp or external plc

- Disabled measuring point with uncritical value
- ▲ Disabled measuring point with exceeded absolute limit



Level sensing



New feature for level sensing, based on temperature fluctuations.

Algorithmus to calculate silo level out of deviations.

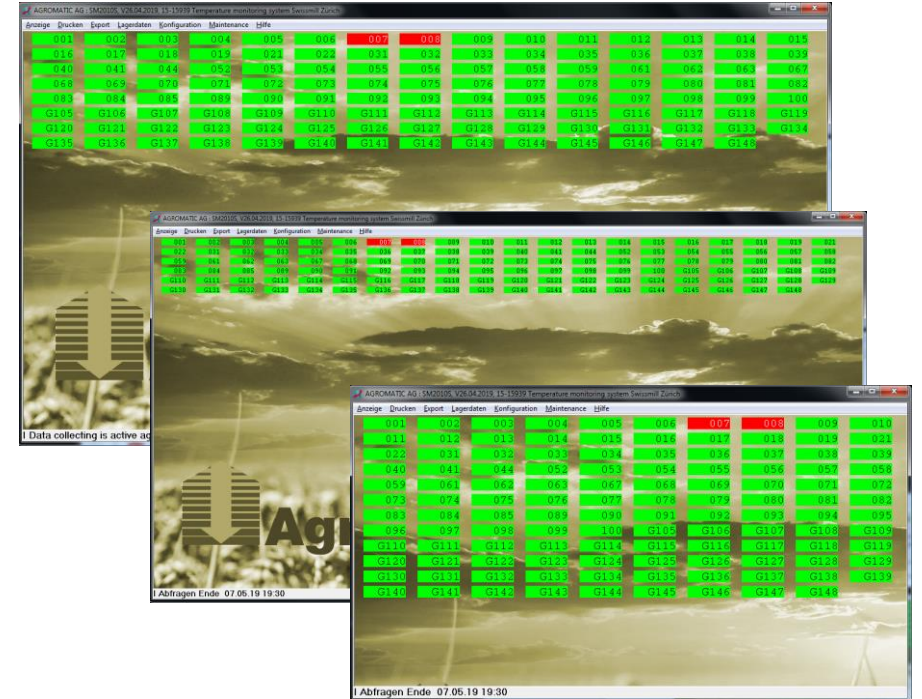
Minor changes



Export functions



External alarm interface



Adjustable main window