

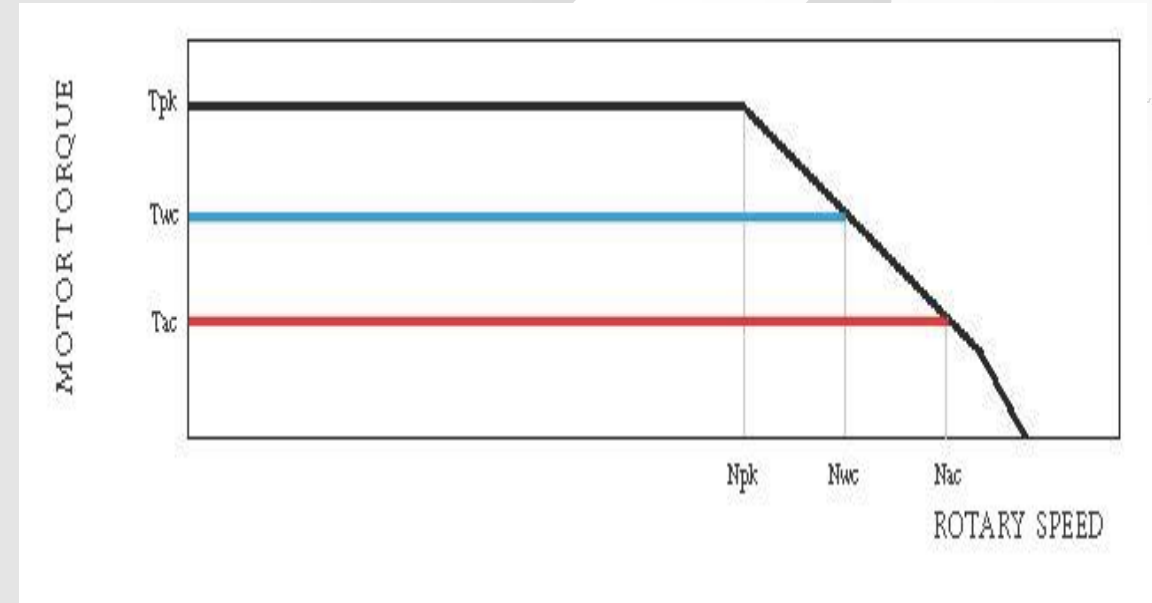
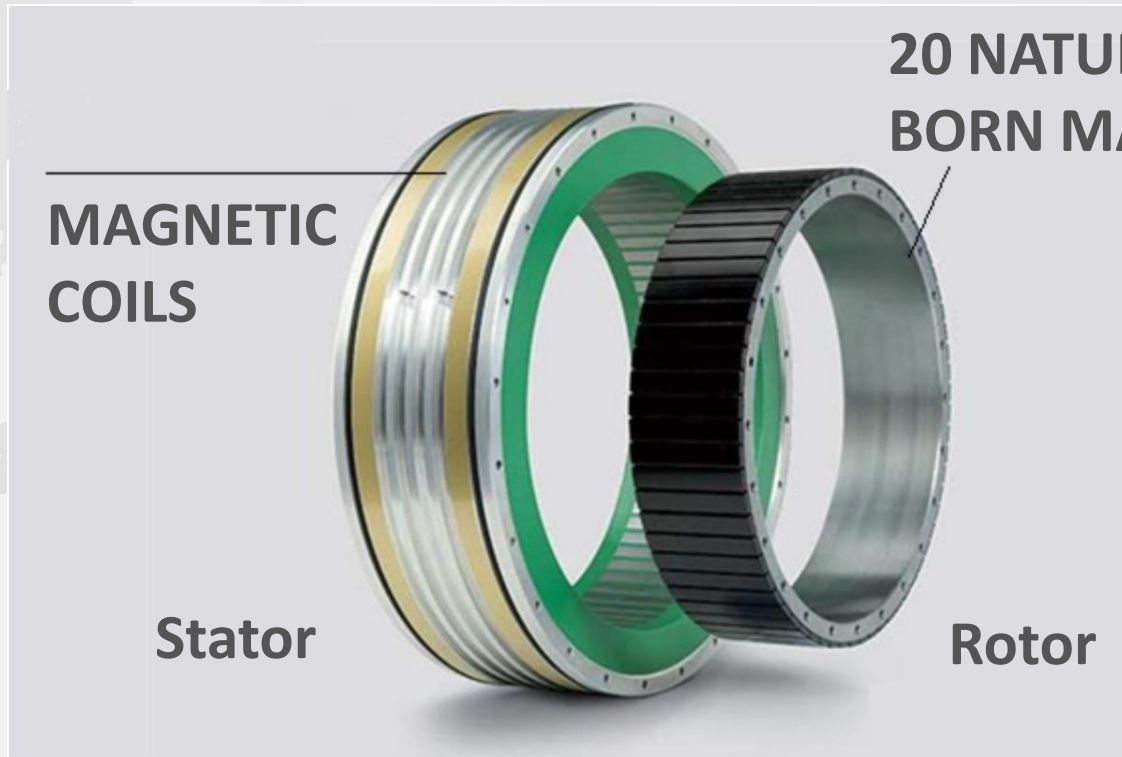
MILLING REVOLUTION



LEONARDO: DIRECT POWER DRIVE ON EACH ROLL

PERMANENT MAGNETS MOTOR

POWER DIAGRAMM



LEONARDO: ROLLS SPEED FROM 100-600 R.P.M.



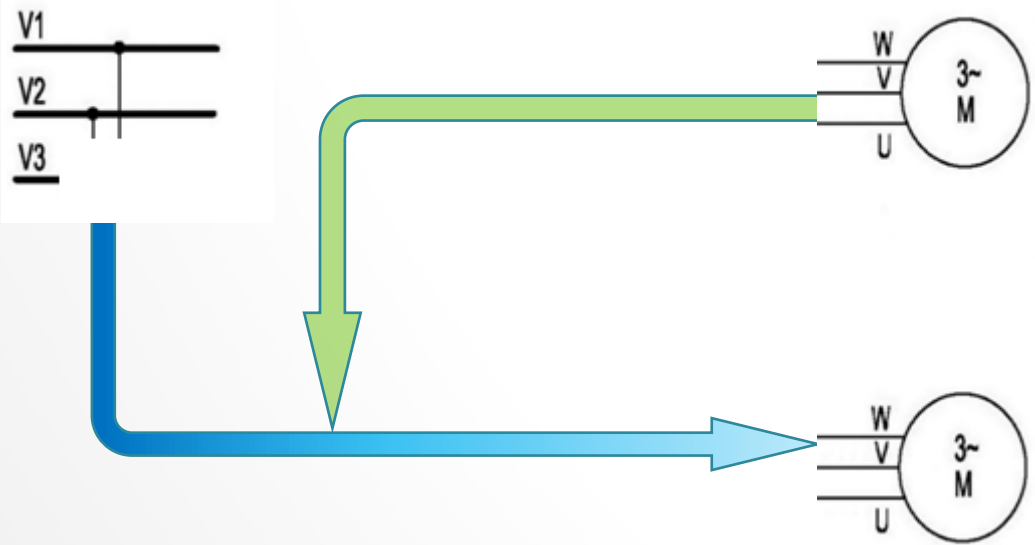
**0,5% MORE YIELD
FLOUR RECIPIES
OPTIMUM SETTING**



KERS THE INTERNATIONAL PATENT



ELECTRIC ENERGY REGENERATION



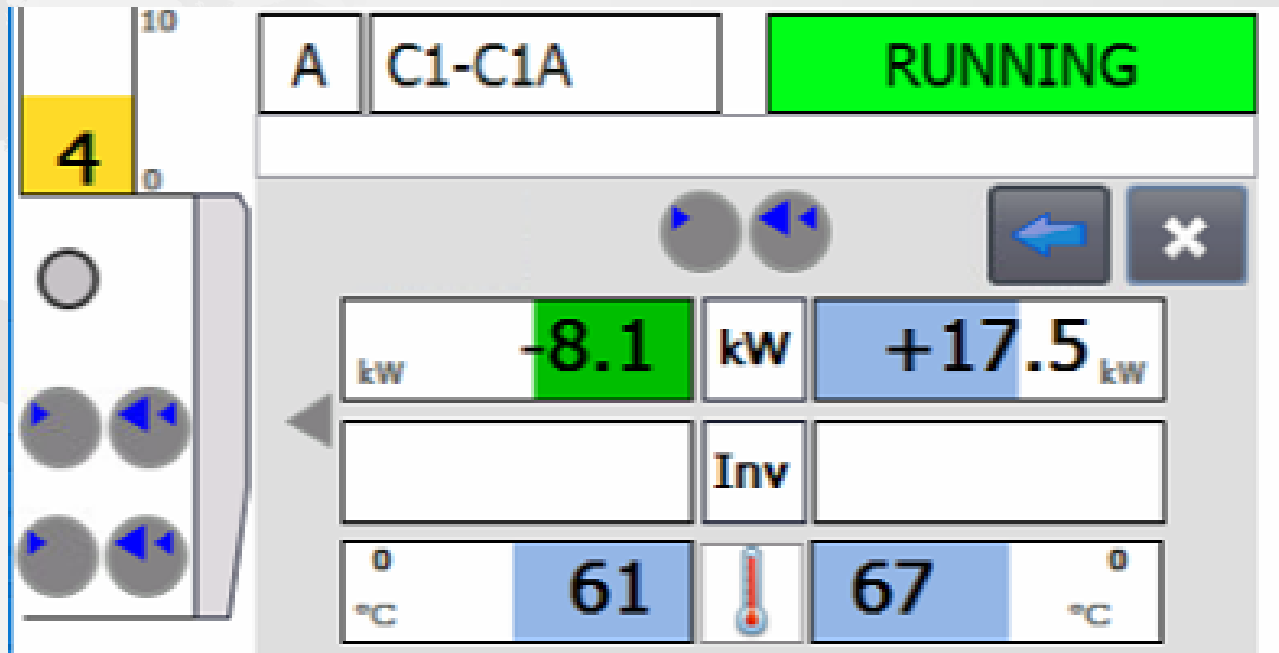
SLOW ROLL

FAST ROLL

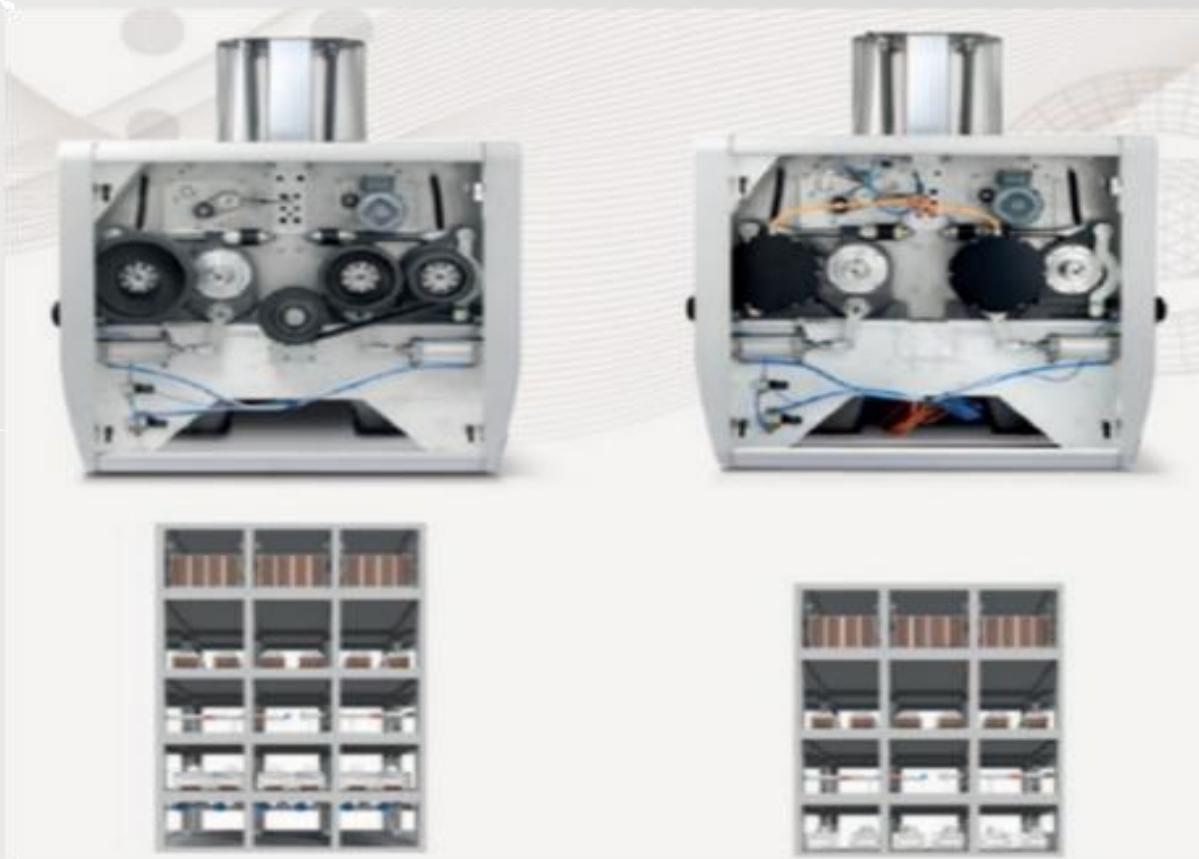
LEONARDO: POWER SAVING PER TON WHEAT

C1 MILLING PASSAGE ENERGY RECOVERY 45 %

MINIMUM SAVING



BUILDING COST SAVING 25 %



omas
RESEARCH &
DEVELOPMENT
MADE IN ITALY

omas
ITALIAN EXCELLENCE



1 – TRADITIONAL
2 – BUILDING ECONOMY
- 15% – ERECTION COST and SHUTDOWN TIME







omas
RESEARCH &
DEVELOPMENT
MADE IN ITALY



ITALIAN EXCELLENCE



LEONARDO VS CONVENTIONAL



THE SAVINGS

(KENIA 3000 TPD FLOUR DECEMBER 2018)

**C1 Passage 2 x 1000mm
FEEDING PRODUCTS
2640 kg/H
very fine semolina**



FLOUR 1494 Kg/H 56,6 % + 2,9%

41 Ampere - 24%

20 kW/H - 28%

20 KVA - 44 %



FLOUR 1452 Kg/H 55 %

51 Ampere

27,9 kW/H

35,7 KVA



ITALIAN EXCELLENCE

THE MILLING REVOLUTION HAS BEGAN AND NOTHING WILL BE THE SAME AGAIN



ITALIAN EXCELLENCE

REFERENCES





MILLING REVOLUTION

